

Hamlyn Road

Glastonbury, BA6 8HT

COOPER
AND
TANNER



£650,000 Freehold

4 2 2 EPC C

Description

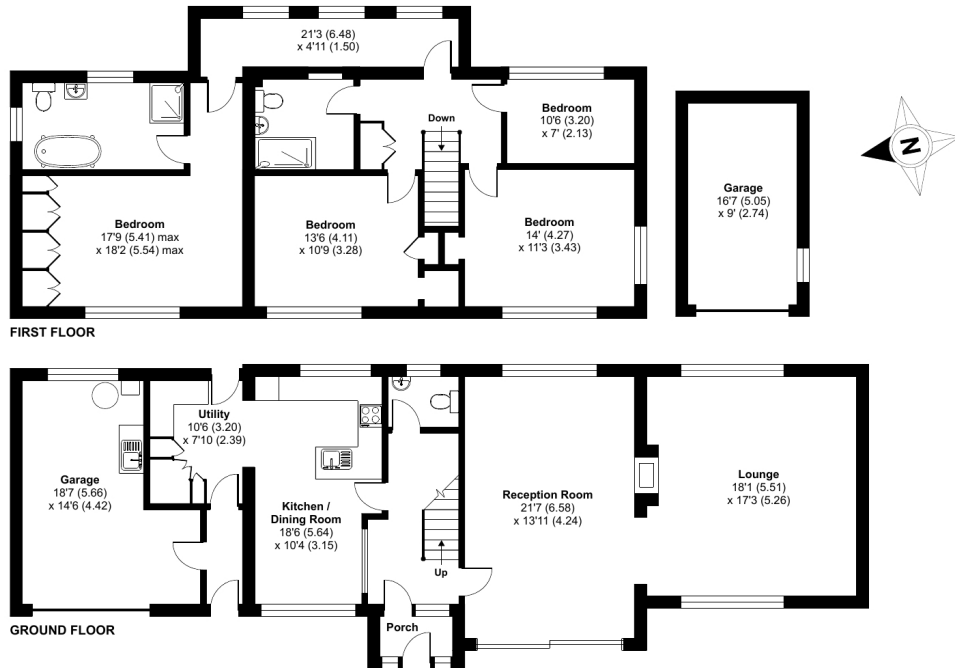
The accommodation has been presented to the highest standard and enjoys a contemporary feel throughout. The ground floor is dominated by two substantial receptions rooms, each room is separated by a wood burning stove and enjoys far reaching views towards Glastonbury and the countryside beyond. Sliding doors from the lounge lead out onto raised sun terrace providing a blend indoor and outdoor living and entertaining during the summer months.



Firbank, Hamlyn Road, Glastonbury, BA6

Approximate Area = 2550 sq ft / 236.8 sq m (includes garages)

For identification only - Not to scale



Floor plan produced in accordance with RICS Property Measurement 2nd Edition, incorporating International Property Measurement Standards (IPMS2 Residential). © nichecom 2025. Produced for Cooper and Tanner. REF: 1273317



Features

- Renovated throughout with a contemporary finish
- Council Tax Band F - Freehold
- Two substantial reception rooms with central wood burner
- Garage and separate workshop
- Stunning south westerly views from the majority rooms
- Extensive plot enjoying good amounts of privacy
- Walking distance of Glastonbury Town Centre

Local Information

- Council Tax Band F
- Tenure Freehold
- EPC Rating C

GLASTONBURY OFFICE

Telephone 01458 831077

41, High Street, Glastonbury, Somerset BA6 9DS

glastonbury@cooperandtanner.co.uk

**COOPER
AND
TANNER**

Important Notice: These particulars are set out as a general outline only for the guidance of intended purchasers and do not constitute, nor constitute part of, an offer or contract. All descriptions, dimensions, reference to condition and necessary permissions for use and occupation, warranties and other details are given without responsibility and any intending purchasers should not rely on the same as statements or representations of fact but must satisfy themselves by inspection or otherwise as to the correctness of each of them.

