



2 The Hythe, STAINES- UPON-THAMES, TW18 3JF

WELL PRESENTED AND SPACIOUS TWO BEDROOM RIVERSIDE COTTAGE LOCATED WITHIN MOMENTS OF STAINES TOWN CENTRE ALONG MUCH SOUGHT AFTER ROAD. The property benefits from a spacious lounge/diner, separate fitted kitchen/breakfast room, two double bedrooms, private riverside balcony, modern bathroom suite and secluded rear garden. No Onward Chain. Viewings Highly Recommended!

ROOM DESCRIPTIONS

Covered Porch

With front door leading to Kitchen lobby.

Lounge/Diner



Double glazed French doors leading to patio, light and power points, TV point, brick-built fireplace.

Kitchen/Breakfast Room



Front aspect double glazed window, range of fitted units at eye and base level, single drainer sink unit with mixer tap, space for washing machine, tumble dryer, cooker and fridge/freezer. Partly tiled walls, light and power points, open plan to Breakfast room, understairs storage cupboard, stairs to first floor and door leading to Lounge/diner.

First Floor

Landing

Light point, access to loft space, built-in storage cupboard, rear aspect window and doors to:

Bedroom 1



Rear aspect glazed doors leading to balcony, light and power points, cast-iron feature fireplace, built-in wardrobes.

Bedroom 2

Front aspect leaded light window, light and power points, built-in storage cupboard, cast-iron feature fireplace.

ROOM DESCRIPTIONS

Bathroom



Rear aspect window, panel enclosed bath, separate shower, wash hand basin inset to cabinet, heated towel rail, partly tiled walls, light point.

Separate W.C.

Low level W.C, skylight window, light point.

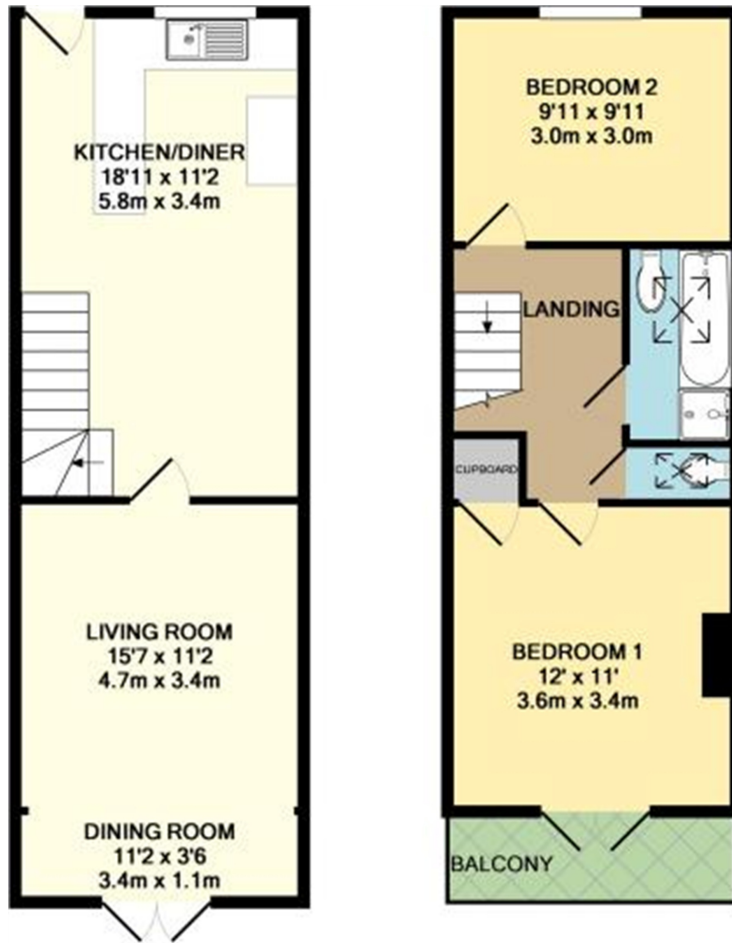
OUTSIDE

Rear Garden



Enclosed patio garden overlooking River.

FLOORPLAN



GROUND FLOOR
APPROX. FLOOR
AREA 387 SQ.FT.
(35.9 SQ.M.)

1ST FLOOR
APPROX. FLOOR
AREA 343 SQ.FT.
(31.9 SQ.M.)

TOTAL APPROX. FLOOR AREA 730 SQ.FT. (67.8 SQ.M.)

Whilst every attempt has been made to ensure the accuracy of the floor plan contained here, measurements of doors, windows, rooms and any other items are approximate and no responsibility is taken for any error, omission, or mis-statement. This plan is for illustrative purposes only and should be used as such by any prospective purchaser. The services, systems and appliances shown have not been tested and no guarantee as to their operability or efficiency can be given

Made with Metropix ©2013