



HARPER STUDIOS, LOVE LANE, WOOLWICH SE18 6GW

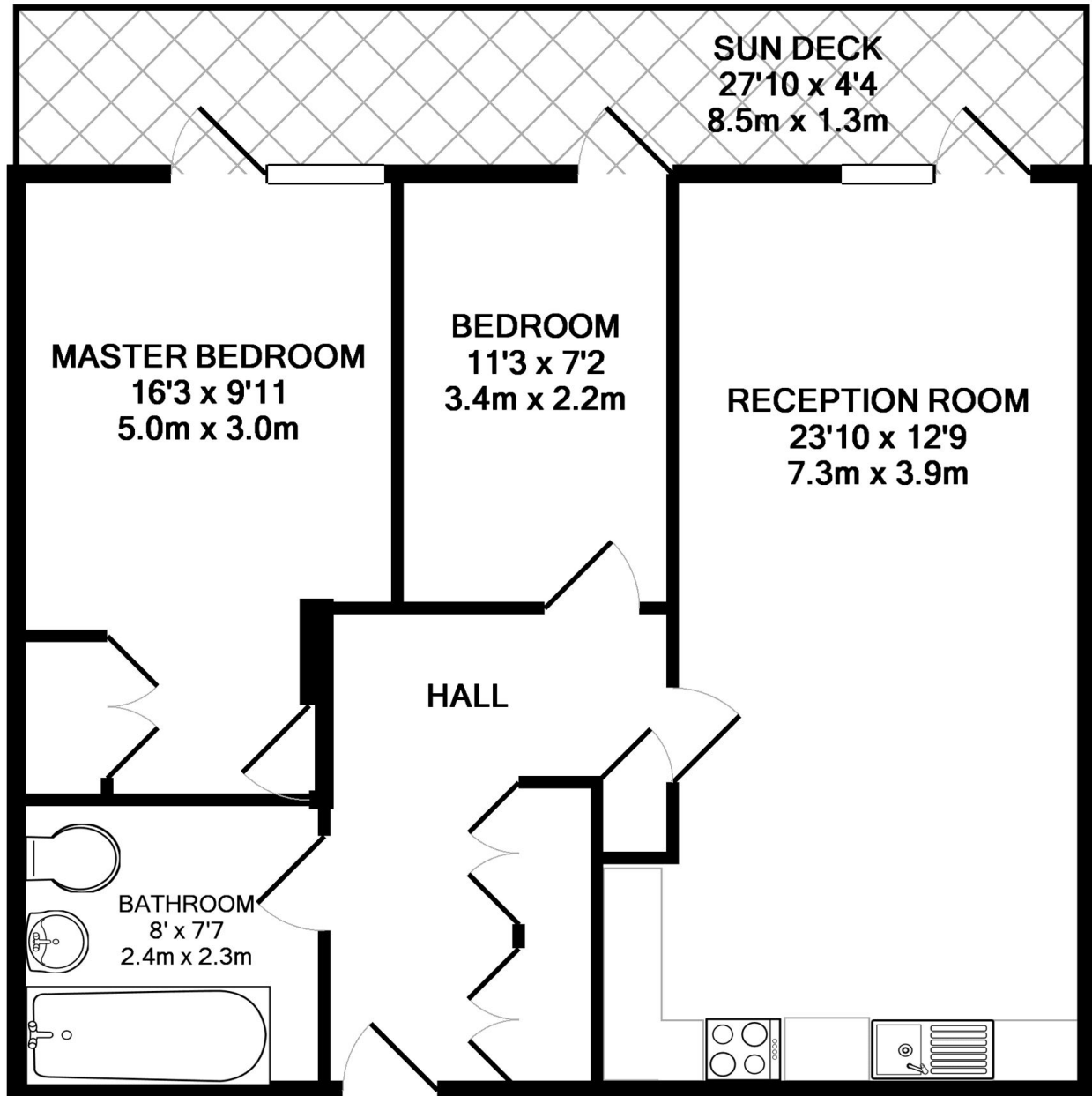
**£1,950
PCM**

A stunning eighth floor two bedroom apartment situated in the highly desirable Woolwich Central development. The apartment is located moments from the DLR and mainline train services, features a 24 hour concierge service and is well located for shops, bars and restaurants.

VIEWING BY APPOINTMENT WITH 1ST AVENUE. CALL: 020 8293 8600

**5 HARPER STUDIOS, LOVE
LANE, WOOLWICH SE18
6GW**

£1,950 PCM



TOTAL APPROX. FLOOR AREA 661 SQ.FT. (61.4 SQ.M.)

Whilst every attempt has been made to ensure the accuracy of the floor plan contained here, measurements of doors, windows, rooms and any other items are approximate and no responsibility is taken for any error, omission, or mis-statement. This plan is for illustrative purposes only and should be used as such by any prospective purchaser. The services, systems and appliances shown have not been tested and no guarantee as to their operability or efficiency can be given

Made with Metropix ©2015

**VIEWING BY APPOINTMENT
WITH 1ST AVENUE.**

CALL: 020 8293 8600

1stavenue
Real Estate Services