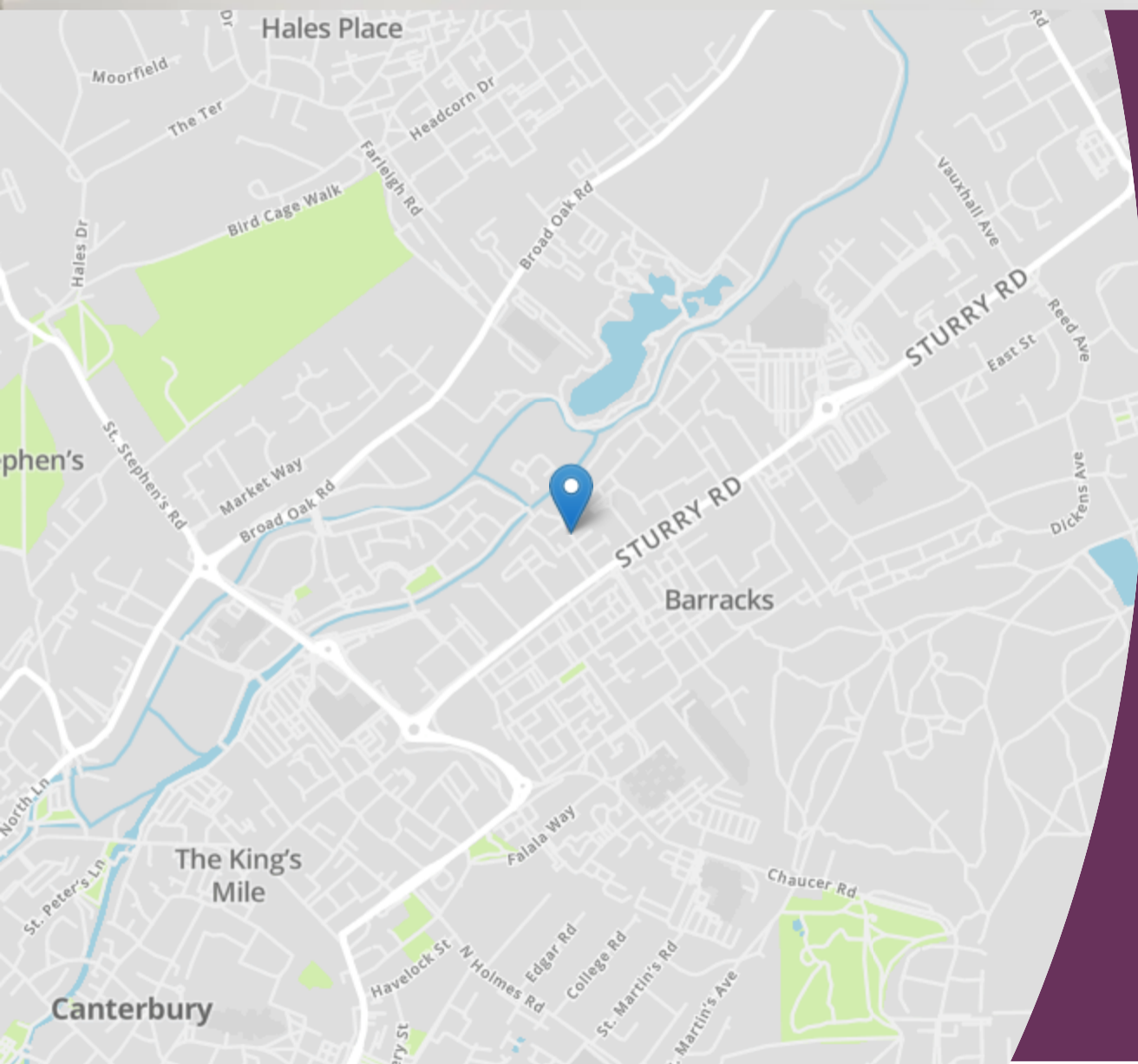


Barton Mill Road Canterbury, CT1 1BP

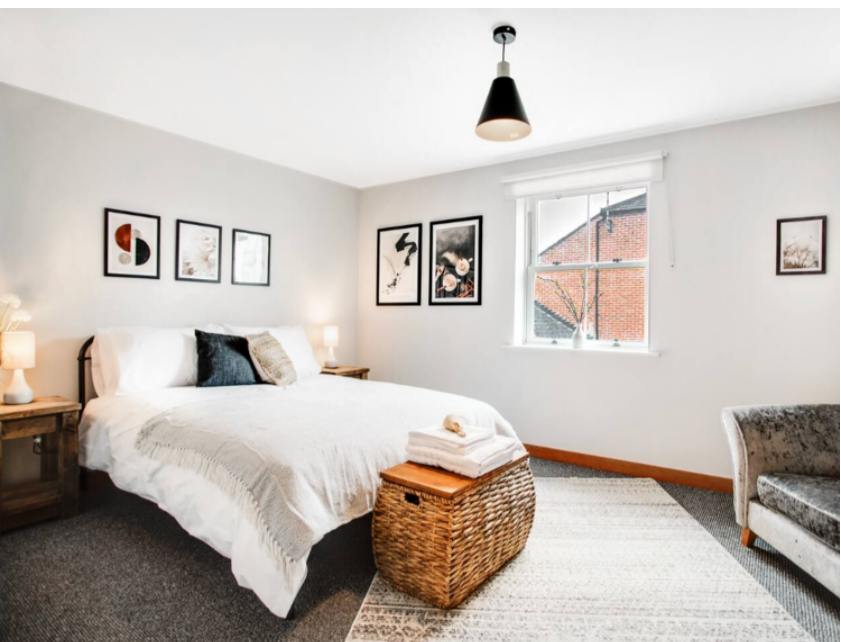
absolute living

020 3002 9002
info@absoluteliving.co.uk



absolute living

Absolute Living
143 Battersea High Street, London
SW11 3JS
020 3002 9002
info@absoluteliving.co.uk

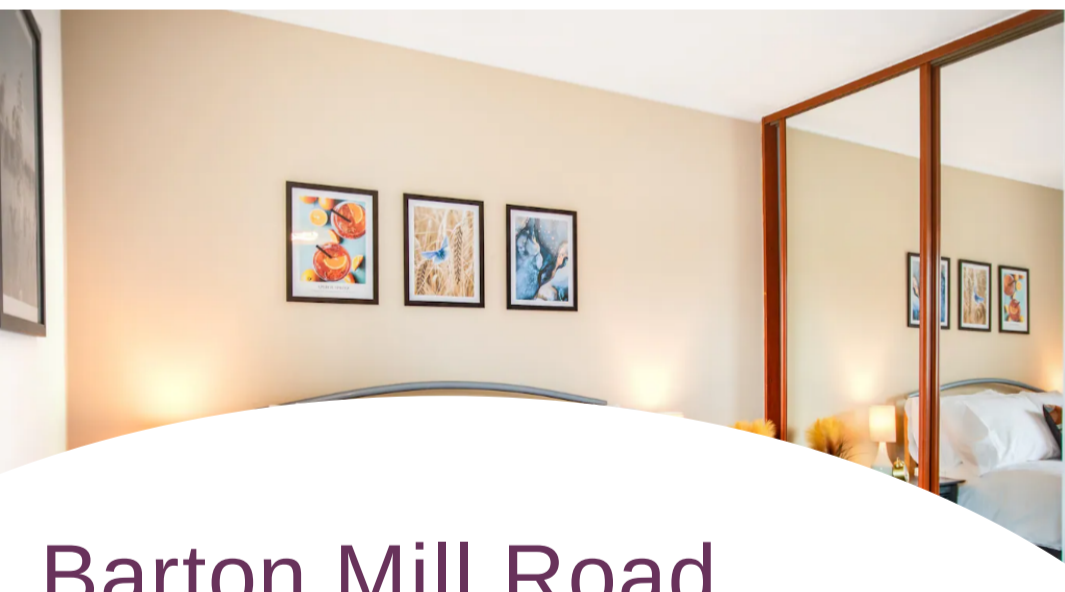


Situated in a converted mill development is this modern house, split over three levels with five double bedrooms, two bathrooms, one WC and a large open plan kitchen/ reception with dishwasher, washer/ dryer, fridge/ freezer opening onto a private garden. Ideal for University of Kent, Canterbury Christchurch, Canterbury College within a short walk of Canterbury centre on a picturesque riverside walk. Contact Ian Caplis at iancaplis@gmail.com or 07414791096. Bills package available, off street parking in garage as well as on street parking. Available beginning of July 2025.



- Barton Mill Road CT1
- Free on street parking and private garage
- Private garden
- Close to city centre
- 07414791096

- Modern open plan kitchen/ reception with dishwasher and large fridge/ freezer
- Bills package available please call to discuss
- Fully furnished
- iancaplis@gmail.com



Barton Mill Road

Canterbury City Centre, Canterbury, CT1 1BP

Barton Mill Road CT1. Set in a riverside development, this modern 5 double bedroom house for students offers two bathrooms and a separate WC, garden and garage in converted mill development a short riverside walk to Canterbury City Centre and universities. Available July 2025, bills package available. £440 per person per month based on a group of 5 tenants as a group.

