



**Bromley Common,**

Bromley, Kent. BR2 9RJ

Tenure: Freehold

3 Bedrooms | 2 Reception Rooms | 1 Bathroom



The three-bedroom semi-detached home is located on Bromley Common amidst mainly similar style homes, within proximity of Bromley Shopping Centre and Railway Station. The accommodation comprises an entrance hall, two reception rooms, and a kitchen/breakfast room. On the first floor, you will find three bedrooms, and a family bathroom/WC off a landing. The rear garden is lawned and paved with shrub borders and parking to the rear. EPC Rating: D

Enquiries To:

T: 020 8464 5555

E: [brsales@georgeproctor.com](mailto:brsales@georgeproctor.com)

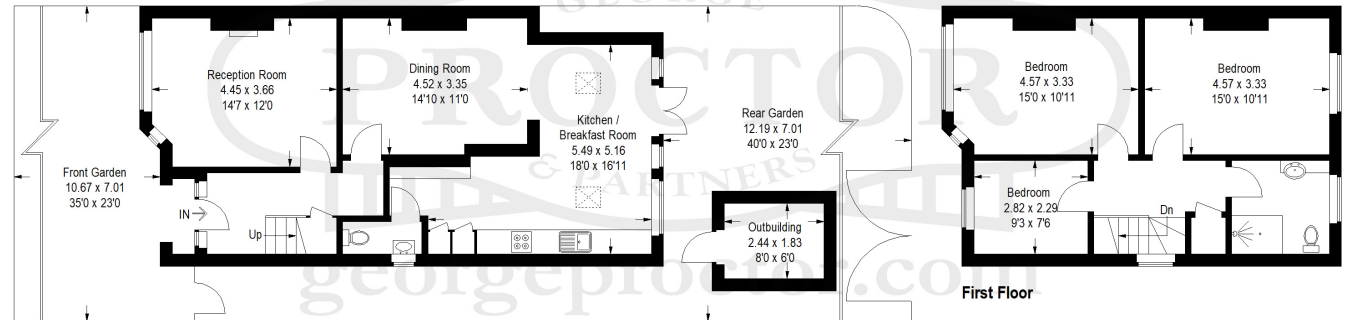


Bromley Office

10-12 Chatterton Road, Bromley, Kent, BR2 9QN

### Bromley Common

Approximate Gross Internal Area = 118.9 sq m / 1280 sq ft  
Outbuilding = 4.4 sq m / 48 sq ft  
Total = 123.3 sq m / 1328 sq ft



Ground Floor

First Floor

These particulars whilst believed to be accurate are made without responsibility on the part of the vendor or agents, their accuracy is not guaranteed nor do they form part of any contract and no warranty is given. Services or appliances have not been tested and no guarantee can be given as to their operation, buyers should seek professional advice where necessary. All measurements are approximate and may be rounded to the nearest three inches (10 cm). Floor plans, where shown, are indicative only. Any photographs included may be taken with the use of a wide angle lens. If there is a matter of particular interest please contact us for further information, especially before travelling any distance to view. Map reproduced by permission of Geographers A-Z Map Co Ltd. Licence No. A0514. This map is based upon Ordnance Survey maps with the permission of the controller of Her Majesty's Stationary Office.