



Norman Road
Tunbridge Wells
Kent
TN1

Offers In Excess Of £285,000

bettermove

Norman Road Tunbridge Wells

Bettermove are proud to present this 3 bedroom terraced house in Tunbridge Wells, available with no forward chain.

This is currently a tenanted property and will be sold with tenants in situ for immediate investment. Rental yields can be obtained through Bettermove.

This property benefits from double glazing, and gas central heating throughout, with on street parking available.

The council tax band is C.

Spread elegantly across three floors, this beautifully presented home offers spacious and versatile living throughout. The lower ground floor features a dining room, fitted kitchen, and a modern family bathroom. On the ground floor, you'll find a generous lounge alongside bedroom three. The first floor hosts two well-proportioned double bedrooms, with the principal bedroom benefiting from its own adjoining WC for added convenience. Outside, the property enjoys a private, decked rear garden, ideal during the warmer months.

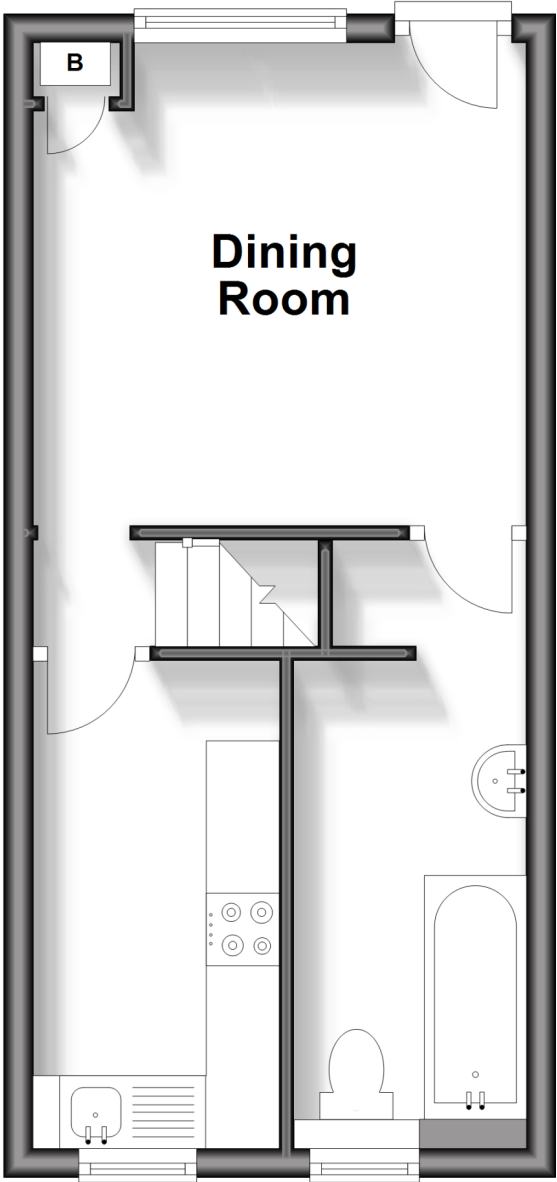
Located in the popular town of Tunbridge Wells, the property is close to a range of amenities, including shops, supermarkets, restaurants, pubs, and schools. Excellent transport links can be found from Tunbridge Wells Train Station (1.1 miles), a variety of local bus routes, and quick access to the A26.

This exciting investment opportunity should not be missed! All enquiries can be made through Bettermove.



Lower Ground Floor

Approx. 25.7 sq. metres (276.5 sq. feet)



First Floor Approx. 25.7 sq. metres (276.5 sq. feet) **Ground Floor** Approx. 25.7 sq. metres (276.5 sq. feet)



Energy Efficiency Rating		
	Current	Potential
Very energy efficient - lower running costs		
(92+) A		
(81-91) B		84
(69-80) C	69	
(55-68) D		
(39-54) E		
(21-38) F		
(1-20) G		
Not energy efficient - higher running costs		
England, Scotland & Wales		
EU Directive 2002/91/EC		



20-22 Bridge End, Leeds, LS1 4DJ
t: 0330 004 0050 e: hello@bettermove.co.uk
www.bettermove.co.uk