

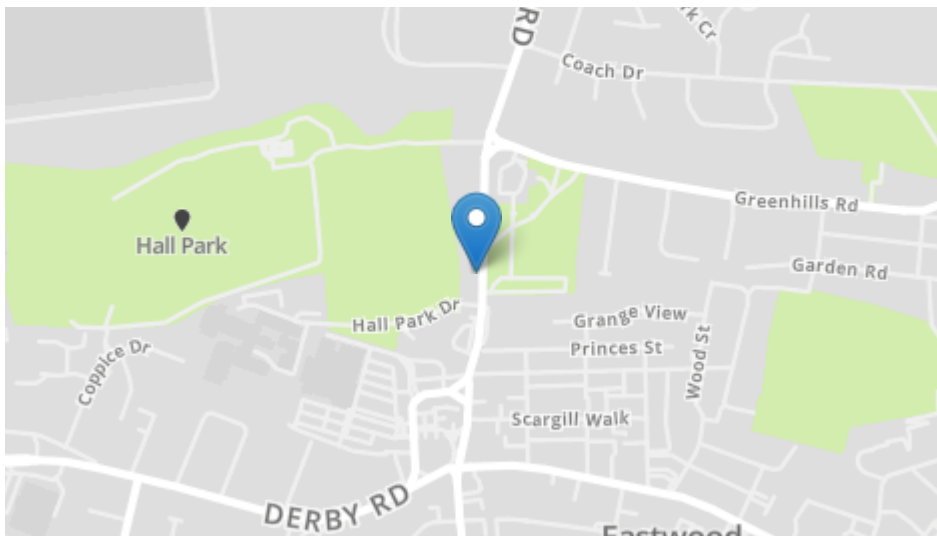
27 Mansfield Road, Eastwood, Nottingham, NG16 3DY

£550,000



27 Mansfield Road, Eastwood, Nottingham, NG16 3DY

£550,000



want to view?

Call us on 0115 938 5577

Our lines are open 8am - 8pm

7 Days a week

or email

mail@watsons-residential.co.uk

Ref - 29771133



Our Seller says....

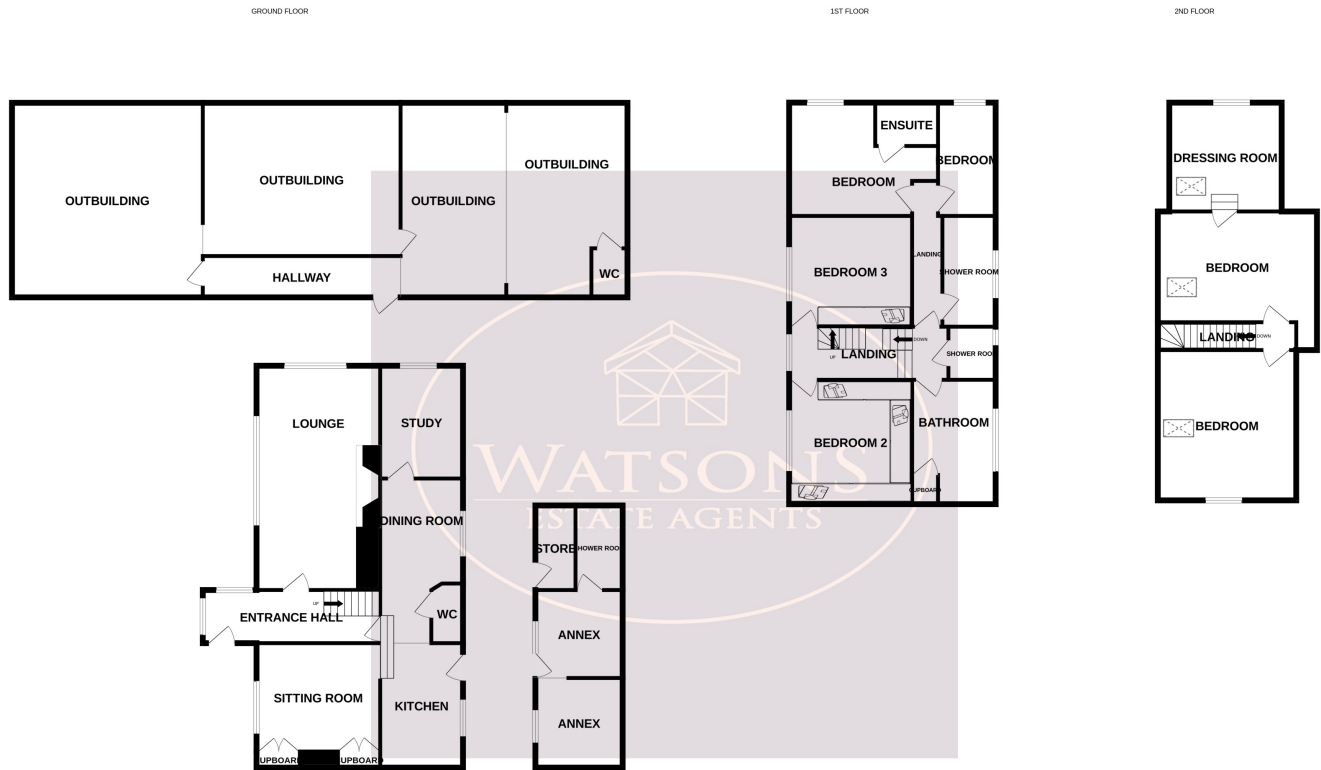
- Substantial Detached Property
- Three Storey Accommodation
- Six Good Size Bedrooms
- Four Spacious Reception Rooms & Dressing Rooms
- Modern Open Plan Dining Kitchen
- Ground Floor WC & Ensuite To Primary Bedroom
- Two Shower Rooms & Bathroom
- Separate Annex With Shower Room
- Four Outbuildings With WC
- No Upward Chain

40 Main Street, Kimberley, NG16 2LY
www.watsons-residential.co.uk

0115 938 5577
8am-8pm - 7days

Important note to buyers: As the selling agents for the property described in this brochure we have taken all reasonable steps to ensure our property particulars are fair, accurate, reliable and reproduced in good faith however they do not form part of any offer or contract and do not constitute representations of fact. If you become aware that any information provided to you is inaccurate please contact our office as soon as possible so we can make the necessary amendments. All measurements are provided as a general guide and floor plans are for illustration purposes only. Appliances, equipment and services in the property have not been tested by us and we recommend all prospective buyers instruct their own service reports or surveys prior to exchanging contracts.





466

Source: [10]

2.75m x 2.15m (9'2" x 6'9") IPIC double glazed window to the site and open access to room 2

Step 10

2.75m x 2.75m (8'10" x 8'10") UFG double sided plate in the wall

Keywords:

© 2004 Blackwell Publishing Ltd, *Journal of Internal Medicine* 255: 109–116

Wiley

Enter entrance door, turn right to the front and door to out-bulding

④-4762

 $6.00\text{ cm} \times 5.00\text{ cm} = 30.0\text{ cm}^2$

Quoted

6.15m x 6.75m (20' 7" x 22' 3")

Chattahoochee

 $0.004\text{ m} \times 0.25\text{ m} (10^{-3}\text{ m} \times 10^{-1}\text{ m})$

545

6.00m x 3.75m (19' 8" x 12' 3") (See 1 to 5)

100

5.00m x 5.10m (16'11" x 16'7")

1999