



Northway

01684 293246



20 George Dowty Drive, Northway, Tewkesbury, GL20 8RN

Beautifully presented, this bungalow offers open plan, modern and contemporary styled accommodation.

As you enter this bungalow you will be welcomed by a beautifully light and modern space with the hall leading through to the open plan lounge and dining room with archways leading through to the modern kitchen.

The lounge area has a log burner – just perfect for those cosy winter nights. The kitchen is fitted with a range of wall and base units and has the benefit of patio doors leading out to the garden.

At the front of the bungalow there is a double bedroom and main bathroom. The bathroom is fitted with a bath with shower over, pedestal wash basin and low level wc.

The property has the benefit of a combination boiler serving the central heating and hot water system and has upvc double glazed windows and doors.



Outside the gardens are delightful being larger than expected and cleverly landscaped with low maintenance in mind and planted with mature shrubs and trees to give a softness and welcome privacy. It has the benefit of a greenhouse, garden shed and gated side access to the front.

At the front there is ample off road parking.

The bungalow is situated in a close overlooking a small green providing a lovely open aspect at the front.

Northway is a popular residential area of the town served by its own local convenience stores and within easy reach of Tewkesbury town centre itself, train station, schools and the soon to be opened, Outlet village.

Centrally situated between Cheltenham (10 miles), Worcester (18 miles), Gloucester (11 miles) M5 J9 (.5 miles) Ashchurch Station (.5 miles) it is an excellent commuting base.

Ground Floor

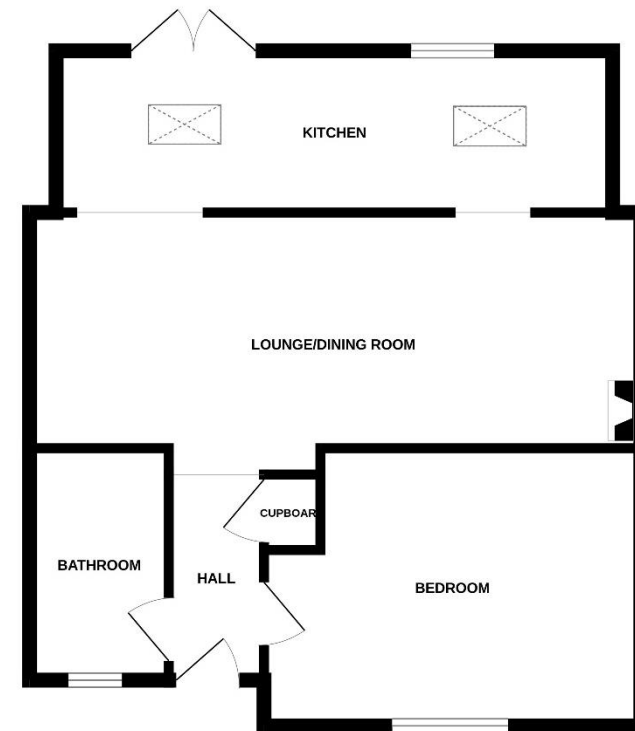
Open plan lounge/dining room 23'11"x10'3"
Kitchen 22'x6'4"

Bedroom 14'11"x11'
Bathroom 9'3"x5'9"

Outside

Garden Shed

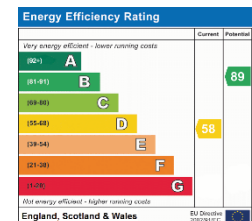
Tewkesbury Borough Council Tax Band A



Guide Price £230,000 Freehold

Viewing strictly by arrangement with Engall Castle Ltd
155 High Street Tewkesbury Gloucestershire GL20 5JP
Office hours: Mon – Fri 9am to 6pm, Sat 9am to 4pm
email: sales@engallcastle.com

01684 293 246
www.engallcastle.com



This floorplan is provided for guidance only as an approximate layout of the property and should not be relied upon as a statement of fact.

Agents Note

These property details are set out as a general outline only and do not constitute any part of an Offer or Contract. Any services equipment, fittings or central heating systems have not been tested and no warranty is given or implied by Engall Castle Ltd that these are in working order. Buyers are advised to obtain verification from their solicitor or surveyor. Fixtures and fittings or other items are not included unless specifically described. All measurements, distances and areas are approximate and for guidance only and should not be relied upon for the purposes of fitting carpets or furniture etc. These property details and all statements within this document are provided without responsibility on behalf of Engall Castle Ltd or its employees or representatives and should not be relied on as statements of fact. Prospective purchasers must satisfy themselves as to the accuracy of all details pertaining to the property.

