



Tel: 01242 676767

www.cotswoldestateagents.co.uk

41a Church Road, Bishops Cleeve, Cheltenham, GL52 8LP

1, Middlehay Court
Bishops Cleeve GL52 8TE

£229,950



FOR SALE

A wonderful opportunity to acquire this spacious two double bedroom coach house set in a small cul-de-sac within a prime village location. The well planned living accommodation comprises to the ground floor a good sized double bedroom. On the first there is a generous lounge/dining room, fitted kitchen, bathroom and a double bedroom. to the exterior is a raised brick flower planter and a block paved driveway. The property is convenient to the village centre with its wide range of shopping facilities and amenities.

Entrance hall with door to bedroom two and stairs to first floor living accommodation. Bedroom two: window to front aspect, wooden laminate flooring and large built in under stairs storage cupboard housing gas combination boiler.

First floor: lounge/dining room: double aspect windows, archway to inner hall and kitchen. Kitchen: window to front aspect, fitted with a matching range of storage units, electric cooker point, space and plumbing for washing machine and appliance space, inner hall with doors to airing cupboard, bathroom and double bedroom. Bathroom: window to rear aspect, bath with tiled splashbacks fitted with Mira shower unit, WC, wash hand basin and chrome heated towel rail. Bedroom one: window to front aspect and built in double wardrobe.

Exterior: Raised brick flower planter stocked with various flower and shrubs. A block paved driveway for one vehicle. There is also additional visitors off road parking.

Lounge/dining room: 20'7 max x 18' max

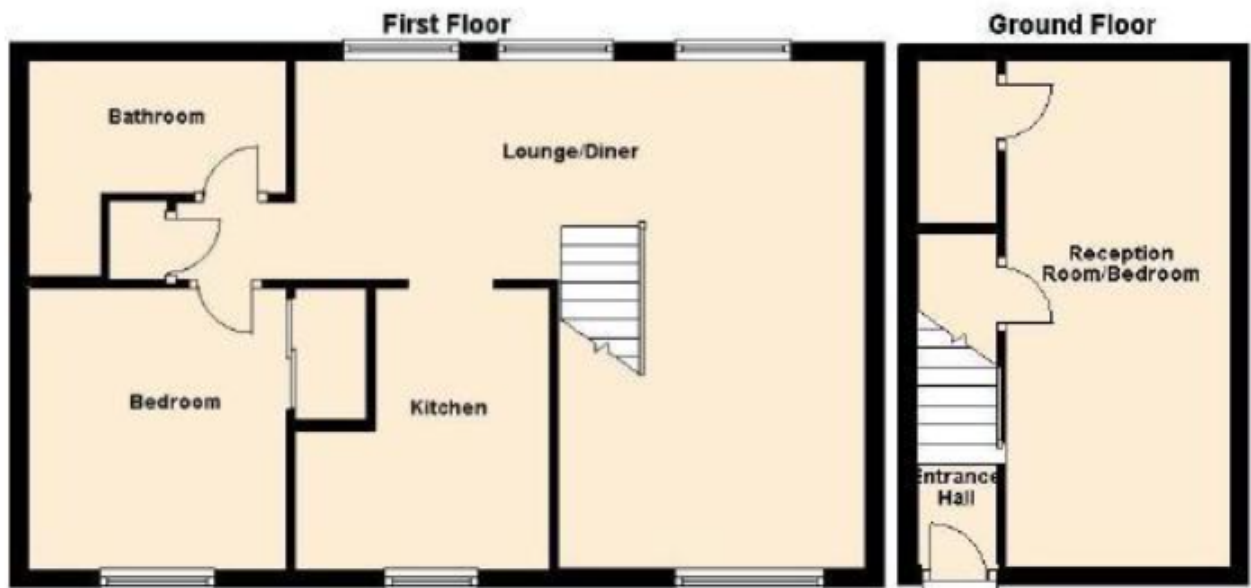
Kitchen: 9'6 max x 8'7 max

Bedroom one: 10'5 max x 8'2 max

Bedroom two: 17'7 x 7'10







Energy Efficiency Rating		Current	Potential
Very energy efficient - lower running costs			
(92+)	A		
(81-91)	B		86
(69-80)	C	70	
(55-68)	D		
(39-54)	E		
(21-38)	F		
(1-20)	G		
Not energy efficient - higher running costs			
England, Scotland & Wales		EU Directive 2002/91/EC	