



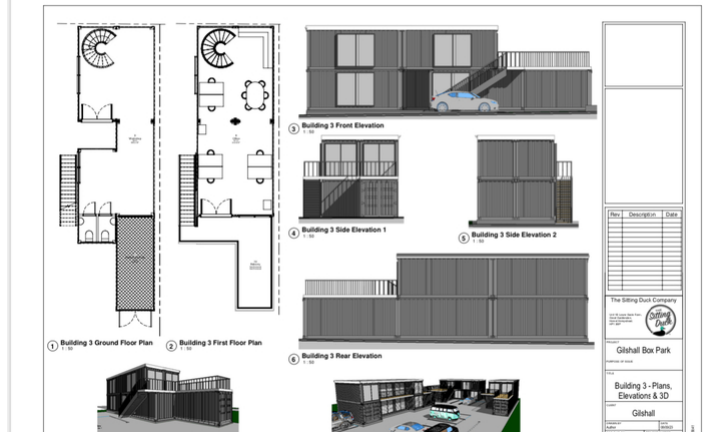
Gaddestone Row, Hemel Hempstead

£90,000

We are pleased to offer an opportunity to an investor to purchase a piece of land which subject to planning could be used for offices/ storage facilities. (Drawings attached are for illustration purposes only)

The land is situated in a beautiful part of the Hemel Hempstead countryside. The size of the plot on offer is 800m2, with a private road leading up to the piece of land.

www.whitewoodproperties.co.uk



W **W** **WHITEWOOD**
ESTATES
COUNTRY HOMES & VILLAGE PROPERTIES