



Elenbe House, Pencroft Drive, Dartford, Kent, DA1 2PB
£1,250,000 Freehold

Description

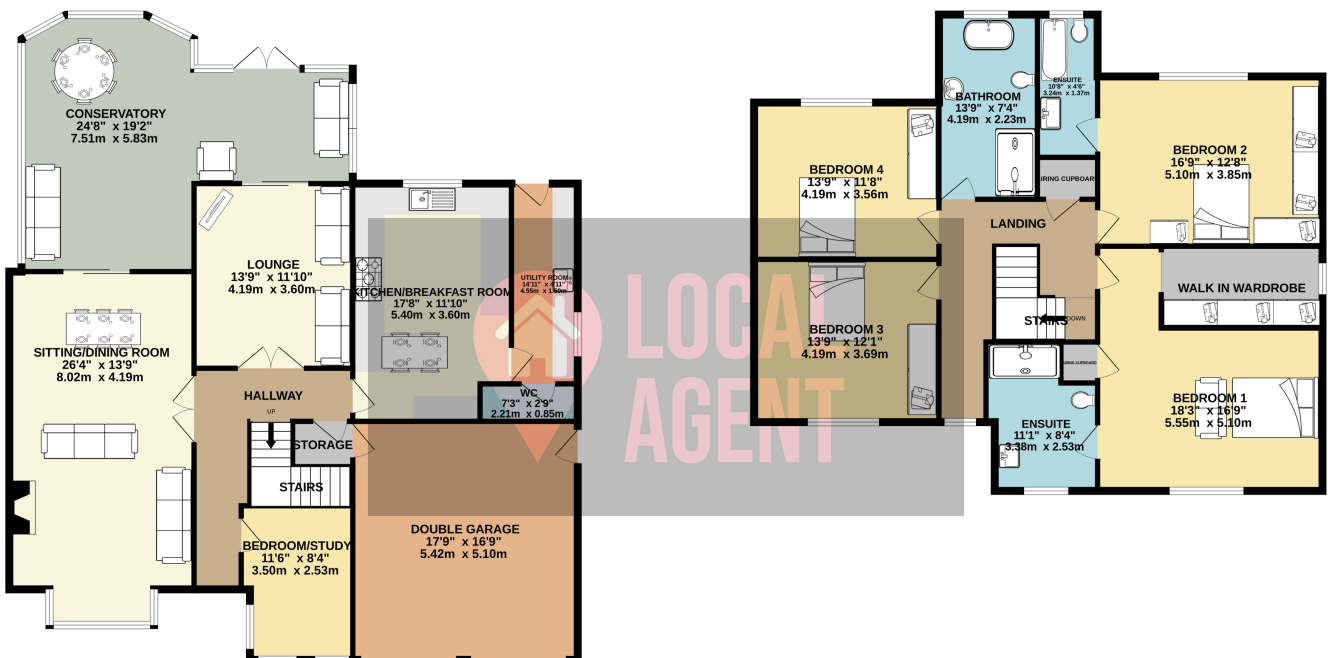
Guide Price £1,250,000 - £1,350,000

Located in West Dartford's most prestigious private road, tucked away in a close surrounded by trees you will find this very limited opportunity for anyone wishing to live in this highly sought after position. This beautiful detached home caters for large families and offers a well maintained garden with established trees and flower beds.

Perfectly located within walking distance to both Dartford Grammar Schools and sought after Wentworth and West Hill Primary Schools. Dartford and Crayford town centre are both a short walk away with many shops, cafes, pubs and restaurants. Within walking distance to both Dartford and Crayford High Street. Crayford Retail Park and Crayford Station approximately 1.5 miles away and Dartford Station at 0.9 miles with direct links to London and within the Oyster zone has become popular for the London commuter and with easy access to the A2 and M25. Other local benefits include the recently refurbished Fairfield Pool & Leisure Centre, David Lloyd Club and Dartford Football Stadium. For Dog walkers and outdoor enthusiast Dartford Heath is just a couple of minutes walk to enjoy the heathlands and wooded areas.

GROUND FLOOR
1670 sq.ft. (155.2 sq.m.) approx.

1ST FLOOR
1241 sq.ft. (115.3 sq.m.) approx.



TOTAL FLOOR AREA : 2911 sq.ft. (270.4 sq.m.) approx.

Whilst every attempt has been made to ensure the accuracy of the floorplan contained here, measurements of doors, windows, rooms and any other items are approximate and no responsibility is taken for any error, omission or mis-statement. This plan is for illustrative purposes only and should be used as such by any