



Margetts Road, Kempston, Bedford, Bedfordshire MK42 8DT

WALDENS ESTATE AGENTS



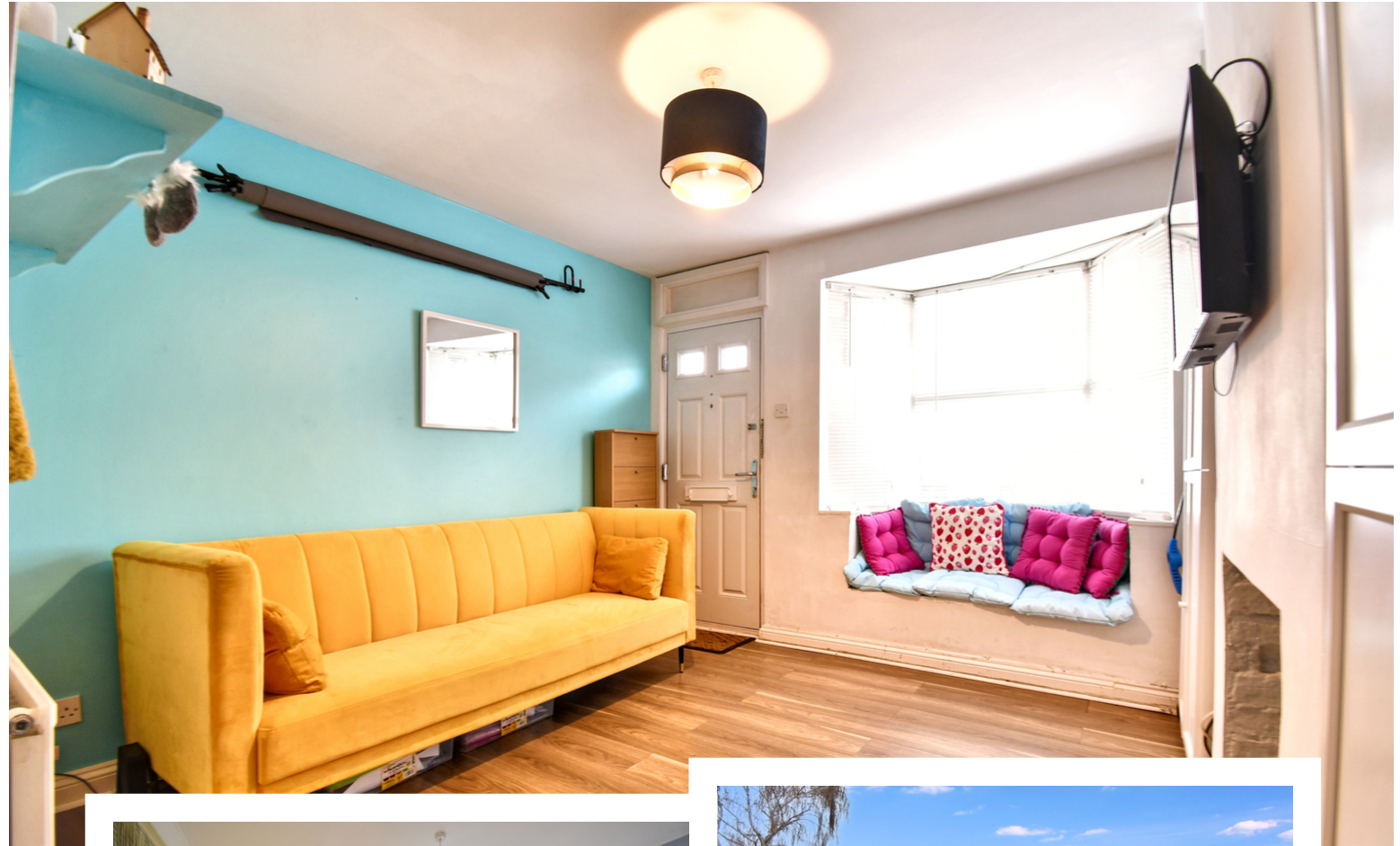
Margetts Road
Kempston
Bedford
Bedfordshire
MK42 8DT

£260,000

Well presented and improved two bedroom terraced property benefitting from separate lounge & Sitting room. Spacious kitchen. Enclosed rear garden measuring just over 100 ft. Close to all amenities. Being sold with no onward chain.

- Well presented two bedroom terraced property
- Double glazed and gas central heating
- Lounge
- Sitting room
- Spacious kitchen
- Two bedrooms and bathroom on the first floor
- Large rear garden measuring over 100 ft
- No onward chain

- Council Tax Band B
- Energy Efficiency Rating C

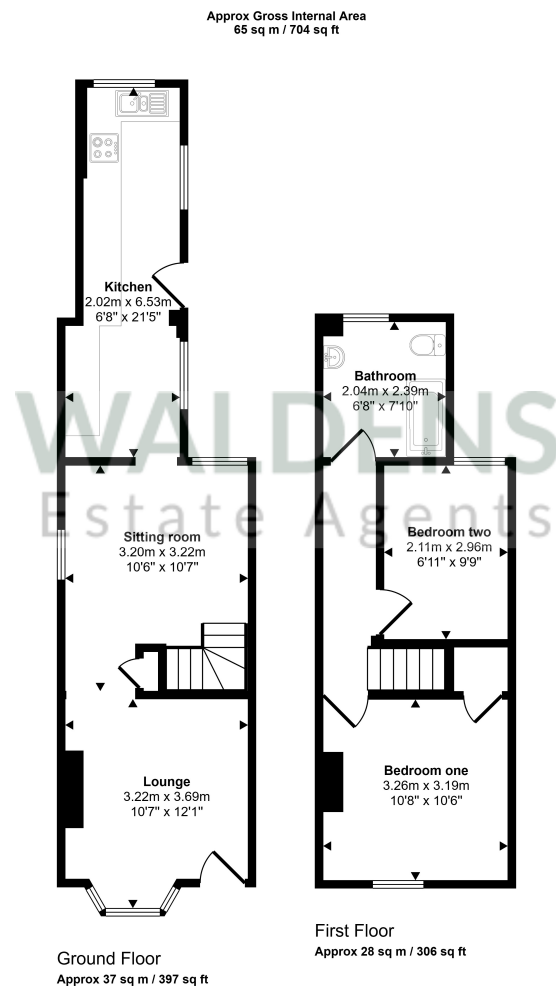


Close to local shops, schools and other amenities

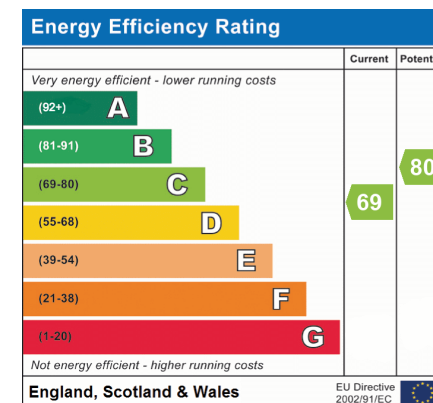


Entering the property, you step into the lounge which offers ample space to relax. A doorway leads through to the sitting room, which features stairs to the first floor and access to the kitchen. The kitchen, as previously noted, is spacious and well-equipped, providing space and plumbing for both a dishwasher and washing machine, along with a built-in oven and hob. A wall-mounted boiler is also located here. A rear door opens out to the garden. Upstairs, the first floor comprises two bedrooms and a three-piece bathroom. Outside, the impressive rear garden extends to just over 100ft, mainly laid to lawn, with a decking area positioned at the far end. The garden benefits from a power supply towards the rear and has gated side access. The front garden is enclosed by brick walling.





This floorplan is only for illustrative purposes and is not to scale. Measurements of rooms, doors, windows, and any items are approximate and no responsibility is taken for any error, omission or mis-statement. Icons of items such as bathroom suites are representations only and may not look like the real items. Made with Made Snappy 360.



01234 856684 | sales@waldens.co.uk | www.waldens.co.uk | 188-190 Bedford Road, Bedford, MK42 8BL

The information contained in the property details are designed to help you decide whether you would like to view the property and to avoid wasting your time in viewing unsuitable properties. We endeavour to ensure accurate information is detailed, but we are largely guided by information supplied to us by the seller. We are unable to check all aspects of the property as this would be prohibitive. Some of the photographs are taken using a wide- angled lens. Where a floor plan has been provided, this is for guidance purposes only.

