

FOR SALE

£580,000

Devon Close, Perivale, Greenford, Greater London. UB6



Peter Gamble & Co. offer to the market this SUPERB 3 BEDROOM SEMI-DETACHED home.

Situated on this popular and quiet residential cul-de-sac the property is just moments from local shops, bus routes and tube stations.

Offered to the market for CHAIN FREE SALE.

The property is approached via the large paved driveway with parking for at least 3 cars.

Entrance porch leads to the thru lounge, separate kitchen..



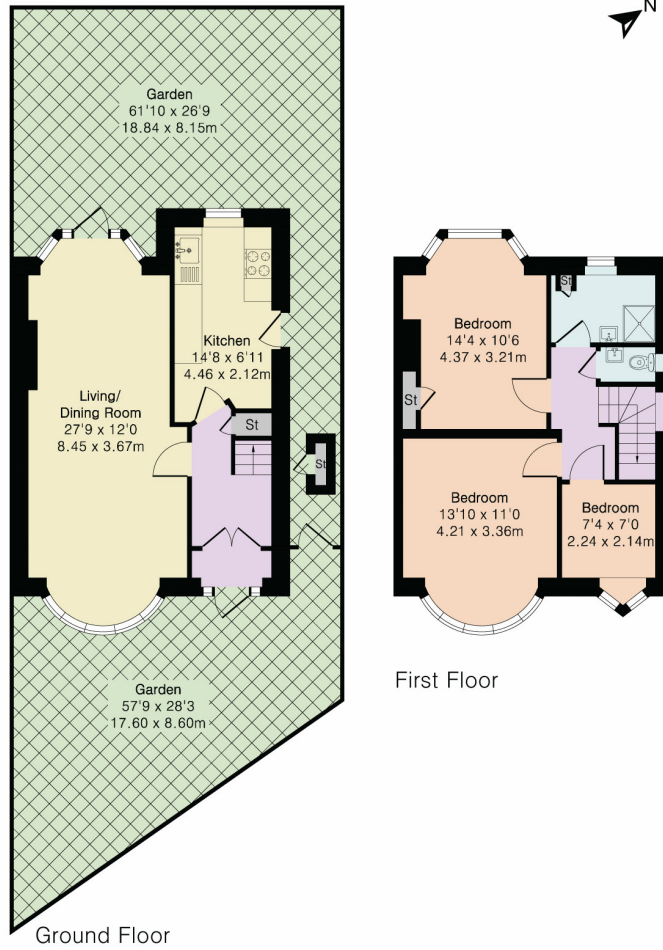








**Approximate Gross Internal Area 912 sq ft - 84 sq m**  
 Ground Floor Area 467 sq ft – 43 sq m  
 First Floor Area 445 sq ft – 41 sq m



Floor plan produced in accordance with RICS Property Measurement 2nd Edition. Although Pink Plan Ltd ensures the highest level of accuracy, measurements of doors, windows and rooms are approximate and no responsibility is taken for error, omission or misstatement. These plans are for representation purposes only and no guarantee is given on the total square footage of the property within this plan. The figure icon is for initial guidance only and should not be relied on as a basis of valuation.

