



**Ryder Court, Charles Sevrigh Way, Mill Hill, NW7**

**£499,950**



## Ryder Court, Charles Sevrigh Way, Mill Hill, NW7

A bright and beautiful two double bedroom, two bathroom apartment located on the first floor of Ryder Court offering 850 Sq Ft (78 SQ M) of internal space. Key features include a large balcony and an allocated parking space.

The owners LOVE "the natural light that you get in the apartment. Waking up to amazing sunrises from our bedroom window and watching the sun go down from the second bedroom and lounge is the highlight of our day, it really is an amazing feature. Not being overlooked is another huge bonus and being on this side of the building means it's very quiet and the views out to the officers mess and the nature is a really impressive outlook. The summer evenings on our balcony is something we'll really miss."

Ryder Court is located within the highly sought after Millbrook Park, situated just 0.5 miles from Mill Hill East underground station (Northern Line).

### Features

- Ideal First Time Purchase
- Long Lease
- Immaculately Presented
- Two Double Bedrooms
- Two Bathrooms
- Modern Building
- First Floor Apartment
- Delightful Balcony
- One Allocated Parking Space
- 850 Sq Ft (78 Sq M) Of Internal Space

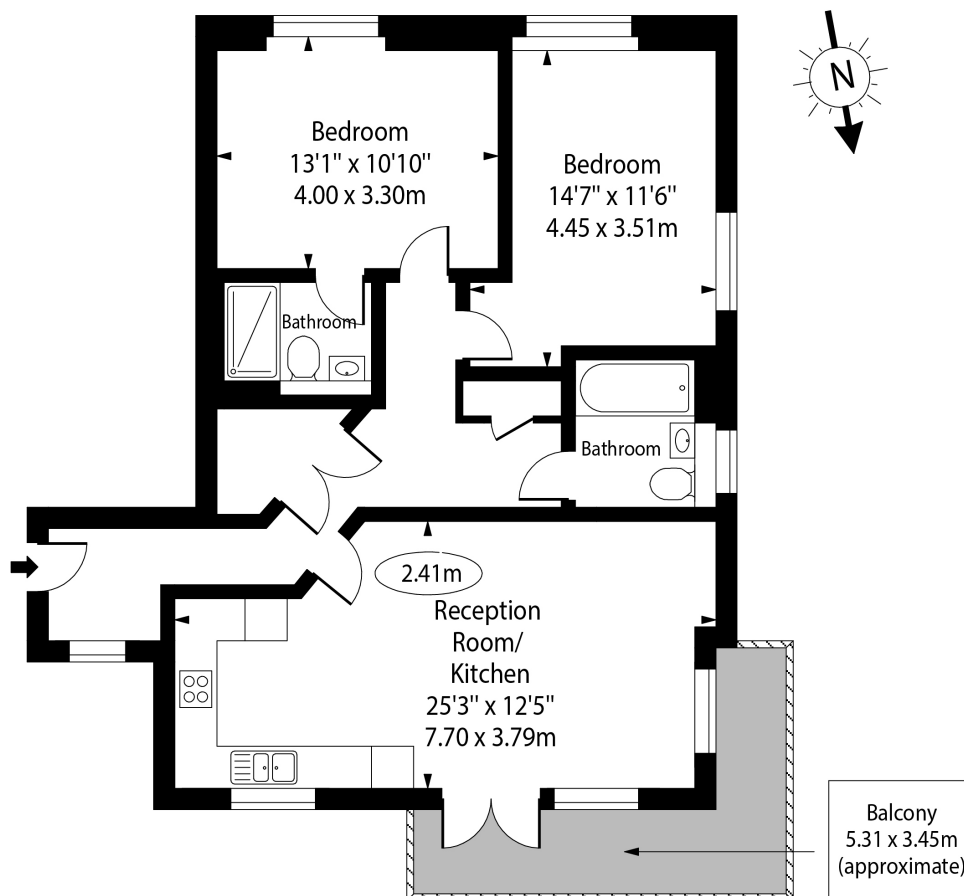






Ryder Court, Charles  
Sevright Way, Mill Hill  
, NW7

Ryder Court,  
Millbrook Park, NW7



First Floor

Approx Gross Internal Area 850 Sq Ft - 78.96 Sq M

For Illustration Purposes Only - Not To Scale Floor Plan by [www.nogaphotostudio.com](http://www.nogaphotostudio.com) Ref: No.48729

This floor plan should be used as a general outline for guidance only. Any intending purchaser or lessee should satisfy themselves by inspection, searches, enquiries and full survey as to the correctness of each statement. Any areas, measurements or distances quoted are approximate and should not be used to value a property or be the basis of any sale or let.