



17 Tiverton Court, Blakemere Drive £850

Northwich CW9 8UT

www.westates.co.uk

01606 331784



- First Floor Apartment
- Large Living Room
- Fitted & Equipped Kitchen
- Two Double Bedrooms
- Two Bath/Shower Rooms
- Allocated Parking Space

Description

A spacious and well presented first floor apartment, located on the popular Kingsmead development. The property is well decorated with new carpets and modern fixtures and fittings. Warmed by electric heaters and with PVCu double glazing. Comprises: Secure intercom controlled entrance with staircase to first floor. Entrance hall, large living room with bay window, fully fitted and equipped kitchen, two double bedrooms, en-suite shower room and bathroom. Outside there are communal gardens and there is an allocated parking space and a couple communal visitors spaces.



Location
Tenure

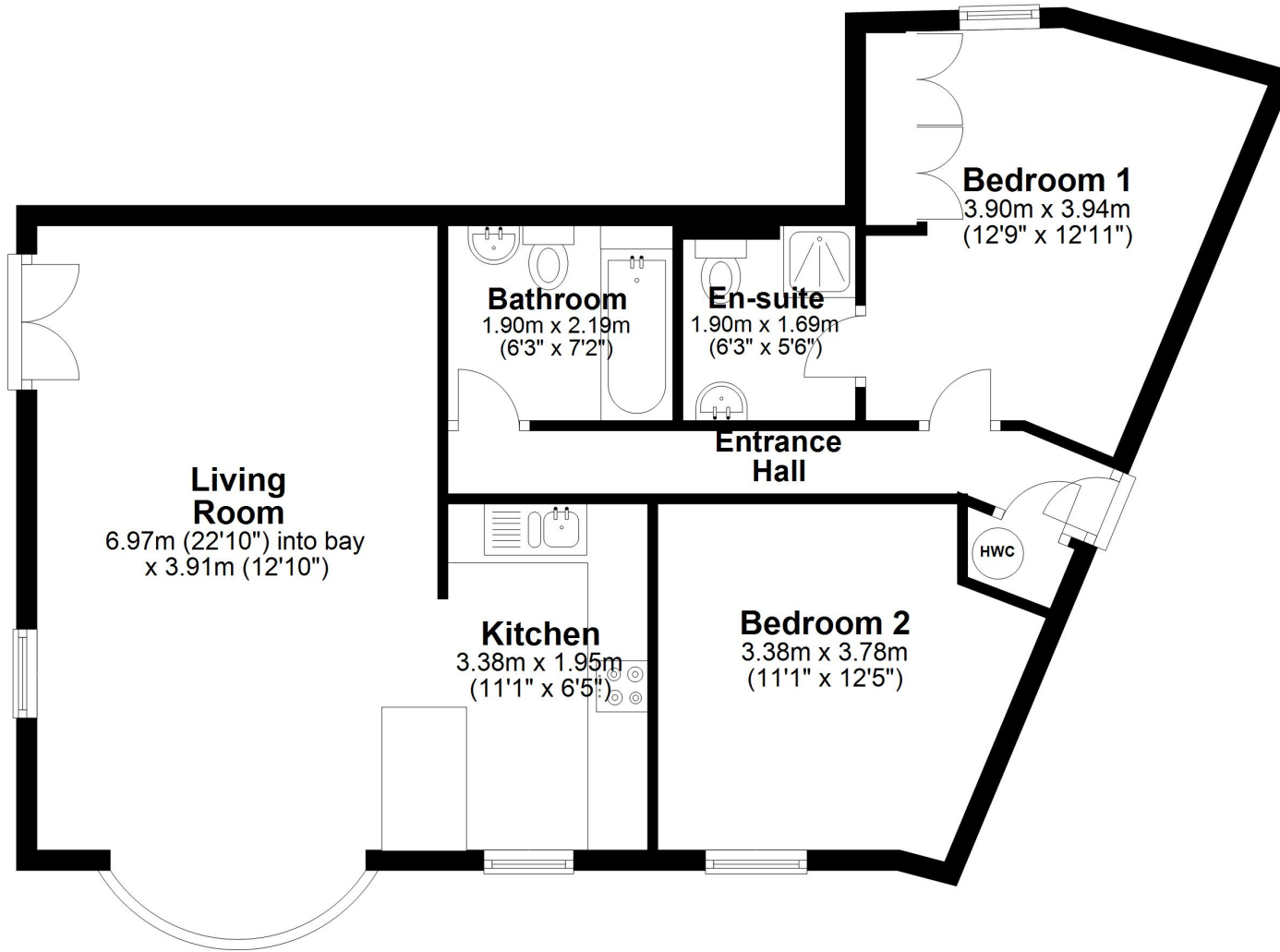
EPC Rating: B

Important Notes
Type Here



First Floor

Approx. 69.2 sq. metres (744.9 sq. feet)



Total area: approx. 69.2 sq. metres (744.9 sq. feet)



These particulars, whilst believed to be accurate are set out as a general outline only for guidance and do not constitute any part of an offer or contract. Intending purchasers should not rely on them as statements of representation of fact, but must satisfy themselves by inspection or otherwise as to their accuracy. All measurements quoted are approximate. We are unable to confirm the working order of any fixtures and fittings including appliances that are included in these particulars. No person in this firm's employment has the authority to make or give any representation or warranty in respect of the property.