



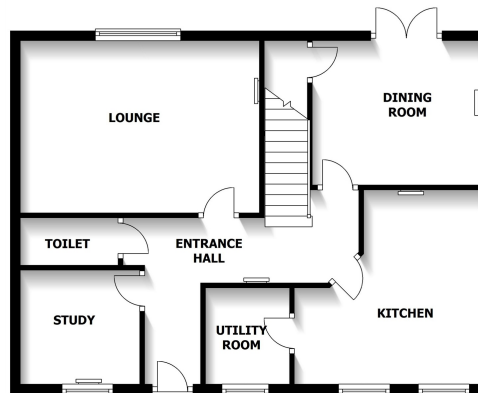
17 Weavers Close, Lytham St Annes, Lancashire, FY8 4UL
£1,100 pcm Leasehold

Energy Efficiency Rating		Environmental Impact (CO ₂) Rating	
Current	Potential	Current	Potential
More energy efficient - lower running costs 102-110 A 83-101 B 69-82 C 55-68 D 39-54 E 21-38 F 1-20 G		More environmentally friendly - lower CO ₂ emissions 102-110 A 83-101 B 69-82 C 55-68 D 39-54 E 21-38 F 1-20 G	
	72		66
Not energy efficient - higher running costs England, Scotland & Wales <small>© Crown Copyright 2010</small>		Not environmentally friendly - higher CO ₂ emissions England, Scotland & Wales <small>© Crown Copyright 2010</small>	

Description

This unfurnished modern town house is located on the popular Cypress Point development. The accommodation comprises two reception rooms, a fitted kitchen, a utility room, a study, a ground floor wc, four bedrooms, an en-suite and a family bathroom. There is a private garden to the rear and a garage. EPC: C CT: E

GROUND FLOOR



FIRST FLOOR

