

[Home \(https://www.energynetworks.org/\)](https://www.energynetworks.org/) > [Information for customers \(customers/\)](#) > Who's my network operator?

# Who's my electricity network operator?

Your electricity network operator maintains the wires that bring electricity to your home or business. They're different from your energy supplier.



Explore sections within  
**Information for customers (customers/):**

Care and assisted living providers (customers/care-and-assisted-living-providers)

Compensation for power cuts (customers/power-cut-compensation)

Getting extra help and support (customers/extra-help-for-customers)

How to prepare for storms and bad weather (customers/storms-and-bad-weather)

What are electromagnetic fields? (customers/electromagnetic-fields)

What happens during an energy shortage? (customers/what-happens-in-an-energy-shortage)

What to do during a power cut (customers/power-cut)

**Who's my network operator? (customers/find-my-network-operator)**

Wayleaves (customers/wayleaves)

Commitment to public safety (customers/public-safety-commitment)

**Electricity network operators** help connect your home to electricity and can move your electricity meter. They also fix power cuts that aren't caused by a problem inside your home. They are different from your **energy supplier**, which is the company you pay to use electricity.

Type a postcode to begin

RG401DJ

Go

Customers in the Republic of Ireland should contact [ESB Networks \(https://www.esbnetworks.ie/tns/contact-us\)](https://www.esbnetworks.ie/tns/contact-us) for electricity.

Explore sections within  
**Information for customers (customers/):**

Care and assisted living providers  
(customers/care-and-assisted-living-providers)

Compensation for power cuts  
(customers/power-cut-compensation)

Getting extra help and support  
(customers/extra-help-for-customers)

How to prepare for storms and bad weather  
(customers/storms-and-bad-weather)

What are electromagnetic fields?  
(customers/electromagnetic-fields)

What happens during an energy shortage?  
(customers/what-happens-in-an-energy-shortage)

What to do during a power cut  
(customers/power-cut)

**Who's my network operator?  
(customers/find-my-network-operator)**

Wayleaves (customers/wayleaves)

Commitment to public safety  
(customers/public-safety-commitment)

# Your electricity network operator is...



## Scottish & Southern Electricity Networks

[\(https://www.ssen.co.uk/\)](https://www.ssen.co.uk/)

---

Your electricity distribution network operator is Scottish and Southern Electricity Networks (SEPD area - southern England).

Power cut? Call 105 for free if you're in England, Scotland or Wales.

Alternatively, you can call:

0800 072 7282 (tel:0800 072 7282)

---

 [@ssencommunity](https://twitter.com/ssencommunity) (<https://twitter.com/ssencommunity>)

 [ssencommunity](https://facebook.com/ssencommunity) (<https://facebook.com/ssencommunity>)

Electricity network operator information is provided in good faith by ENA and should not be used or relied upon for decision making or commercial purposes.



# Map of the UK and Ireland's electricity network operators

An **electricity transmission operator** moves electricity over long distances using power lines from power stations to different parts of the country. An **electricity distribution network operator** takes that electricity and delivers it to homes and businesses using smaller power lines and cables.

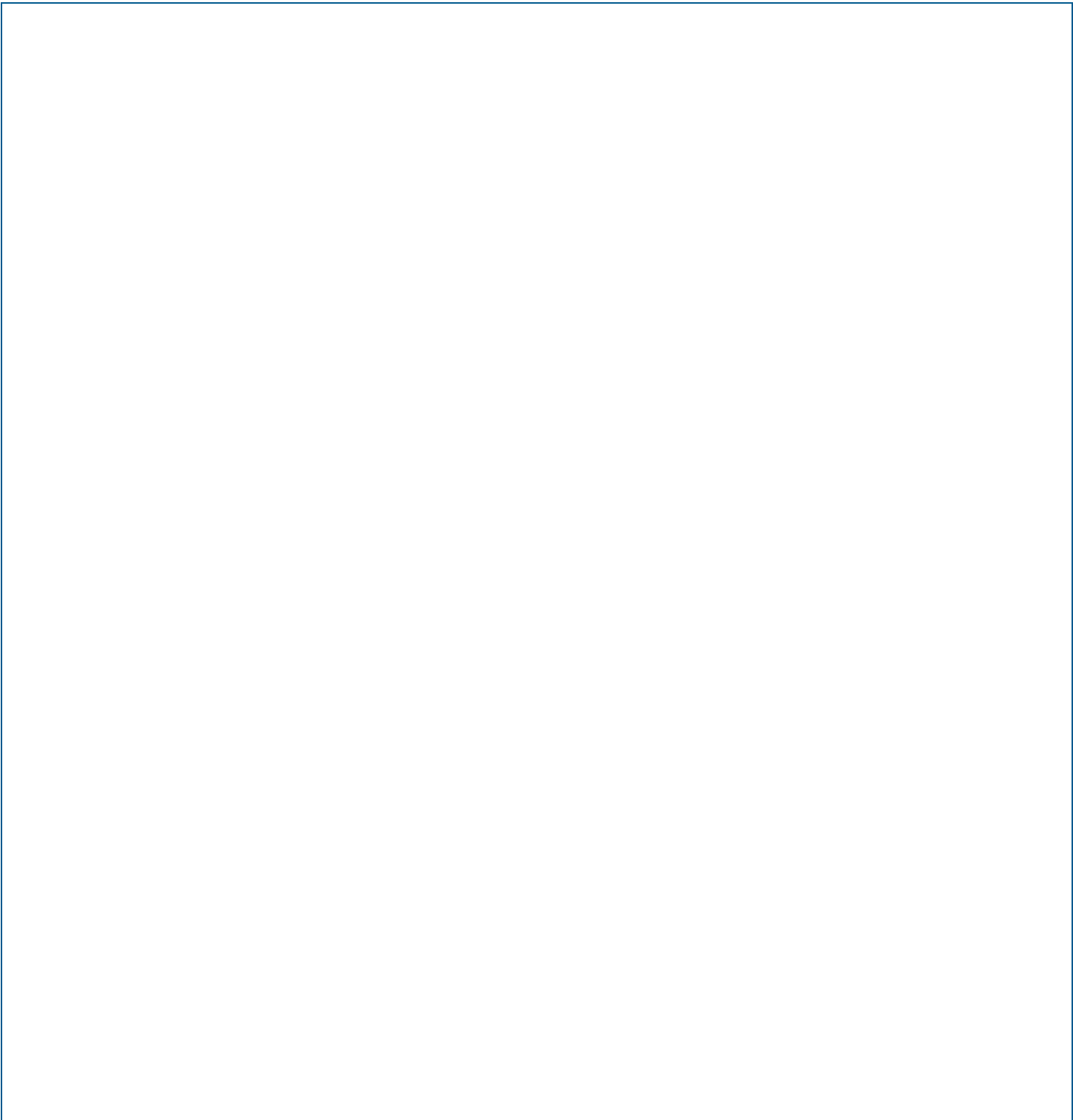
Think of it like this: **transmission networks** are like motorways, moving lots of electricity quickly over long distances. **Distribution networks** are like smaller roads, bringing electricity to your street and home.

Select the network type and then your region to see who manages the wires in your area.

Select their logo to visit the operator's website.

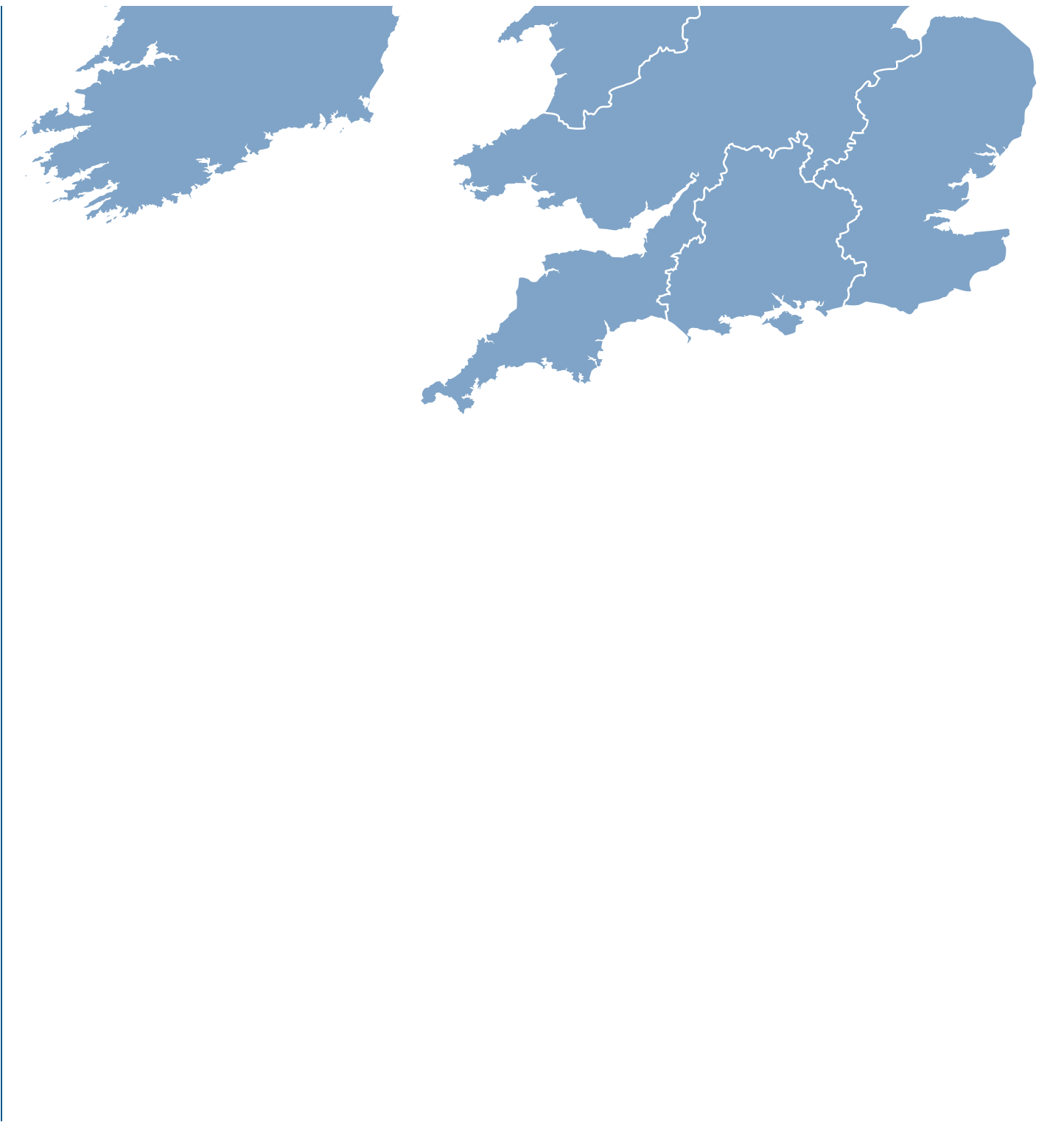
Electricity  
distribution  
operators

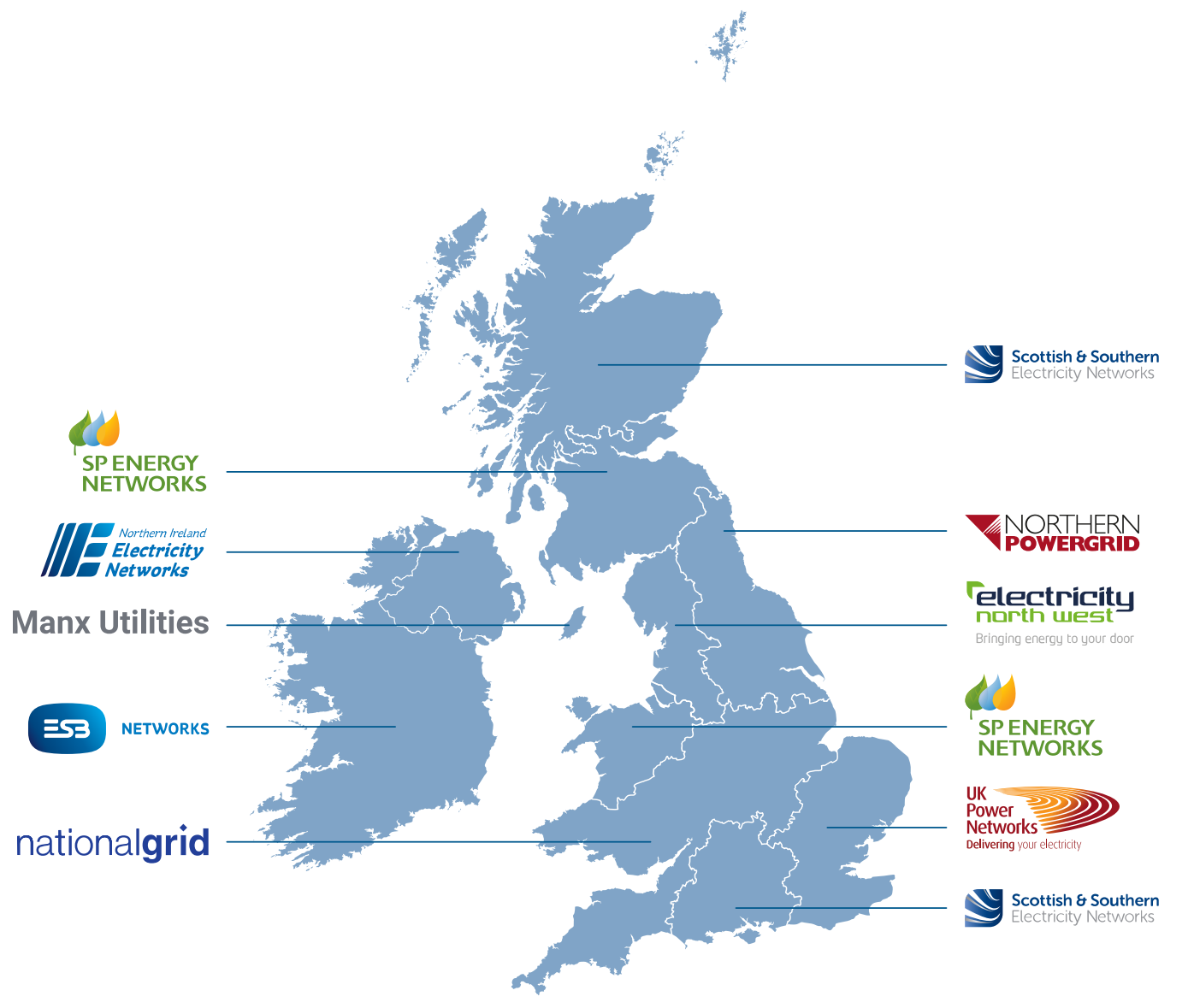
Electricity  
transmission  
operators



Tap your region and then the  
logo to visit their website.







# Independent Distribution Network Operators

Some homes and businesses are connected to **independent** distribution networks. An Independent Distribution Network Operator (IDNO) takes care of a smaller part of the electricity network. Imagine the whole electricity network as a big web connecting power stations and wind farms to homes. Regular network operators manage most of it, but an IDNO focuses on specific areas, ensuring that electricity flows smoothly in those particular places.



So, while the main network operators handle the overall "web", IDNOs specialise in making sure certain neighbourhoods or communities get the power they need without any hiccups. You can find a list of those operators below.

\*GTC is part of the BUUK Infrastructure Group and operates and maintains assets for its two IDNO licenses The Electricity Network Company Limited and Independent Power Networks Limited.

Eclipse Power Networks (https://eclipsepower.co.uk/)	Energy Assets Networks (https://www.energyassetsnetworks.co.uk/)	ESB Utilities Group (https://esb.co.uk/)	Forbury Assets Ltd (FAL) (SSE Enterprise) (https://www.sseenterprise.co.uk/products/forbury-assets-limited/)
Fulcrum (https://www.fulcrum.co.uk/)	GTC* (https://www.gtc-uk.co.uk/)	Harlaxton Energy Networks (http://www.harlaxtonenergynetworks.co.uk/)	Indigo Power (http://indigopower.co.uk/)
Last Mile Asset Management (https://lastmile-uk.com/)	Leep Utilities (https://www.leeputilities.co.uk/)	mua Group (https://www.muagroup.co.uk/)	UK Power Distribution (https://www.ukpowerdistribution.co.uk/)
Utility Assets (https://www.utilityassets.co.uk/)	Vattenfall (https://idno.vattenfall.co.uk/)		

## Find your network operator using your energy bill

The code on your electricity bill contains a 'Distributor ID' number. This can help you find which network operator looks after your connection. Remember, your network operator is not the same as your energy supplier.

Where to find the Distributor ID code 

What the Distributor ID code means 

## Frequently Asked Questions

How do I find my energy supplier? 

Who is my electricity distribution network operator?



What is a distribution network operator?







