



Guide Price £750,000 Freehold
3 bedroom semi-detached house

Beacon Road
Hither Green

Read all about it...

This appealing home offers a bright and well-proportioned layout that suits modern living. The property benefits from a good sense of space throughout, plenty of natural light, and a private garden, all set within a well-established residential area known for its convenience and community feel.

The ground floor is arranged in a practical and easy-to-live-in way. There is a useful study, ideal for home working or a quiet reading space, alongside a comfortable reception room for everyday relaxation. To the rear, the dining room/kitchen provides a sociable hub for the home, with space to cook, eat, and entertain. A ground-floor shower room adds welcome flexibility. Upstairs, the first floor offers three bedrooms and a family bathroom serves this floor.

The rear garden is a real bonus, offering a private outdoor space that's easy to maintain and ideal for summer evenings, gardening, or simply unwinding at the end of the day. It works well as an extension of the living space and suits a range of lifestyles.

Beacon Road is well placed for local shops, schools, and everyday amenities, with nearby parks providing welcome green space. Lewisham's excellent transport links are within easy reach, making this a practical option for commuters while still enjoying a strong neighbourhood atmosphere. Overall, this is a solid and versatile home that presents a great opportunity for first-time buyers, families, or anyone looking to put their own stamp on a property in a well-connected SE13 location.



2 BATHROOMS
OPEN PLAN KITCHEN/DINER
TOTAL AREA - 1068SQFT

3 BEDROOMS
GARDEN SPACE

Like what you see?

Call **020 8852 0026** or email us at hithergreen@stanfordstates.london
to arrange a viewing or request further information



GROUND FLOOR

Reception Room

3.81m x 3.38m (12' 6" x 11' 1")

Pendant light, double-glazed window, alcove space, fireplace, wood floor.

Study

4.33m x 2.40m (14' 2" x 7' 10")

Spotlights, double-glazed window, radiator, wood floor.

Dining Room

3.80m x 3.43m (12' 6" x 11' 3")

Pendant lights, double-glazed door and windows, alcove space, wood floor.

Kitchen

2.73m x 2.51m (8' 11" x 8' 3")

Pendant light, double-glazed window, half tile wall, matching wall and base units, integrated fridge, gas hob and oven, extractor fan, sink with mixer tap, wood floor.

Shower Room

4.67m x 1.30m (15' 4" x 4' 3")

Spotlights, walk-in shower with glass door and wall mounter shower head, splash back tile, ceramic sink unit with, mixer tap, toilet, wall-mounted heated towel rail, laminate floor.

FIRST FLOOR

Bedroom

2.12m x 1.67m (6' 11" x 5' 6")

Ceiling light, double-glazed window, radiator, carpet.

Bedroom

3.81m x 3.38m (12' 6" x 11' 1")

Pendant light, double-glazed window, fitted wardrobe and storage space, carpet.

Bedroom

3.80m x 3.38m (12' 6" x 11' 1")

Pendant light, double-glazed window, fitted wardrobe storage, carpet.

Bathroom

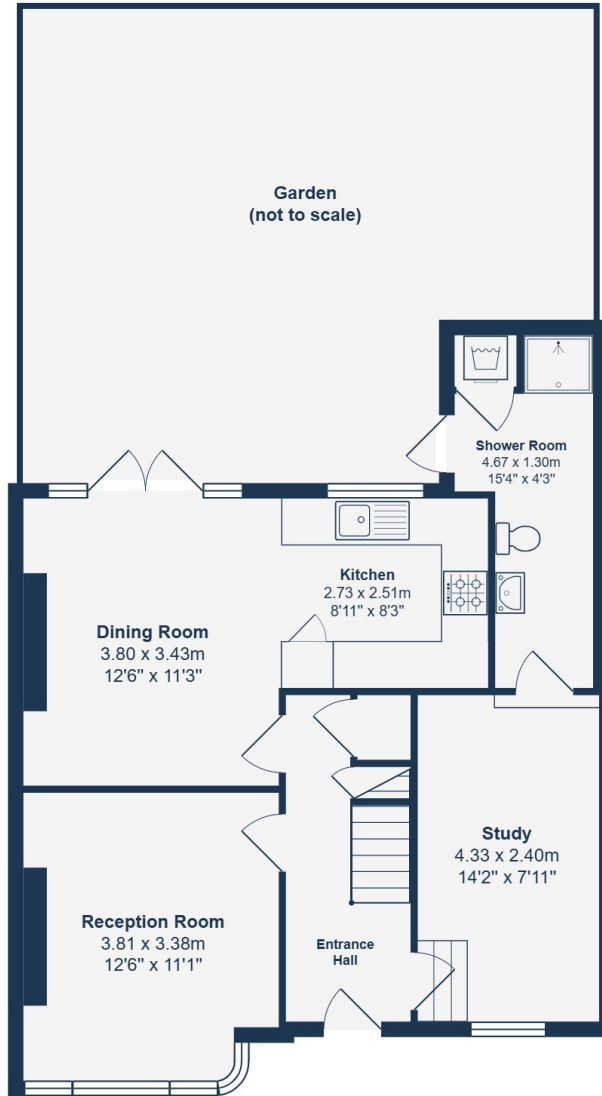
2.62m x 1.67m (8' 7" x 5' 6")

Ceiling light, half tile walls, double-glazed windows, toilet, wall-mounted sink basin with mixer tap, bath tub with glass divider and mixer tap, tile floor.

OUTSIDE

Garden

Patio area leading to concrete slabs with storage at the rear.



Ground Floor



First Floor

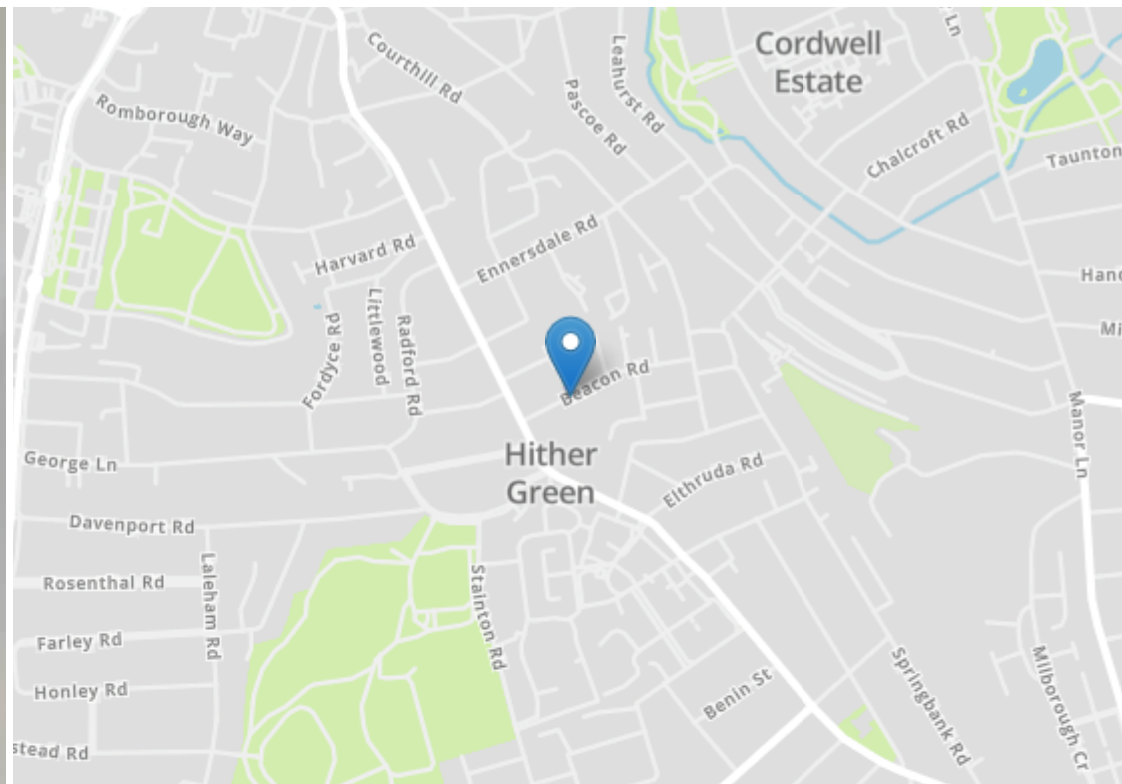
Total Area: 99.2 m² ... 1068 ft²

Drawn for Stanfords Sales & Lettings

This floorplan is for illustrative purposes only. Whilst every effort has been made to ensure the accuracy of the plan, the dimensions and total area are approximated only and should not be relied upon.







Energy Efficiency Rating		Current	Potential
Very energy efficient - lower running costs			
(92+)	A		
(81-91)	B		
(69-80)	C		79
(55-68)	D	65	
(39-54)	E		
(21-38)	F		
(1-20)	G		
Not energy efficient - higher running costs			
England, Scotland & Wales		EU Directive 2002/91/EC	



Robert Stanford Estates property particulars are produced in accordance with the Consumer Rights Act (2015) and should not be construed as a contract or offer. The contents of these property particulars are to provide a general illustration only and are inconsequential to any decisions to purchase a property. A potential buyer accepts that all representations made by these particulars are made in good faith on behalf of the seller and require verification by a buyers' legal and professional representatives prior to an exchange of contracts. We offer no guarantees for any structural component, service or appliance and while we make every effort to take accurate measurements and distances, they are illustrative only. Any reliance you place on information within these particulars is therefore strictly at your own risk.