

31 Walton Road

Folkestone
CT19 5QR

£230,000 FREEHOLD

FOR SALE WITH BURNAP + ABEL... Welcome to your new home on Walton Road in Folkestone! This charming 3 bed terraced house offers the perfect blend of modern living and traditional charm. Step inside to find a spacious open plan lounge/diner, ideal for entertaining guests or relaxing with loved ones. The modern kitchen is a chef's dream, featuring all the amenities you need to whip up delicious meals. Upstairs, you'll find a spacious master bedroom plus two cozy single bedrooms, providing plenty of space for the whole family. Outside, a peaceful courtyard garden awaits, perfect for enjoying your morning coffee or hosting al fresco dinners. Conveniently located within walking distance to Folkestone Central Train Station, commuting has never been easier. Don't miss out on this fantastic opportunity to call Walton Road home - schedule your viewing today!



Entrance Hall

Lounge

11' 10" x 10' 0" (3.61m x 3.05m)

Dining Room

13' 3" x 10' 3" (4.04m x 3.12m)

Kitchen

10' 2" x 6' 0" (3.10m x 1.83m)

First Floor Landing

Bedroom One

13' 6" x 9' 8" (4.11m x 2.95m)

Bathroom

7' 7" x 5' 1" (2.31m x 1.55m)

Bedroom Two

7' 7" x 6' 11" (2.31m x 2.11m)

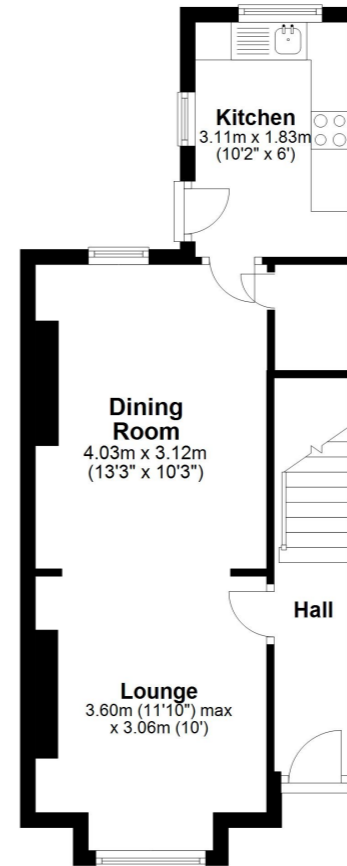
Bedroom Three

10' 7" x 6' 0" (3.23m x 1.83m)

Rear Garden

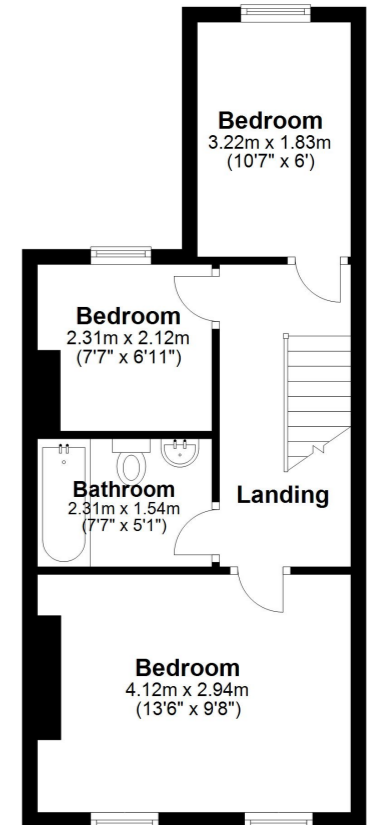
Ground Floor

Approx. 36.3 sq. metres (390.3 sq. feet)



First Floor

Approx. 34.7 sq. metres (373.3 sq. feet)



Total area: approx. 70.9 sq. metres (763.5 sq. feet)

Whilst every attempt has been made to ensure the accuracy of the floor plan contained here, measurements of doors, windows, rooms and any other items are approximate and no responsibility is taken for any error, omission or mis-statement. This plan is for illustrative purposes only and should be used as such by any prospective purchaser.
Plan produced using PlanUp.

