



Berrys Lane, St Helens. WA9.

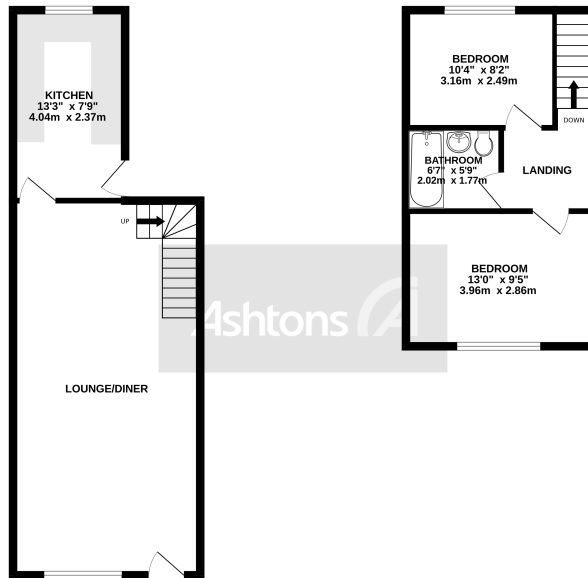
£60,000

Leasehold | Council Tax Band - A | Viewings Advised | No Chain | Perfect Buy To Let Investment Or
First Purchase | Two Double Bedroom Mid Terrace |



GROUND FLOOR
441 sq.ft. (41.0 sq.m.) approx.

FIRST FLOOR
303 sq.ft. (28.2 sq.m.) approx.



TOTAL FLOOR AREA - 745 sq.ft. (69.2 sq.m.) approx.

While every attempt has been made to ensure the accuracy of the floorplan contained herein, measurements of doors, windows, rooms and any other items are approximate and no responsibility is taken for any error, omission or mis-statement. This plan is for illustrative purposes only and should be used as a guide by any prospective purchaser. The services, systems and appliances shown here are not guaranteed and no guarantee as to their condition or reliability can be given. Made with Metropix (C)2021

Offered to the market with no onward chain is this two bed mid terraced property. Situated in a good location, close to local amenities, well-regarded schools and transport links. This is the perfect property for a first time buyer looking to get on to the property ladder or investment.

The property briefly comprises, large lounge thru diner and kitchen. To the first floor, there's two double bedrooms and a family bathroom.

Externally, there's a small garden to the front and a yard to the rear.



Contact your local office
to arrange a viewing:

Padgate: 01925 479334
Great Sankey: 01925 454300
Winwick: 01925 232146
Stockton Heath: 01925 453400
St.Helens: 01744 754120
Wigan: 01942 498862
Culcheth: 01925 764744
Ashton-In-Makerfield: 01942 364446
Newton-Le-Willows: 01925 907770
Commercial Office: 01925 907709
Lettings Head Office: 01925 873533
Financial Services: 01925 221234

Viewing Arrangements

Viewing is strictly by appointment only through
Ashtons Estate Agency.

Disclaimer Property Details

These particulars, whilst being believed to be accurate are set out as a general outline only for guidance and do not constitute any part of an offer or contract. Intending purchasers should not rely on them as statements of representation of fact, but must satisfy themselves by inspection or otherwise as to their accuracy. We have not carried out a detailed survey nor tested the services, appliances and specific furnishings. The measurements given are approximate.

No person in this firm's employment has the authority to make or give any representation or warranty in respect of the property.

All details, photographs and floorplans are the copyright of Ashtons Estate Agency.



How much you can borrow?
Speak to a mortgage expert in your local office.

Ashtons Financial Services

Ashtons.net rightmove

PrimeLocation.com Zoopla.co.uk

Ashtons