

Flat 5, 21 Eversley Park

Folkestone
CT20 3FE

£350,000 LEASEHOLD

FOR SALE WITH BURNAP + ABEL... Welcome to this luxurious 2 bedroom apartment in the sought after Eversley Park, Folkestone. Located within a private gated community, this home offers both security and exclusivity. Step inside to find a spacious lounge/diner, perfect for entertaining guests or relaxing after a long day. The kitchen is sleek and modern, with all the amenities you need to whip up delicious meals. The master bedroom boasts an en-suite bathroom, providing convenience and privacy. Located just a stone's throw away from Folkestone West Station, commuting is a breeze. And with outstanding schools nearby, your children will have access to top-notch education. Don't worry about parking - this property comes with its own designated parking space. Don't miss out on the opportunity to make this stunning apartment your new home. Book your viewing today!



Entrance Hall

Lounge/Dining Room

21' 1" x 19' 5" (6.43m x 5.92m)

Kitchen

13' 3" x 11' 11" (4.04m x 3.63m)

Bathroom

11' 11" x 6' 9" (3.63m x 2.06m)

Bedroom One

18' 1" x 14' 3" (5.51m x 4.34m)

En-Suite

7' 1" x 6' 6" (2.16m x 1.98m)

Bedroom Two

13' 4" x 11' 11" (4.06m x 3.63m)

Parking

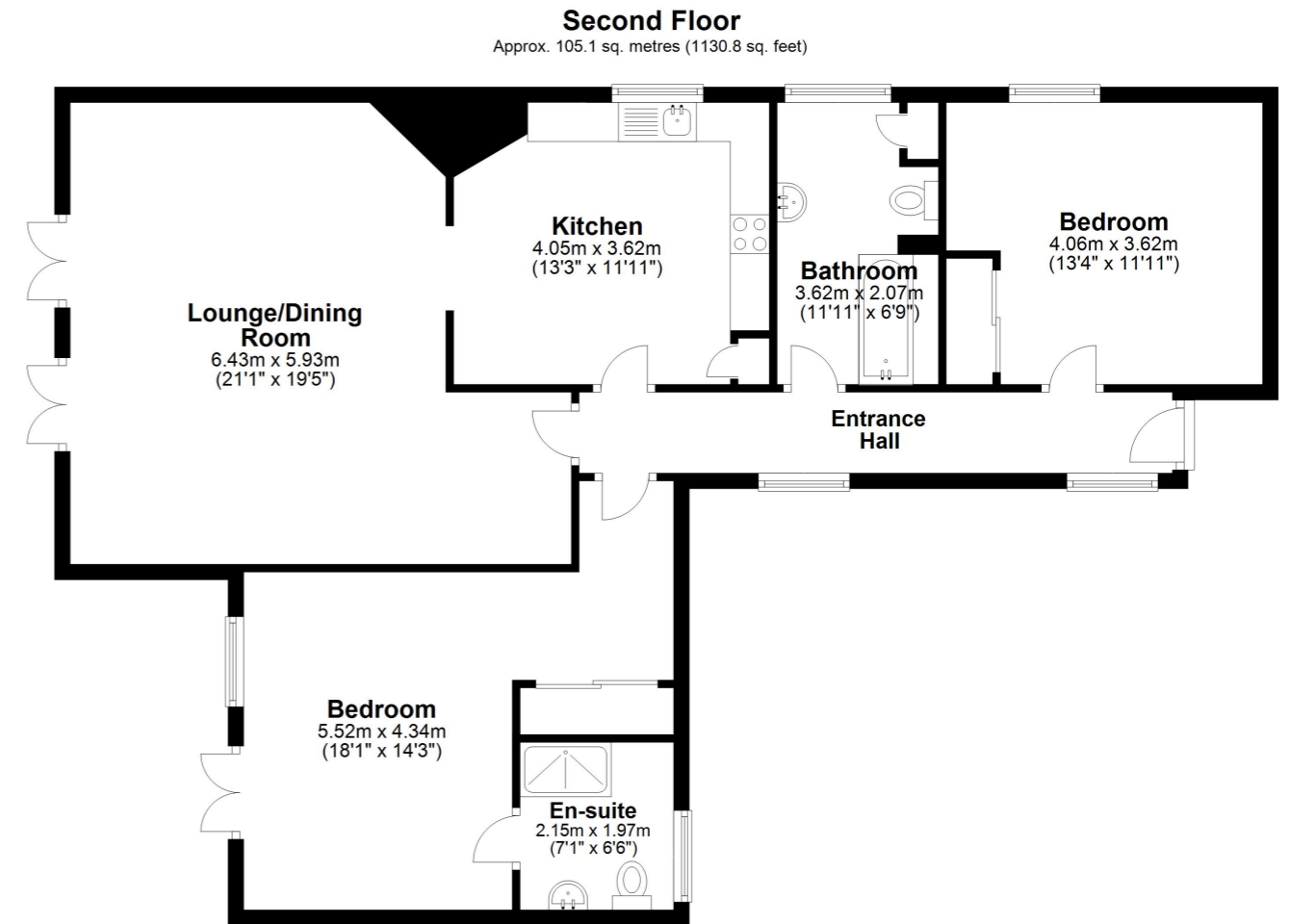
Lease + Charges

Lease - 139 Year Lease

Service charge - £3298

Ground Rent - £250

Insurance - £462



Whilst every attempt has been made to ensure the accuracy of the floor plan contained here, measurements of doors, windows, rooms and any other items are approximate and no responsibility is taken for any error, omission or mis-statement. This plan is for illustrative purposes only and should be used as such by any prospective purchaser.
Plan produced using PlanUp.

