

The top photograph captures a bright and airy living room. A light blue sectional sofa is positioned against a sage green accent wall, which is decorated with a round clock and a small lamp. In front of the sofa sits a low, light-colored wooden coffee table. To the left, a wooden sideboard holds various items, including a lamp and framed pictures. A dining area with a wooden table and chairs is visible in the background. The floor is made of light-colored wood. The bottom photograph shows a modern kitchen with white cabinetry and a black countertop. A large window at the back provides a view of the outdoors. The kitchen features a built-in oven, a dishwasher, and a washing machine. The floor is covered with a patterned rug, and the lighting is warm and inviting.

<https://www.burnapandabel.co.>

Lounge/Dining Room

16' 11" x 10' 9" (5.16m x 3.28m)

Kitchen

9' 3" x 8' 4" (2.82m x 2.54m)

Bedroom One

14' 8" x 8' 0" (4.47m x 2.44m)

Bedroom Two

11' 2" x 6' 11" (3.40m x 2.11m)

Bathroom

7' 8" x 6' 3" (2.34m x 1.91m)

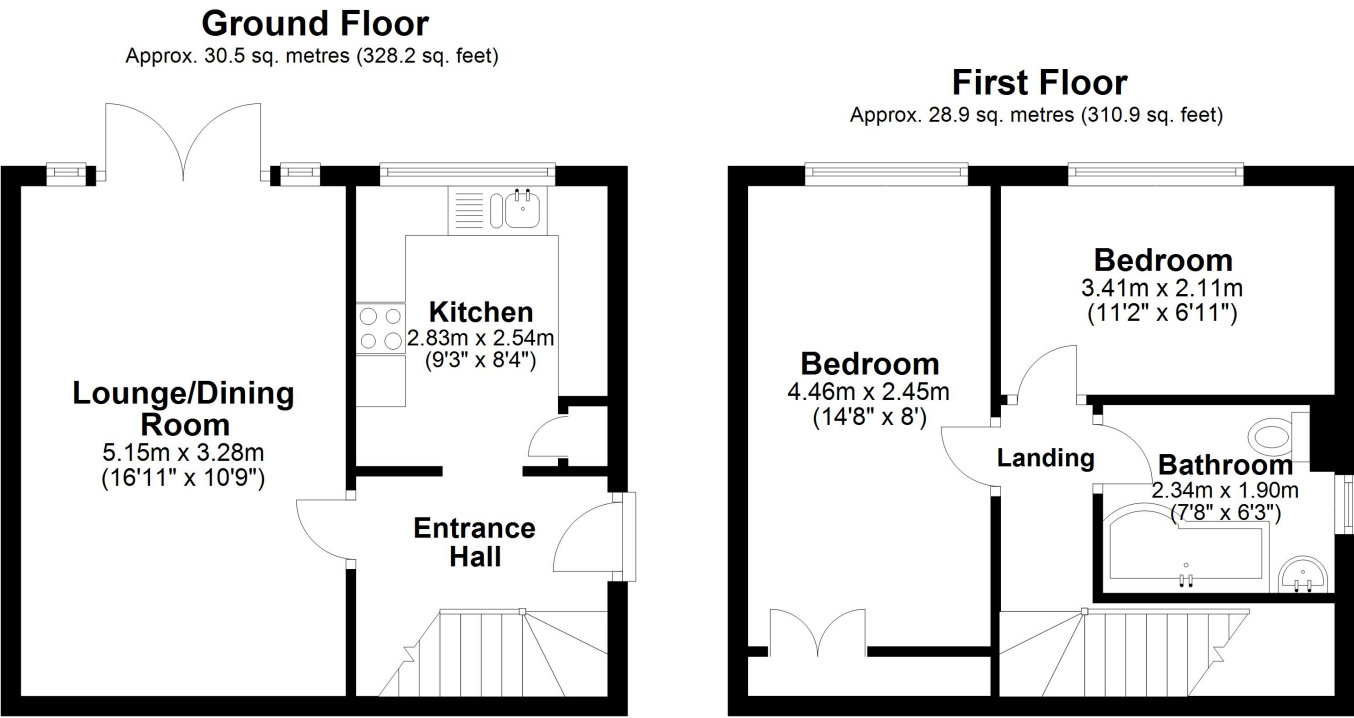
Garden

Off Street Parking

Parking for two cars.

Area Information

This property is situated in an ideal location in the popular Castle Ward area of town. It is just a short walk into town with St James shopping area offering a range of shops and restaurants. Close by is the sea front and the main-line Priory railway station. From Priory you can catch the fast link train to London St Pancras. There are good access routes to the A2/M2 to Canterbury and London. Within the area is a good range of primary and secondary schools, together with the Dover Boys' and Girls' Grammar Schools.



Total area: approx. 59.4 sq. metres (639.0 sq. feet)

Whilst every attempt has been made to ensure the accuracy of the floor plan contained here, measurements of doors, windows, rooms and any other items are approximate and no responsibility is taken for any error, omission or mis-statement. This plan is for illustrative purposes only and should be used as such by any prospective purchaser.

Plan produced using PlanUp.

