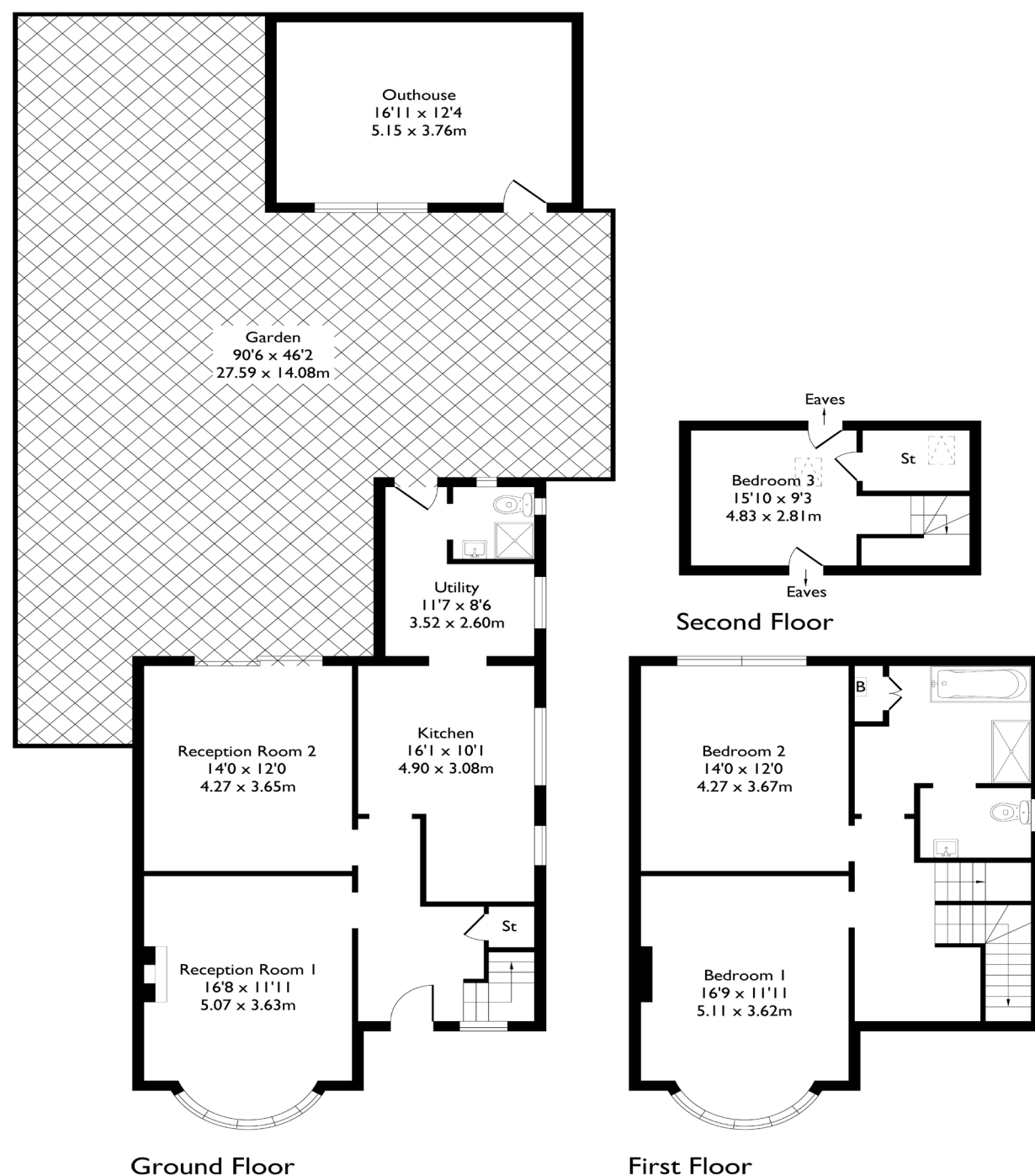
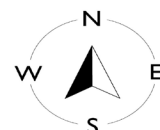


## Highland Avenue, London, W7

Approximate Floor Area = 155.1 sq m / 1670 sq ft



### 3 BEDROOM HOUSE

## Highland Avenue, W7

£850,000

Welcome to this detached three-bedroom, two-bathroom property in the heart of Hanwell — a fantastic opportunity for developers, investors, or anyone looking for a full refurbishment project.

This property comes with two titles; Land and Property. The home requires modernisation throughout and offers a great plot which has excellent potential to extend, subject to the necessary planning permissions.

### FEATURES

- Three Bedrooms
- Finance Options Available
- Separate Kitchen/ Living Space
- Scope To Extend/ Develop (STPP)
- Mayfield Primary School
- Hanwell Station (Elizabeth Line)
- EPC Rating E





3 BEDROOM HOUSE

## Highland Avenue, W7

Ideally located close to Greenford Avenue amenities, the property is also just a 15-minute walk to Hanwell Station (Elizabeth Line), providing fast links into central London.

It sits within the catchment for Mayfield Primary School and offers convenient access to the A40 for those commuting by car. EPC Rating E.

