



8 Kingfisher Flag Hill, Great Bentley, Colchester. CO7 8RF

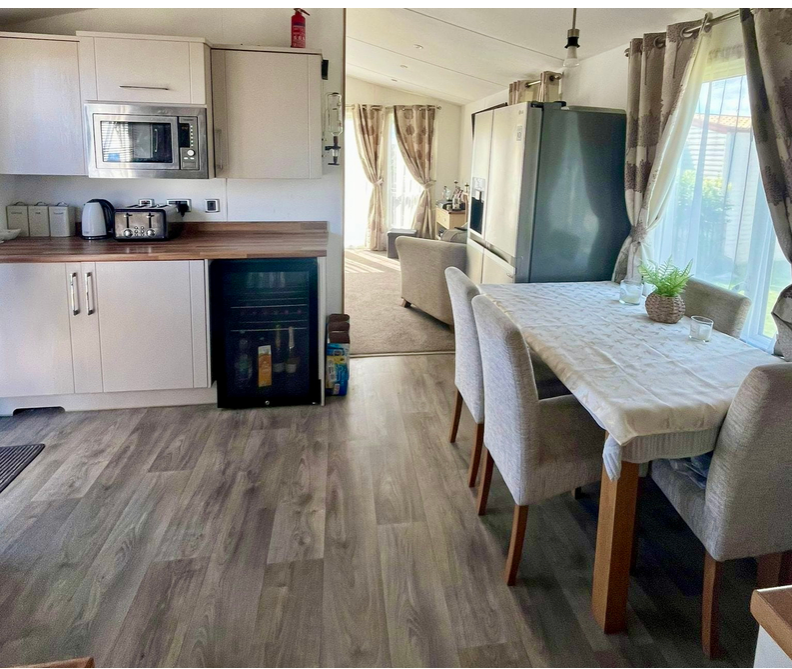
- 38 x 12FT Fully Furnished Lodge
- Stunning Lake Views
- Two Bedrooms
- 11 Month Holiday Park
- Club House With Bar & Function Room
- Integrated Kitchen Appliances
- Double Glazing & Central Heating
- Onsite Facilities Inc Heated Indoor Pool, Gyms, Sauna & Spa
- Integrated Appliances
- Decking Included



PROPERTY DESCRIPTION

On one of our stunning lake plots

This holiday home has a lovely spacious kitchen with under-counter lighting and integrated appliances. It has a warm neutral decor throughout. The lounge feels homely, with a free standing L-shaped sofa and big comfy armchair that will soon become someone's favourite. The cashmere kitchen cupboards topped with oak effect work surfaces are stylish and practical. With cupboards on three sides, including wall mounted display units, you are never short of space and places to cook up family meals. The master bedroom has a king size bed, walk-in wardrobe, en-suite, dressing table and feature over-bed storage. The second bedroom has a designer feel too and the added tiling effect to the master shower room with its huge shower just ticks all the boxes for those looking to live in a unique home.



ROOM DESCRIPTIONS

WILLERBY WINCHESTER

- 38ft x 12ft
- 2 Bed
- 2 Bathrooms
- Walk In Wardrobe
- Decking
- Garden
- Driveway
- Double glazed
- Central heating

We are a 11 MONTH
HOLIDAY PARK -

Onsite we have to offer you -

- Heated Indoor Pool
- 2 Gyms, Sauna and Spa
- Clubhouse with bar
- Function Room
- Lakes

Includes 2025 Site Fees!





Frinton-On-Sea
148, Pole Barn Lane, Frinton-on-Sea, CO13 9NG
01255 852929
sales@mymovingplaces.com