

# elevation

lettings | est. 1992

9 Whittle Court,  
Knowlhill, Milton Keynes, MK5 8FT

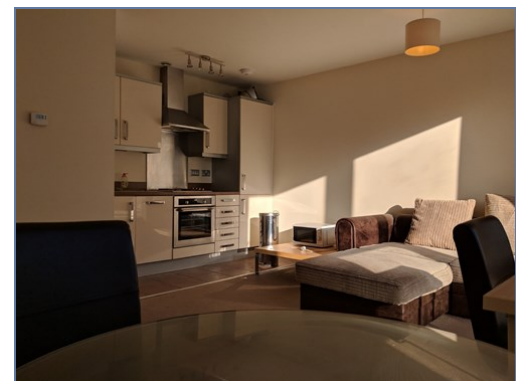
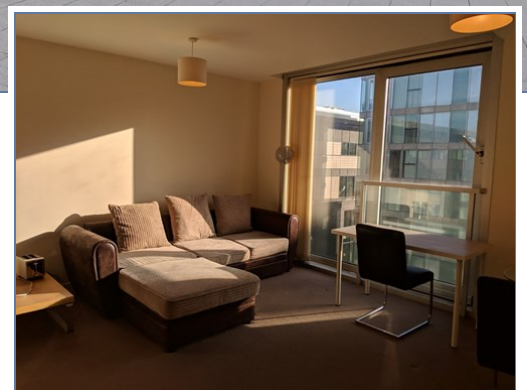
Tel: 01908 231 551  
mail@elevationstateagents.com



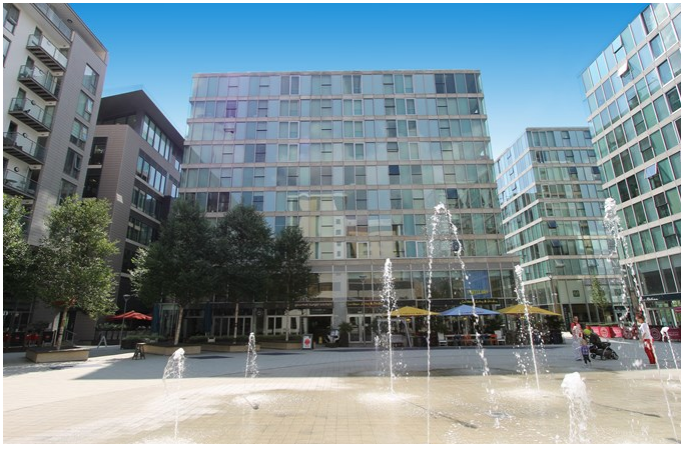
**53 Staten House, Rillaton Walk, MILTON  
KEYNES, Buckinghamshire, MK9 2BX**

**£750 pcm**

- Studio Apartment
- Close to CMK station
- Excellent Shopping
- EPC Rating B



See our full selection of properties online at [www.elevationstateagents.com](http://www.elevationstateagents.com)

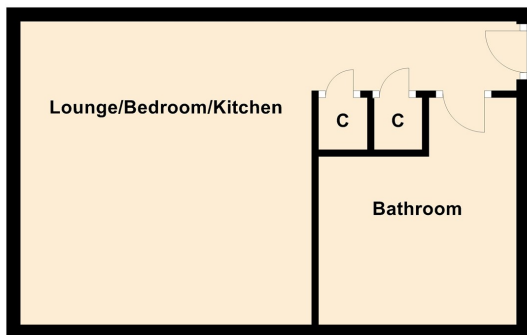


## Disclaimer

Whilst we have endeavoured to prepare our sales particulars accurately none of the services, appliances or equipment have been tested. A buyer should satisfy themselves on such matters prior to purchase. Any measurements or distances mentioned in these particulars are for guide reference only. If such particulars are fundamental to a purchase, buyers should rely on their own enquiries. All enquiries should be directed to Elevation Estate Agents in the first instance.

Energy Efficiency Rating		Environmental Impact (CO <sub>2</sub> ) Rating	
Current	Potential	Current	Potential
<p>Very energy efficient - lower running costs</p> <p>(92 to 100) <b>A</b></p> <p>(81 to 91) <b>B</b></p> <p>(69 to 80) <b>C</b></p> <p>(56 to 68) <b>D</b></p> <p>(39 to 54) <b>E</b></p> <p>(21 to 38) <b>F</b></p> <p>(1 to 20) <b>G</b></p> <p>Not energy efficient - higher running costs</p>		<p>Very environmentally friendly - lower CO<sub>2</sub> emissions</p> <p>(92 to 100) <b>A</b></p> <p>(81 to 91) <b>B</b></p> <p>(69 to 80) <b>C</b></p> <p>(56 to 68) <b>D</b></p> <p>(39 to 54) <b>E</b></p> <p>(21 to 38) <b>F</b></p> <p>(1 to 20) <b>G</b></p> <p>Not environmentally friendly - higher CO<sub>2</sub> emissions</p>	
	87	88	
		96	97
<p>EU Directive 2002/91/EC</p> <p>England, Wales &amp; N.Ireland</p>		<p>EU Directive 2002/91/EC</p> <p>England, Wales &amp; N.Ireland</p>	

## Ground Floor



Floor plans are for layout purposes only  
Plan produced using PlanUp.