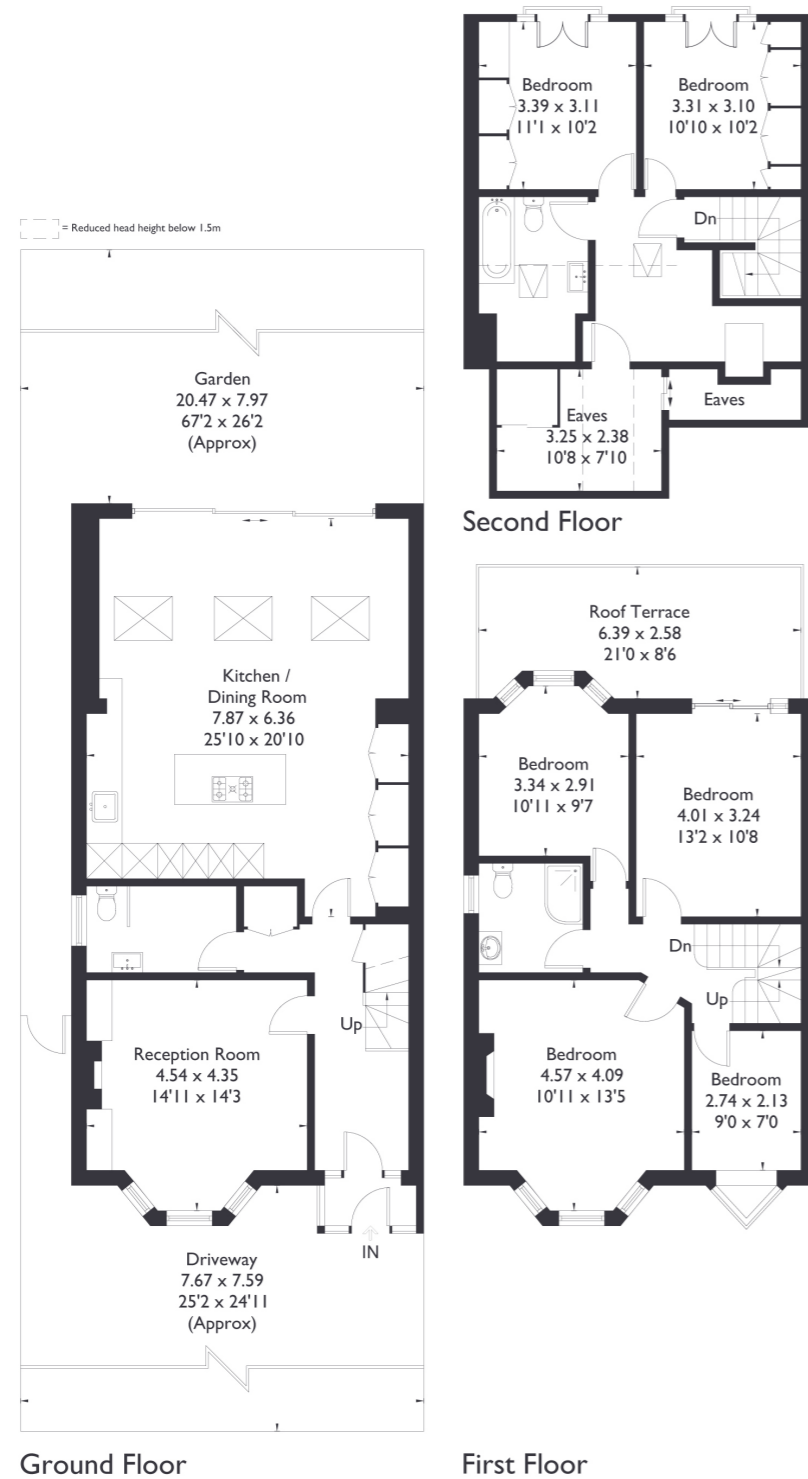


**Elers Road London, W13**

Approximate Floor Area = 198.2 sq m / 2133 sq ft



**6 BEDROOM HOUSE**

**Elers Road, W13**

**GUIDE PRICE £2,000,000 - £2,250,000**

Welcome to this stunning six bedroom home on the highly sought after Elers Road, just seconds from Northfield's amenities and a mere five minute walk to Northfields Station. This beautiful property opens with a spacious, welcoming reception area, complemented by a convenient utility room. Moving through, you'll find a breath taking open-plan kitchen, living, and dining area with sliding patio doors that provide sweeping views of the landscaped garden complete with patios, electric awnings, and the picturesque Lammas Park beyond.

**FEATURES**

- Six Bedrooms
- Two Bathrooms/ Downstairs W/C
- Open Plan Kitchen/Living
- Landscaped Circa 75 ft Garden
- First Floor Veranda
- Views of Lammas Park
- Driveway Parking
- EPC Rating D



6 BEDROOM HOUSE

## Elers Road, W13

The first floor features four generous bedrooms, a stylish shower room, elegant bay windows, and a private terrace overlooking the serene landscape.

Ascending to the top floor you'll find two additional double bedrooms each boasting charming Juliette balconies, along with a well appointed bathroom.

EPC Rating D.

