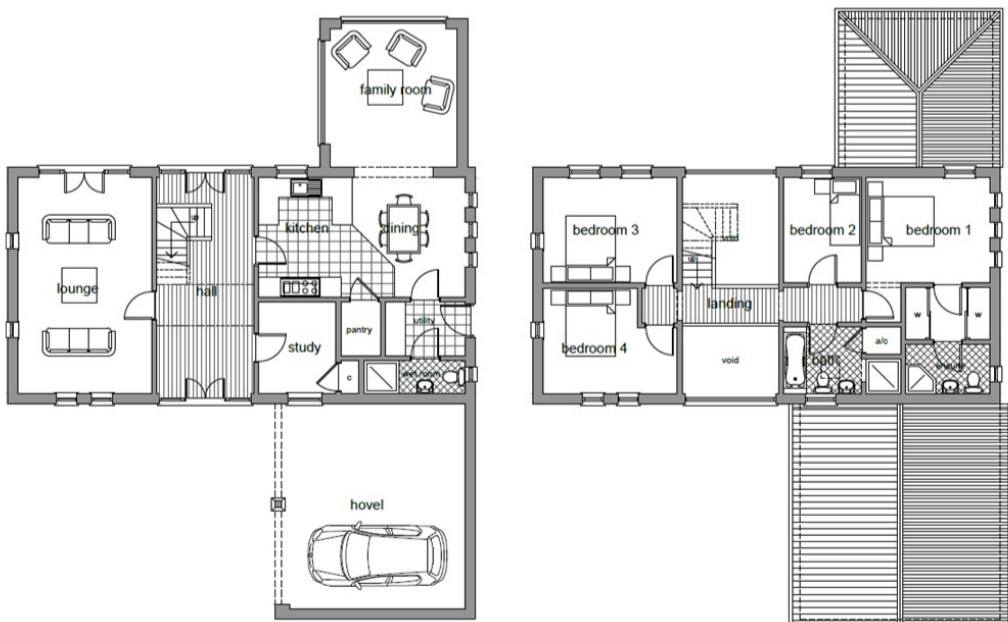




SHEPEAU STOW

£595,000



*** STUNNING BRAND NEW EXECUTIVE DETACHED HOUSE *** "Ready for occupation September 2023, this four double bedroom detached house being built in the Hamlet of Shepeau Stow will be approximately 2,091 square feet in size. The ground floor of the property will feature a generous featured glazed entrance hallway. The principle bedroom features an en suite and dressing room. Furthermore, the home will have an air source heat pump and underfloor heating to the ground floor. Externally there will be a double car port and an electric car charging point. EPC currently unavailable."