



- Spectacular Two Bedroom Duplex Apartment
- Forming Part Of This Stunning Victorian Conversion
- Two Double Bedrooms
- Master With Walk-Through Dressing Room
- Fabulous Open Plan Living/Dining/Kitchen Space
- French Doors Opening To Large Private Roof Terrace
- Share of Freehold
- Help To Buy Available
- 10 Year New Home Warranty

Plot Two, The Old Court House, Trinity Street, Halstead, Essex. CO9 1JQ.

HELP TO BUY AVAILABLE. GUIDE PRICE £240,000 - £250,000 set in the heart of Halstead Town Centre, with attractive views directly over Holy Trinity Church. With direct access into its own private entrance hall, the property has been designed and finished to a truly exceptional standard and with superb attention to detail, creating an array of stylish and extremely spacious accommodation over two levels totalling over 915 square feet, with the rare benefit of a large private roof terrace.



Outside there is parking to the front, whilst delightful, South facing communal gardens lie to the rear with beautifully detailed landscaping.

The Old Court House as previously mentioned is a sympathetic conversion of this magnificent Victorian building, creating a total of just five new dwellings comprising of apartments, a mews house, a detached coach house and a duplex with its very own private roof terrace - All completely unique and special in their design.

Now ready for occupation these spectacular properties are being offered Share Of Freehold, with a full 10 year new home warranty and are available on the Help To Buy Scheme. Contact us now to arrange your appointment to view.

Property Details.

Ground Floor

Reception Hall

Luxury Moduleo flooring, electric radiator, inset LED spotlights, staircase to first floor with storage/study space under.

First Floor

Galleried Landing



Inset LED spotlights, video entry system, large walk in utility cupboard, doors to:

Master Bedroom



11' 7" x 9' 0" (3.53m x 2.74m) Fitted with luxury carpets, with electric radiator, double glazed window to side with views over Holy Trinity Church, T.V point, door to:

Dressing Room

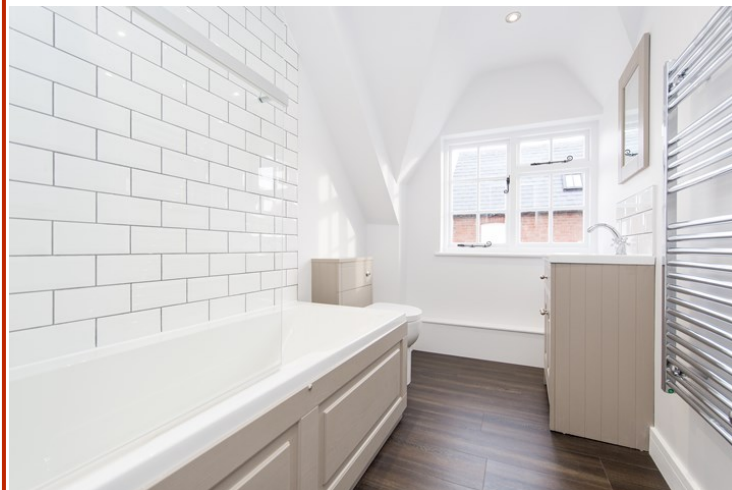
Fitted with luxury carpets, with electric radiator, inset LED spotlights, fitted shelving and clothes rails, power points, restored window to side.

Bedroom Two



12' 0" x 9' 0" (3.66m x 2.74m) Fitted with luxury carpets, electric radiator, restored window to rear, built in wardrobe.

Bathroom



Luxury Moduleo flooring, chrome heated towel rail, luxury Heritage style suite comprising of low level WC, vanity hand wash basin and panel bath with fully tiled surround, drench shower and additional shower attachment over, restored window to rear, inset LED spotlights, extractor fan.

Open Plan Kitchen/Dining & Living Space