



East Street





## East Street Worcester

Offers Over £200,000

Positioned within the Arboretum is this three bedroom period home offering fantastic access to the city centre and the local amenities it has to offer as well as Worcester Foregate Street train station. The property comprises entrance hall, two reception rooms, kitchen, cellar, three bedrooms and a family bathroom to the first floor. Residents on street permit parking is available. A viewing is highly advised.

### We've Noticed

- **Period terrace home**
- **Two reception rooms**
- **Three bedrooms**
- **Residents permit parking**
- **Cellar**





## Entrance

Through front entrance door into hall with doors into reception rooms and stairs to first floor.

## Front Reception Room

A good size room with front aspect double glazed window, radiator and sliding glazed doors opening into the rear reception room.

## Rear Reception Room

With rear aspect double glazed window, radiator and door leading to kitchen and with door down to cellar.

## Kitchen

With side and rear aspect double glazed windows, matching wall and base units with work surfaces over, stainless steel sink and drainer with mixer tap over. built-in dishwasher, oven and gas hob with cooker hood over, door to rear garden.

## First Floor Landing

With doors into bedrooms one, two, three and bathroom.

## Bedroom 1

With front aspect double glazed window and radiator.

## Bedroom 2

With rear aspect double glazed window and radiator.

## Bedroom 3

With rear aspect double glazed window and radiator.

## Bathroom

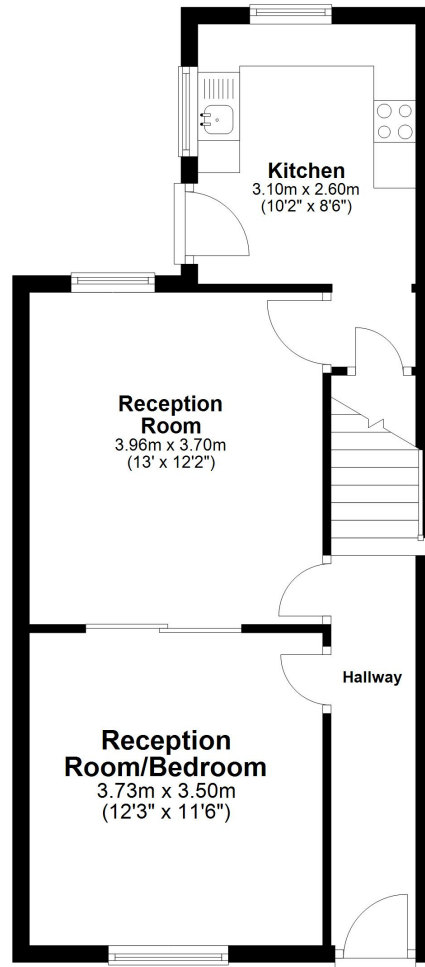
With rear aspect double glazed window, WC, wash hand basin and bath with shower over.

## Outside

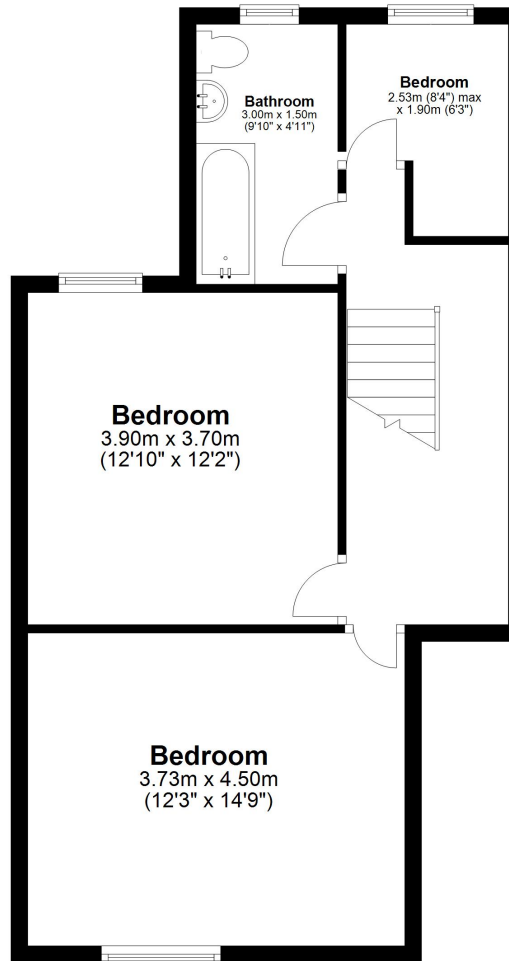
The front of the property is approached via a pathway to entrance door. To the rear is a low maintenance garden with fence boundaries to sides and rear.



## Ground Floor



## First Floor



46 Foregate Street, Worcester WR1 1EE

Tel: 01905 723545 info@hillsestateagents.co.uk

[www.hillsestateagents.co.uk](http://www.hillsestateagents.co.uk)

These particulars, whilst believed to be accurate are set out as a general outline only for guidance and do not constitute any part of an offer or contract. Intending purchasers should not rely on them as statements or representation of fact, but must satisfy themselves by inspection or otherwise as to their accuracy. We have not carried out a detailed survey nor tested the services, appliances and specific fittings. Room sizes should not be relied upon for carpets and furnishings. The measurements given are approximate. No person in this firm's employment has the authority to make or give any representation or warranty in respect of the property.

