

FOR SALE

Hatfield Road,
Bedford Park borders, W4

Terraced House
Bedford Park borders

£1,450,000 fh

3  3  1 



**horton
andgarton**

SALES / LETTINGS / PROPERTY MANAGEMENT

hortonandgarton.co.uk | Sales 020 3989 6464 | Lettings 020 3989 5454
161 Chiswick High Road, London, W4 2DT



FOR SALE

Hatfield Road,
Bedford Park borders, W4

Terraced House
Bedford Park borders

£1,450,000 fh

3  3  1 



**horton
andgarton**

SALES / LETTINGS / PROPERTY MANAGEMENT

hortonandgarton.co.uk | Sales 020 3989 6464 | Lettings 020 3989 5454
161 Chiswick High Road, London, W4 2DT



FOR SALE

Hatfield Road,
Bedford Park borders, W4

Terraced House
Bedford Park borders

£1,450,000 fh

3  3  1 

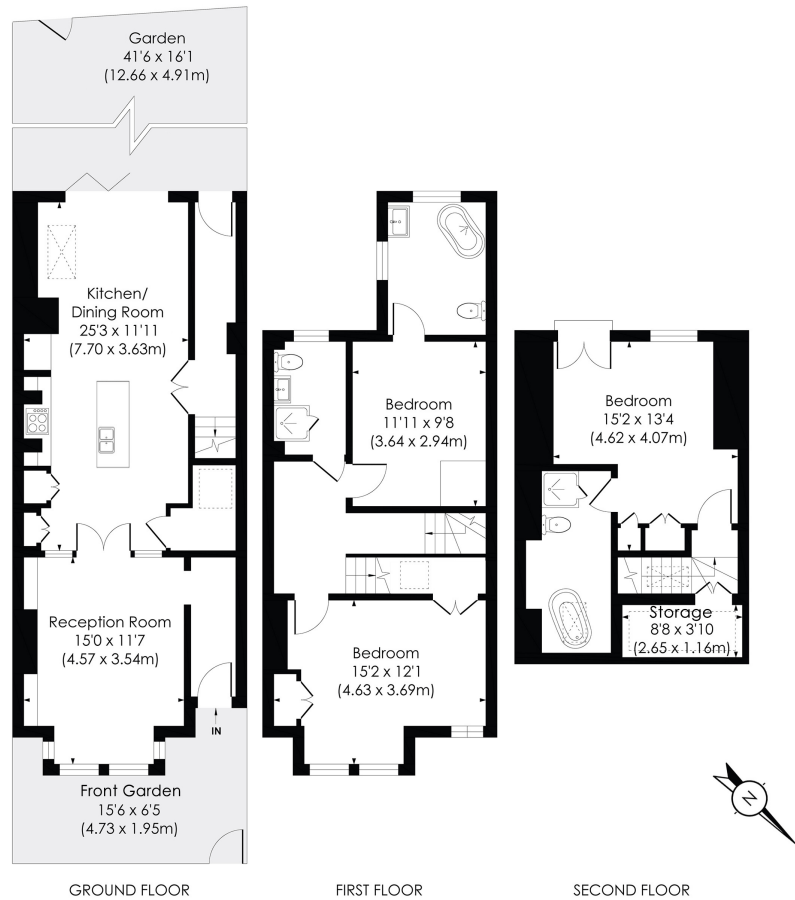


**horton
andgarton**

SALES / LETTINGS / PROPERTY MANAGEMENT

hortonandgarton.co.uk | Sales 020 3989 6464 | Lettings 020 3989 5454
161 Chiswick High Road, London, W4 2DT





HATFIELD ROAD, W4

Approx. Gross Internal Floor Area

1427 Sq' / 132.53 SqM (Incl. Reduced Height)

1394 Sq' / 129.46 SqM (Excl. Reduced Height)



This floor plan has been prepared for the purpose of illustration only in accordance with the latest RICS code of measuring practice and is not to scale. All measurements and areas are approximate and whilst every effort has been made to ensure the accuracy of the plan contained here, no responsibility is taken for any error, omission or misstatement.



Edwardian Family home | Three bedrooms - Three bathrooms | Air Conditioning throughout | South facing garden | EPC rating C | Bedford Park borders



hortonandgarton.co.uk

Sales 020 3989 6464

Lettings 020 3989 5454

161 Chiswick High Road, London, W4 2DT