

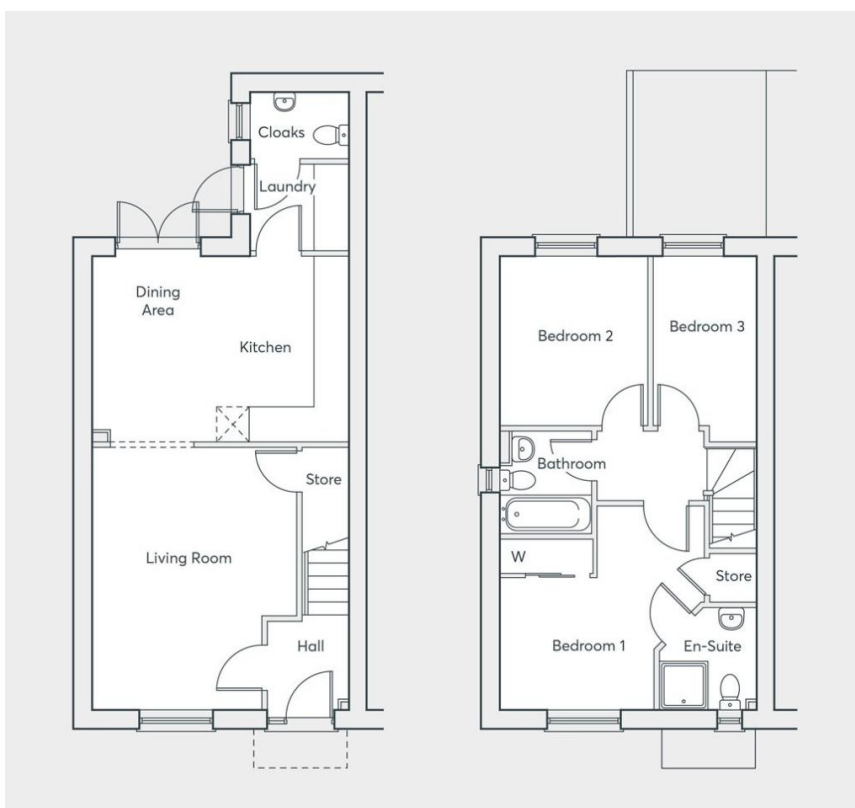


*54 Drewry Grove, Newton-le-Willows, Merseyside.
WA12 8AW.
£245,000*



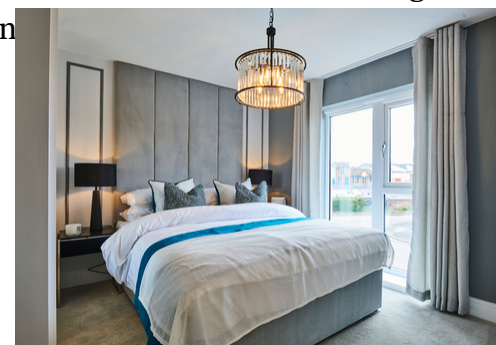
10 year New Home Warranty | Modern Open-Plan Living | Kitchen/Dining Room | Three Bedrooms |
En-Suite and Fitted Wardrobes To Master Bedroom | Off-Road Parking | Cloakroom/WC | £5k Towards
Deposit & Flooring | Freehold | EPC:B |





Ashtons Estate Agency in Partnership with St Modwen Homes are pleased to announce Tayleur Leas. This development is coming to the end and this is the FINAL Houghton home available. Don't miss out!

The Houghton is a spacious three-bedroom mid-terrace comprising hall, front facing living room, open plan and spacious dining/modern fitted kitchen with French patio doors leading to rear garden, laundry room and w.c. First floor landing, master bedroom with en-suite and fitted wardrobes, bedrooms two & three, three-piece bathroom suite. Externally have enclosed rear garden with driveway parking to front. Further benefits include UPVC double glazing, combi boiler with gas central heating. As a new build, will come as standard 10-year New Home Warranty. Help to Buy, Assisted Move and Part Exchange



Contact your local office to arrange a viewing:

- Padgate:** 01925 479334
- Great Sankey:** 01925 454300
- Winwick:** 01925 232146
- Stockton Heath:** 01925 453400
- St.Helens:** 01744 754120
- Wigan:** 01942 498862
- Culcheth:** 01925 764744
- Ashton-In-Makerfield:** 01942 364446
- Newton-Le-Willows:** 01925 907770
- Commercial Office:** 01925 907709
- Lettings Head Office:** 01925 873533
- Financial Services:** 01925 221234

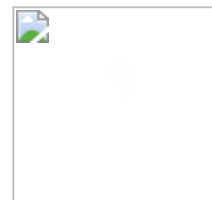
Viewing Arrangements

Viewing is strictly by appointment only through Ashtons Estate Agency.

Disclaimer Property Details

These particulars, whilst being believed to be accurate are set out as a general outline only for guidance and do not constitute any part of an offer or contract. Intending purchasers should not rely on them as statements of representation of fact, but must satisfy themselves by inspection or otherwise as to their accuracy. We have not carried out a detailed survey nor tested the services, appliances and specific furnishings. The measurements given are approximate. No person in this firm's employment has the authority to make or give any representation or warranty in respect of the property.

All details, photographs and floorplans are the copyright of Ashtons Estate Agency.



How much you can borrow?
Speak to a mortgage expert in your local office.

Ashtons Financial Services

Ashtons.net rightmove

PrimeLocation.com Zoopla.co.uk

