



9 Whittle Court,  
Knowlhill, Milton Keynes, MK5 8FT

Tel: 01908 231 551  
mail@elevationstateagents.com



**1 Denton Drive, Hanslope, Milton Keynes,  
Buckinghamshire, MK19 7GB**

**£800,000 Freehold**

- Triple Garage
- Five Double Bedrooms
- Underfloor heating throughout the ground floor
- Detached family home
- Ofsted "Outstanding" local school
- Premium specification
- Eco-friendly development
- Electric charge point
- Air source heat pumps by Daikin
- Overlooking green
- EPC Rating



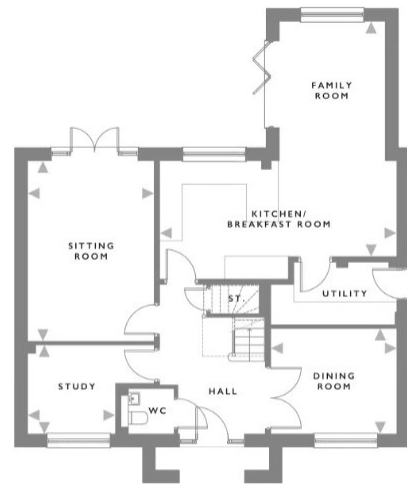
See our full selection of properties online at [www.elevationstateagents.com](http://www.elevationstateagents.com)





## Disclaimer

Whilst we have endeavoured to prepare our sales particulars accurately none of the services, appliances or equipment have been tested. A buyer should satisfy themselves on such matters prior to purchase. Any measurements or distances mentioned in these particulars are for guide reference only. If such particulars are fundamental to a purchase, buyers should rely on their own enquiries. All enquiries should be directed to Elevation Estate Agents in the first instance.



### GROUND FLOOR

Sitting Room	5.10m x 3.57m	16'9" x 11'8"
Kitchen/Family/Breakfast Room	6.65m x 6.7m	21'9" x 21'11"
Study	2.52m x 2.48m	8'3" x 8'2"
Dining Room	2.99m x 3.56m	9'9" x 11'8"