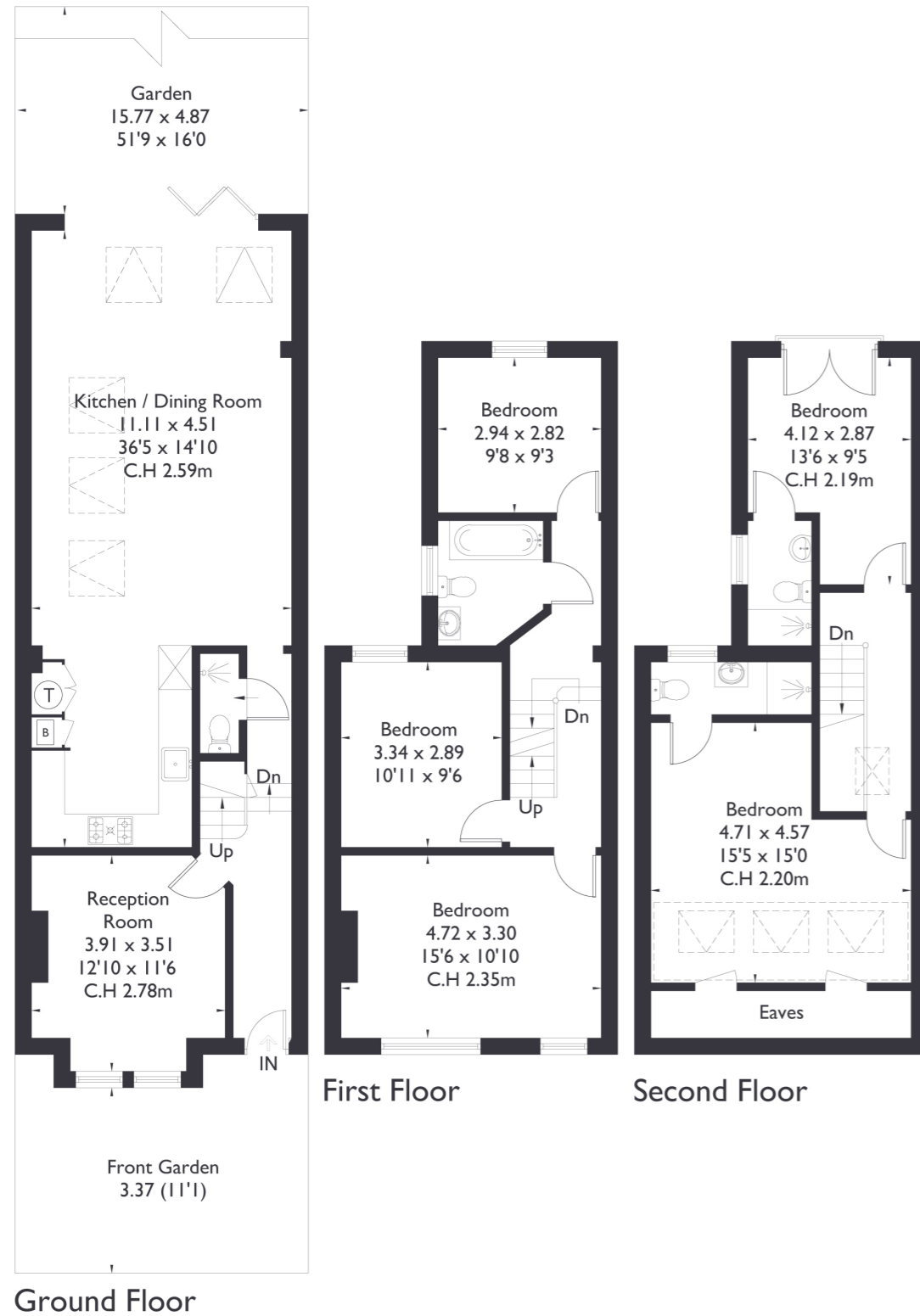


Windermere Road London W5

Approximate Floor Area = 166.3 sq m / 1790 sq ft



5 BEDROOM HOUSE

Windermere Road, W5

£1,550,000

Welcome to this fantastic five bedroom, three bathroom family home with an additional W/C, perfectly positioned in the heart of Northfields.

Beautifully presented throughout, this lovely terraced property enjoys stunning views over Lammas Park and has been finished to a wonderful standard.

FEATURES

- Five Bedrooms
- Three Bathrooms/ Downstairs W/C
- Open Plan Kitchen/Living
- Views Of Lammas Park
- Northfields Station (Piccadilly Line)
- Northfield Amenities
- EPC Rating C



5 BEDROOM HOUSE

Windermere Road, W5

As you step inside, you're welcomed by a bright entrance hall leading to a front reception room, currently arranged as a bedroom.

To the rear of the property, you'll find a spacious and stylish open-plan kitchen and living area, complete with bifold doors that open out to a private garden—backing directly onto the peaceful greenery of Lammas Park, offering a truly special outlook.

Upstairs, the first floor offers three comfortable bedrooms along with a modern family bathroom. The top floor features two further bedrooms, both with en suite bathrooms—ideal for guests, older children, or flexible home-working space. This lovely home is just a 2-minute walk from Northfields Station and local amenities, and it falls within the sought-after catchment area for Fielding Primary School.

EPC Rating C.

