





24 Carew Road, Ashford, Surrey TW15 1JQ
£539,950 - Freehold



PROPERTY DESCRIPTION

Stunning three bedroom semi detached house situated in this sought after location close to local shops and schools. The property has been superbly maintained by the current owners and benefits from its own drive way to off road parking and a 70' westerly facing garden, the property also has plenty of scope to extend subject to the usual planning permission. The accommodation comprises of an entrance hall, good size lounge/dining room, modern fitted kitchen, landing with three bedrooms and a modern shower room, outside there is a 20' x 8 storage/workshop that used to be the garage. Viewings are highly recommended, please contact the vendors sole agent to arrange a appointment.

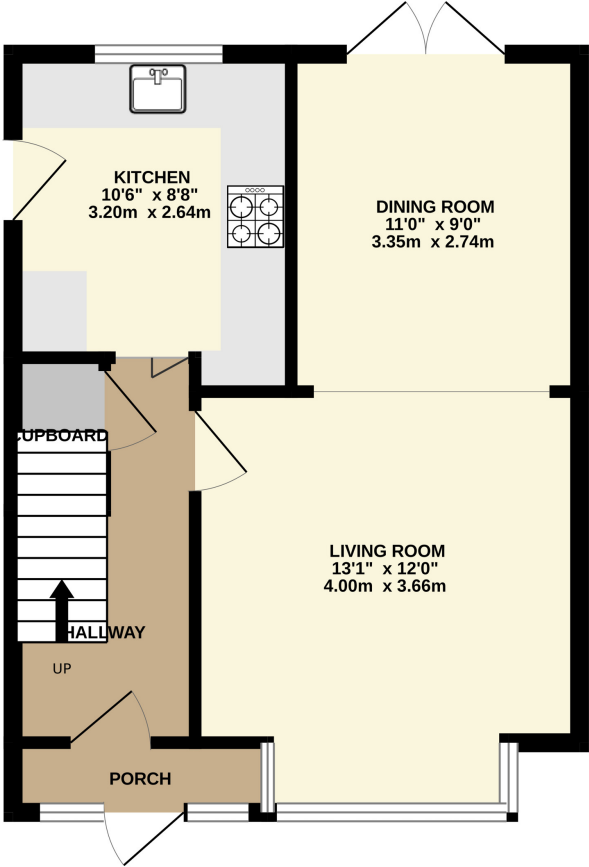
POINTS OF INTEREST

- Semi detached house
- Three bedrooms
- Excellent condition throughout
- 70' West facing rear garden
- Off road parking
- Scope for exntenstions STPP
- Sought after location
- Modern bathroom & kitchen
- 20' x 8' workshop/storage
- Viewing recommended

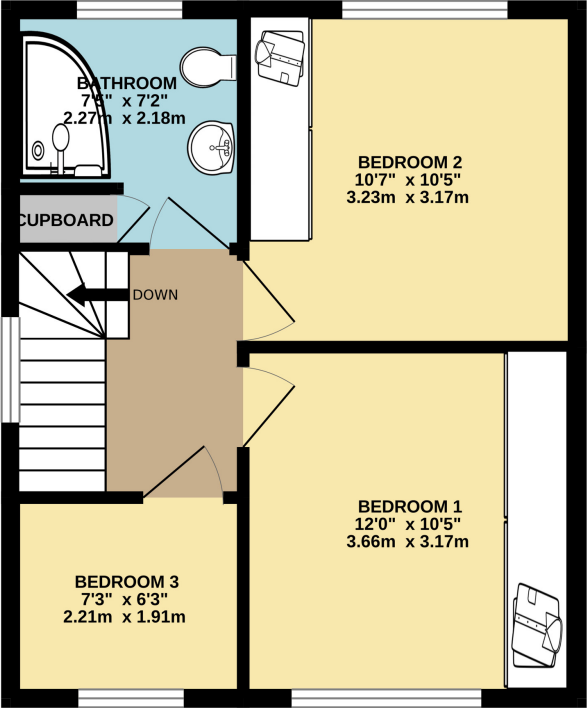




GROUND FLOOR



1ST FLOOR



Whilst every attempt has been made to ensure the accuracy of the floorplan contained here, measurements of doors, windows, rooms and any other items are approximate and no responsibility is taken for any error, omission or mis-statement. This plan is for illustrative purposes only and should be used as such by any prospective purchaser. The services, systems and appliances shown have not been tested and no guarantee as to their operability or efficiency can be given.
Made with Metropix ©2024