



**The Avenue  
Brotton  
Saltburn-by-the-Sea  
North Yorkshire  
TS12 2PS**

**Offers in Excess of £298,000**

**bettermove**

# The Avenue

## Saltburn-by-the-Sea

Bettermove are proud to present this 4 bedroom End of Terrace House in Brotton available with no forward chain.

The property benefits from double glazing, gas central heating throughout and has off street parking available via the driveway. The council tax band is C.

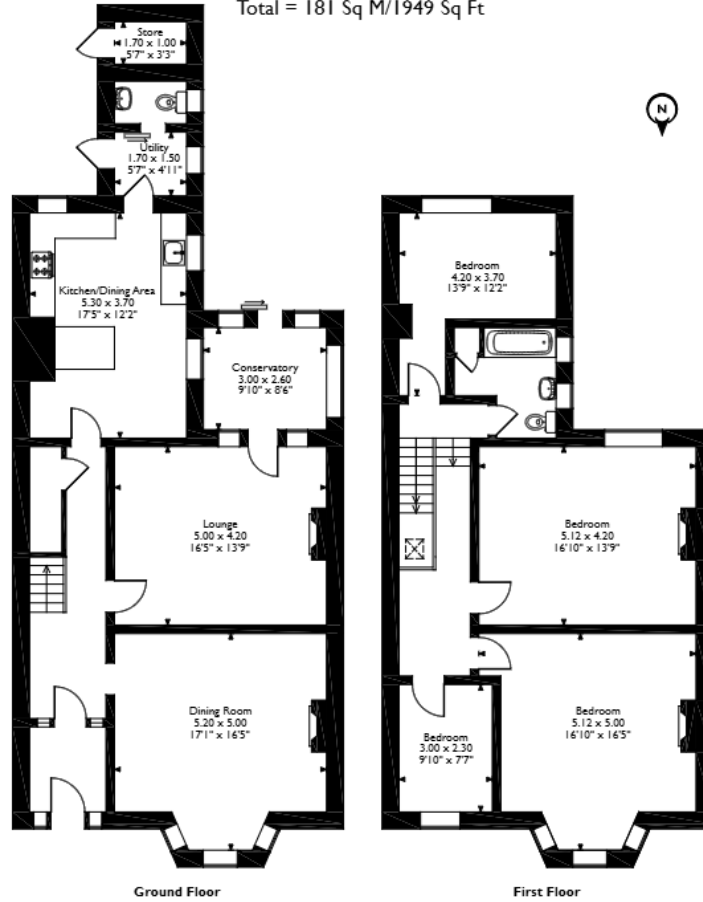
The interior of this property comprises a spacious living room, dining room, conservatory, the fitted kitchen, utility room and the convenient WC on the ground floor. The first floor consists of four bedrooms and the family bathroom. The exterior boasts a private rear garden, perfect for enjoying the summer months.

Located in the popular village of Brotton, the property is close to a range of amenities, including shops, supermarkets, restaurants and pubs. Excellent transport connections can be found from the A171 and many local bus routes.

This exciting opportunity should not be missed! All enquiries can be made through Bettermove on 0330 004 0050.



The Avenue, Brotton, Saltburn-by-the-Sea,  
Approximate Gross Internal Area  
Main House = 179 Sq M/1927 Sq Ft  
Outbuilding = 2 Sq M/22 Sq Ft  
Total = 181 Sq M/1949 Sq Ft



Please note that the location of doors, windows and other items are approximate and this floorplan is to be used for illustrative purposes only. Unauthorized reproduction is prohibited.



20-22 Bridge End, Leeds, LS1 4DJ  
t: 0330 004 0050 e: hello@bettermove.co.uk  
[www.bettermove.co.uk](http://www.bettermove.co.uk)