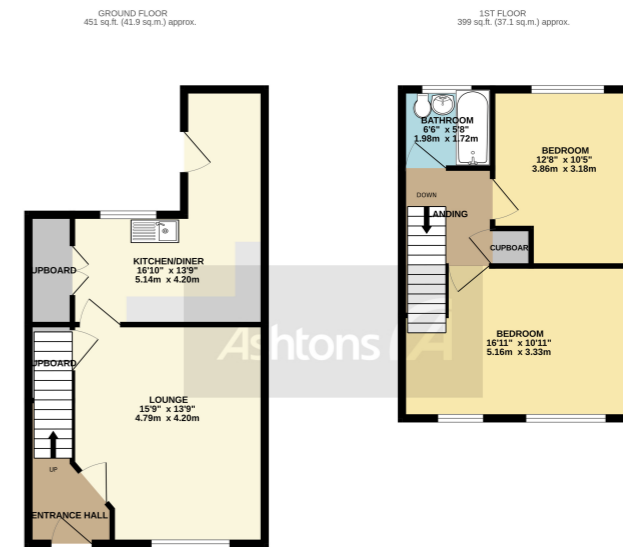


42 Derek Avenue, Warrington, Cheshire, £155,000



TOTAL FLOOR AREA: 850 sq ft (79.0 sq m) approx.
While every effort has been made to ensure the accuracy of the above information, Ashtons cannot be held responsible for any errors or omissions. This plan is for illustrative purposes only and should be used as a guide only. The actual layout and dimensions may vary and are subject to change without notice. See also the Ashtons website for more information.



Welcome to a charming two-bedroom mid-mews house that exudes warmth and comfort. The spacious rooms throughout create an inviting atmosphere, offering a delightful living experience.

 x 2  x 1

Featuring two double bedrooms, this home provides ample space for both residents and guests. The west-facing rear garden adds a touch of tranquility, allowing you to enjoy the beauty of the outdoors in the comfort of your own home.

[See more of this house at ashtons.net](https://www.ashtons.net)

