

# FOR SALE

---

Whitehall Park Road,  
Chiswick, W4

---

Flat  
Grove Park

---

£725,000 lh

---

2  1  1 

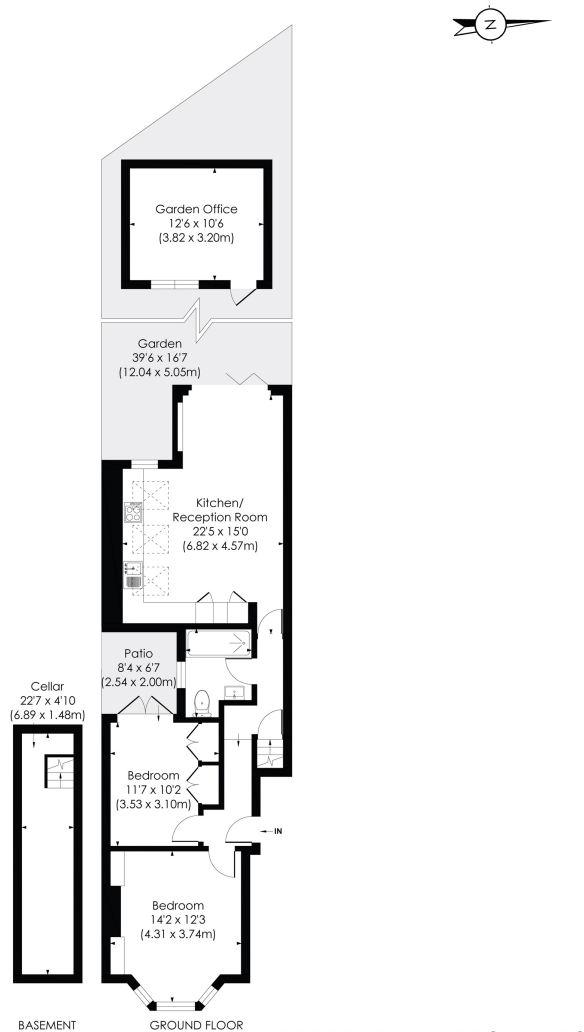


**horton  
andgarton**

SALES / LETTINGS / PROPERTY MANAGEMENT

hortonandgarton.co.uk | Sales 020 3989 6464 | Lettings 020 3989 5454  
161 Chiswick High Road, London, W4 2DT





**WHITEHALL PARK ROAD, W4**

Approx. Gross Internal Floor Area

**939 Sq' / 87.27 SqM** (Including Basement and Garden Office)

**698 Sq' / 64.85 SqM** (Excluding Basement and Garden Office)

**horton  
andgarton**

© Pixangle Property Marketing Ltd. info@pixangle.com Tel: 0208 870 2118

This floor plan has been prepared for the purpose of illustration only in accordance with the latest RICS code of measuring practice and is not to scale. All measurements and areas are approximate and whilst every effort has been made to ensure the accuracy of the plan contained here, no responsibility is taken for any error, omission or misstatement.



Ground floor flat | Two bedrooms - One bathroom | 698 Sq' - 64.85 SqM | 39' West facing garden | EPC rating C | Grove Park



hortonandgarton.co.uk

Sales 020 3989 6464

Lettings 020 3989 5454

161 Chiswick High Road, London, W4 2DT