

10 Kedleston Drive, Orpington, Orpington, Kent, BR5 2DR

Property Images

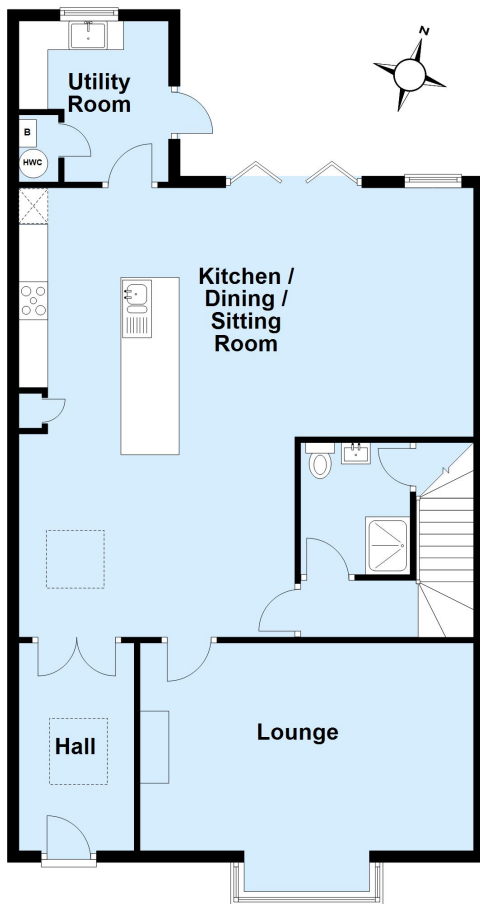






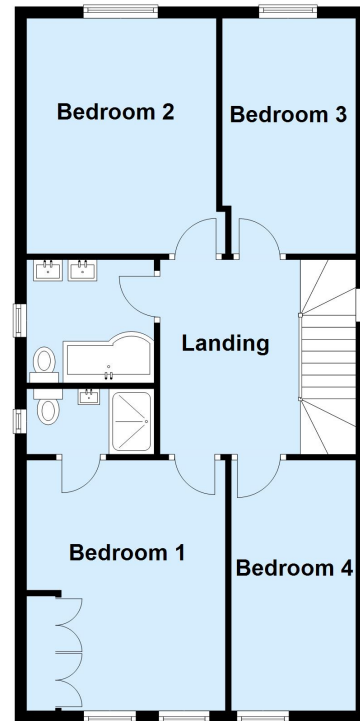
Ground Floor

Approx. 98.9 sq. metres (1064.7 sq. feet)



First Floor

Approx. 68.6 sq. metres (738.4 sq. feet)



Total area: approx. 167.5 sq. metres (1803.1 sq. feet)

This plan is for general layout guidance and may not be to scale.
Plan produced using PlanUp.