

LAST REMAINING

4 bedroom detached home

AT WESTWOOD PARK, LENHAM

PLOT 25

The Davenham

£615,000

Available with a

£20,000

Deposit Top-Up or
Stamp Duty
Contribution*



philip
INDEPENDENT
ESTATE
AGENT
Jarvis

To make an appointment to view call:
01444 235665 or enquire within

*Terms & conditions apply, see our Sales Advisor for further information.

JONES
HOMES

Westwood Park The Davenham, Ham Lane, Lenham, Maidstone, Kent. ME17 2PZ.

£615,000 Freehold

Property Summary

"This is the last plot available so do not miss out". - Matthew Gilbert, Branch Manager.

Presenting to the market plot 25 which is the last unit available at Westwood Park. The Davenham design at the Jones Home development is located on the edge of Lenham village. The last unit available is a four bedroom detached home.

The developers also have various incentives available which adds to the desirability of the unit including £20,000 towards a deposit top up or contribution towards stamp duty.

Lenham is an incredibly popular village which boasts a wide range of shops, amenities and facilities to include schooling, two public houses and restaurants. There are also excellent commuter links with great access to the M20 as well as its direct railway line to London Victoria.

Do not miss this last chance to be apart of this new exciting village development, so book your viewing without delay.

Features

- Jones Homes New Build
- Incentives Available
- Stunning Four Bedroom Detached Home
- High Quality Finish Throughout
- Council Tax Band TBC
- Ensuite To Master Bedroom
- NEFF Appliances
- Village Location
- EPC Rating: TBC

Ground Floor

Front Door To

Hall

Kitchen/Dining/Family Room

Utility Room

Living Room

Garden Room

WC

First Floor

Landing

Bedroom One

Ensuite

Bedroom Two

Bedroom Three

Bedroom Four

Bathroom

Exterior

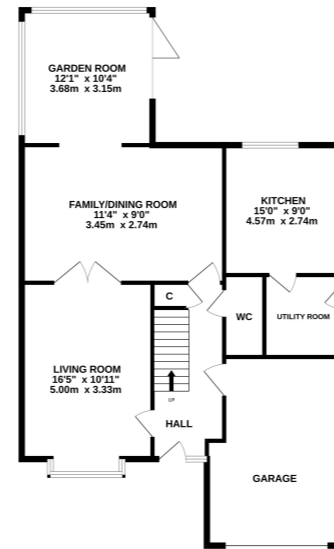
Front Garden

Parking

Single Garage

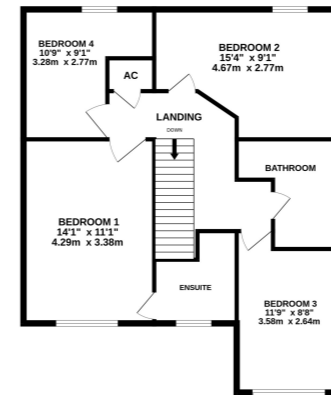
Rear Garden

GROUND FLOOR



Whilst every attempt has been made to ensure the accuracy of the description contained herein, measurements of areas, volumes, items and any other items are approximate and the responsibility is taken for any error, omission or mis-statement. This plan is for illustrative purposes only and should be used as such by any prospective purchaser. The services, systems and appliances shown here are not been tested and no guarantee as to their operability or efficiency can be given. Made with Metagen 02/24

1ST FLOOR



Please Note: All dimensions are approximate and quoted for guidance only. Reference to appliances and/or services does not imply they are necessarily in working order or fit for purpose. interested parties are advised to obtain verification from their solicitors as to the freehold/leasehold status of the property, the position regarding any fixtures and fittings and where the property has been extended/converted as to Planning Approval and Building Regulations compliance. These particulars do not constitute or form part of an offer or contract, nor may they be regarded as representations. All interested parties must themselves verify their accuracy. Where a room layout or virtual tour included this is for the general guidance only, it is not to scale and its accuracy cannot be confirmed.



Viewing Strictly By Appointment With