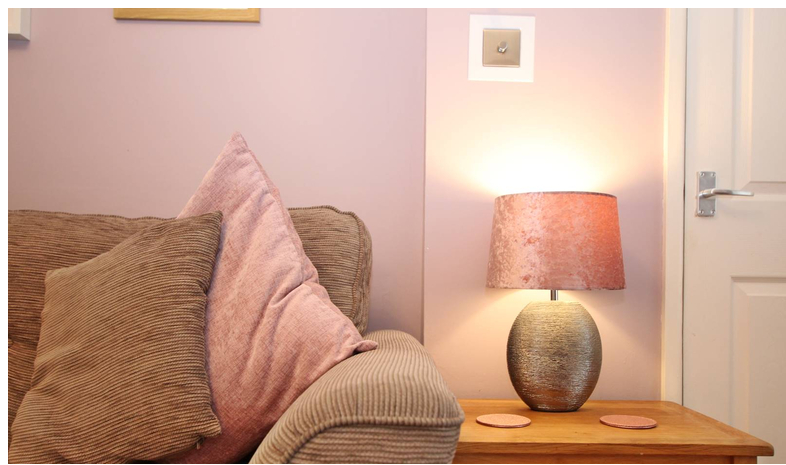
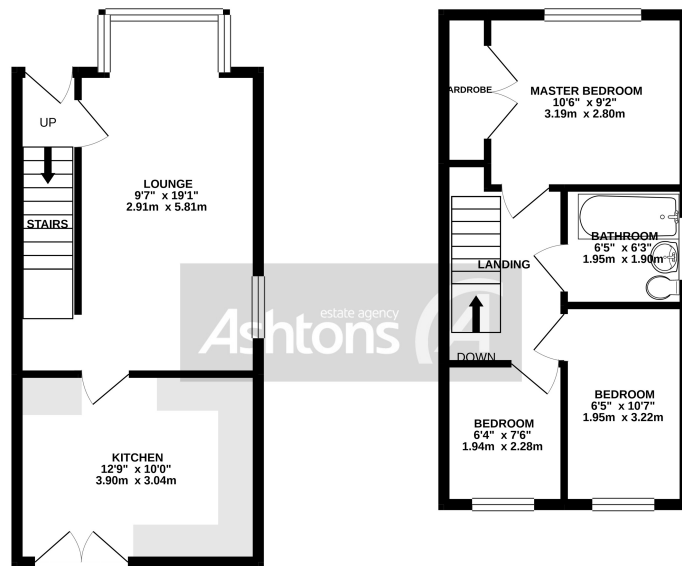




*3 Ridgewood Drive, St Helens, Merseyside. WA9
3XU.
£150,000*

Spacious Gardens To Rear | Popular Location | Family Bathroom | Parking For Two Vehicles | Modern Fitted Kitchen | Double Glazing | Combi Boiler & Central Heating System |





TOTAL FLOOR AREA : 683 sq.ft. (63.5 sq.m.) approx.

While every attempt has been made to ensure the accuracy of the floorplans contained here, measurements of doors, windows, stairs and any other items are approximate and no responsibility is taken for any error, omission or mis-statement. This plan is for illustrative purposes only and should be used as such by any prospective purchaser. The services, systems and appliances shown here are not intended and no guarantee as to their condition or whether or not they are given. Made with Metrepx 0.0021

Ridgewood Drive, a popular estate with a convenient area with plenty of amenities around. Located towards the section off New Street, this family home is positioned within walking distance to schools, shops, and great road links. If you have children or enjoy the outdoors you'll also find a few parks within the area.

For commuters, St Helens Linksway provides access to the M62 and schools in the area range from lower education at Sherdley and Eaves Primary school to higher schooling at Sutton Academy.



Contact your local office to arrange a viewing:

- Padgate: 01925 479334
- Great Sankey: 01925 454300
- Winwick: 01925 232146
- Stockton Heath: 01925 453400
- St.Helens: 01744 754120
- Wigan: 01942 498862
- Culcheth: 01925 764744
- Ashton-In-Makerfield: 01942 364446
- Newton-Le-Willows: 01925 907770
- Commercial Office: 01925 907709
- Lettings Head Office: 01925 873533
- Financial Services: 01925 221234

Viewing Arrangements

Viewing is strictly by appointment only through Ashtons Estate Agency.

Disclaimer Property Details

These particulars, whilst being believed to be accurate are set out as a general outline only for guidance and do not constitute any part of an offer or contract. Intending purchasers should not rely on them as statements of representation of fact, but must satisfy themselves by inspection or otherwise as to their accuracy. We have not carried out a detailed survey nor tested the services, appliances and specific furnishings. The measurements given are approximate. No person in this firm's employment has the authority to make or give any representation or warranty in respect of the property.

All details, photographs and floorplans are the copyright of Ashtons Estate Agency.



How much you can borrow?
Speak to a mortgage expert in your local office.

Ashtons Financial Services

For more information, please call our office 01744 754120.