



42 Pentland Terrace, High Valleyfield, KY12 8SG  
Offers Over £80,000











# Key Features

 2 Bedrooms

 1 Public

 1 Bathroom

- A well-presented, two bedroom, top floor apartment located within the Fife village of High Valleyfield
- An ideal first-time home or buy to let investment with pleasant outlooks towards the Forth Estuary
- Amenities available locally with further amenities in nearby Cairneyhill and Dunfermline
- Convenient for transport links to Kincardine Bridge and onto Edinburgh, Glasgow and Stirling
- Parking to the front and communal drying area to the rear
- Secure entry phone system
- Large, front facing, bay window lounge with space for a table and chair set
- Modern kitchen with a range of storage options and appliances
- Two double bedrooms with built in wardrobes
- Modern family bathroom with three piece suite and shower over the bath
- Storage within the hall
- Viewing comes highly recommended
- Council Tax Band – A
- EPC Rating – C
- Factored building and grounds



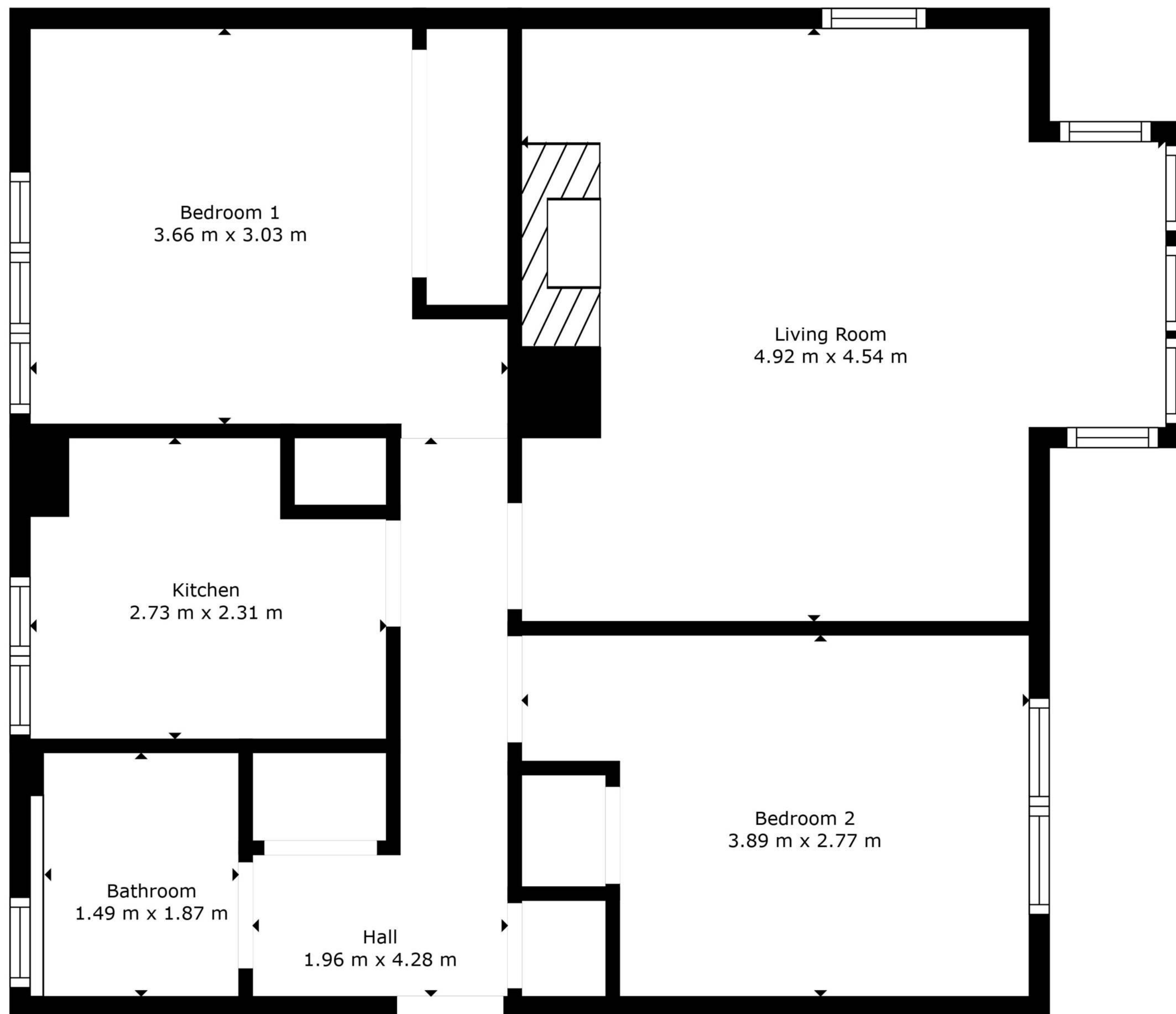


# Location

"Nestled along the coast of the River Forth, High Valleyfield is a charming village that offers an appealing blend of affordability and convenience. Situated just a short drive from Dunfermline, it provides easy access to excellent transport links, making it a great choice for commuters to Edinburgh and Glasgow. The village boasts a strong sense of community, with local amenities including shops, schools, and leisure facilities, as well as beautiful green spaces like nearby Valleyfield Woodland Park. Whether you're a first-time buyer or looking for a family home, High Valleyfield offers a range of property options in a well-connected setting."







Floor Plan Created By Cubicasa App. Measurements Deemed Highly Reliable But Not Guaranteed.



## Enquiries

 01383 629720

 [info@maloco.co.uk](mailto:info@maloco.co.uk)

 [maloco.co.uk](http://maloco.co.uk)



Floorplans are for illustrative purposes only. Measurements are deemed highly reliable but not guaranteed.

