



**GREGORY BROWN**  
RESIDENTIAL SALES & LETTINGS

£295,000 Leasehold  
**FOR SALE**



## **Laleham Road, Staines-upon-Thames, Surrey, TW18 2QF**

VERY WELL PRESENTED & SPACIOUS TWO BEDROOM APARTMENT SITUATED IN THIS MUCH SOUGHT AFTER RIVERSIDE MANSION BLOCK IDEALLY LOCATED FOR TOWN CENTRE, MAINLINE TRAIN STATION & RIVER THAMES. The property benefits from a spacious lounge/diner with French doors to balcony enjoying views over the well-kept communal grounds, separate modern fitted kitchen, two double bedrooms, luxury shower room, residents parking and a long lease. Viewings Highly Recommended!

**Gregory Brown**

127a, High Street, Staines-upon-Thames, TW18 4PD

01784 451458

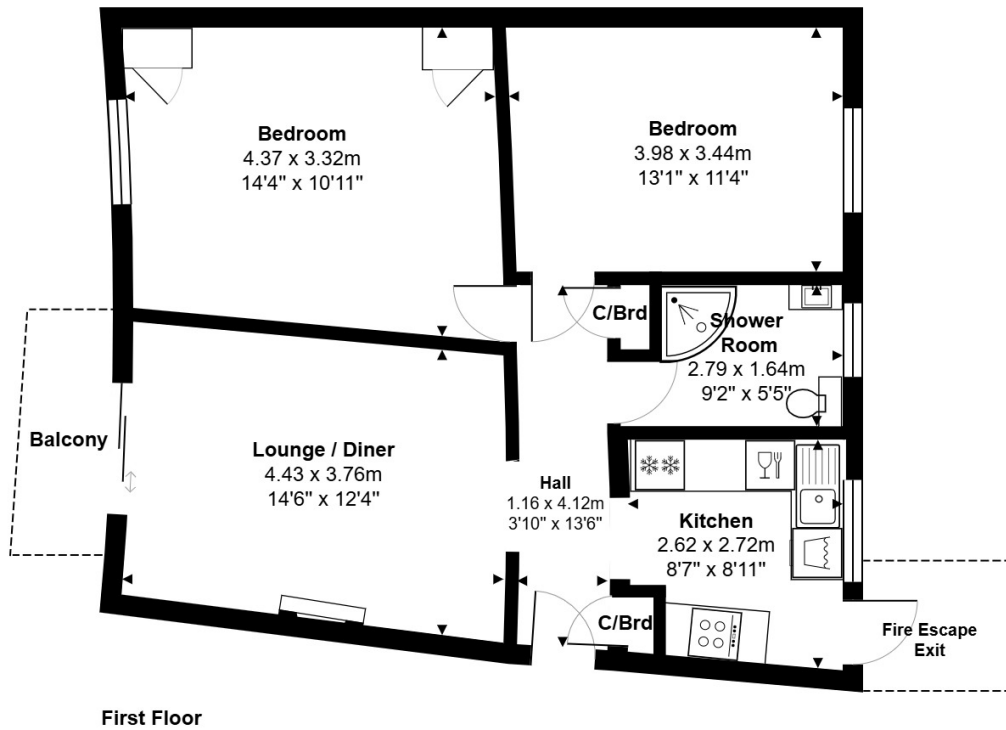
[staines@gregory-brown.co.uk](mailto:staines@gregory-brown.co.uk)

ROOM DESCRIPTIONS

\_\_\_\_\_



## FLOORPLAN



Total Area: 60.3 m<sup>2</sup> ... 649 ft<sup>2</sup>

All measurements are approximate and for display purposes only.

127a, High Street, Staines-upon-Thames, TW18 4PD

01784 451458

staines@gregory-brown.co.uk