

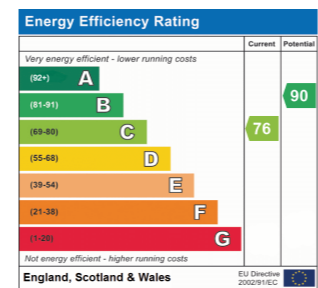


Dove House Close, Godmanchester PE29 2DY

£325,000



- Semi Detached Family Home
- Three Bedrooms
- Re-Fitted Kitchen/Dining Room
- Modern Family Bathroom
- Great Sized Enclosed Rear Garden
- Garage And Off Road Parking
- Walking Distance To Local Schools And Amenities
- Sought After Riverside Village
- Ideal First Time Purchase



Peter Lane
PARTNERS
EST 1990

Huntingdon
60 High Street
Huntingdon
01480 414800

Kimbolton
24 High Street
Kimbolton
01480 860400

St Neots
32 Market Square
St. Neots
01480 406400

Mayfair Office
Cashel House
15 Thayer St, London
0870 1127099

Huntingdon 01480 414800

www.peterlane.co.uk Web office open all day every day

huntingdon@peterlane.co.uk

Approximate Gross Internal Area = 80.5 sq m / 866 sq ft
Garage = 12.5 sq m / 135 sq ft
Total = 93.0 sq m / 1001 sq ft

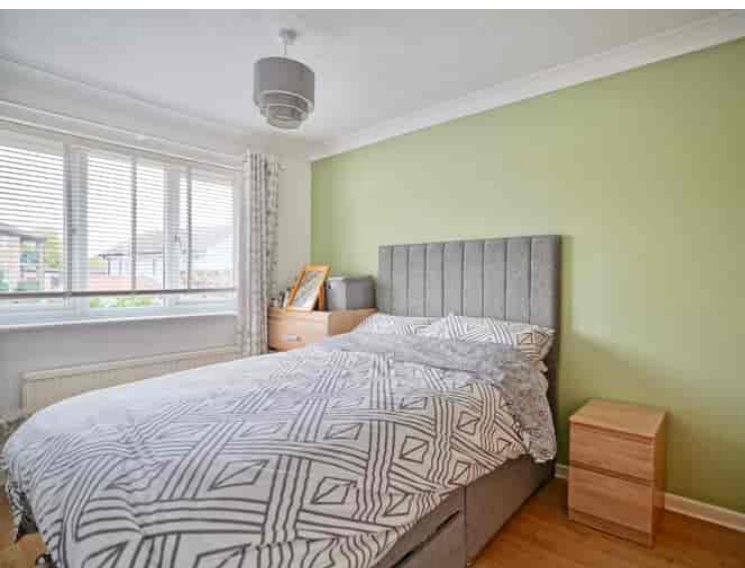


Ground Floor

First Floor

(Not Shown In Actual Location / Orientation)

This plan is for layout guidance only. Not drawn to scale unless stated. Windows and door openings are approximate. Whilst every care is taken in the preparation of this plan, please check all dimensions, shapes and compass bearings before making any decisions reliant upon them. (ID1141781)
Housepix Ltd



Storm Porch Over

UPVC double glazed door to

Entrance Hall

Double glazed window to side aspect, stairs to first floor, wood effect flooring.

Living Room

16' 0" x 11' 2" (4.88m x 3.40m)

A double aspect room with double glazed box bay window to front and double glazed window to side aspect, two radiators, wood effect flooring.

Kitchen/Dining Room

15' 9" x 11' 9" (4.80m x 3.58m)

Double glazed window and double glazed sliding patio doors to rear, re-fitted in a range of base and wall mounted units with complementing work surface, drawer units, single drainer sink unit with mixer tap, space for fridge freezer, integrated electric oven and electric hob with stainless steel back plate and cooker hood over, space and plumbing for washing machine, understairs storage cupboard, radiator, coving to ceiling, recessed downlighters, two radiators, wood effect flooring.

First Floor Landing

Access to loft space, cupboard housing central heating boiler.

Bedroom 1

11' 11" x 9' 7" (3.63m x 2.92m)

Double glazed window to rear aspect, coving to ceiling, built in wardrobes, radiator, laminate flooring.

Bedroom 2

11' 11" x 8' 3" (3.63m x 2.51m)

A double aspect room with double glazed windows to front and side aspects, radiator.

Bedroom 3

7' 9" x 7' 4" (2.36m x 2.24m)

Double glazed window to front aspect, radiator.

Family Bathroom

Double glazed window to rear aspect, fitted in a modern three piece suite comprising low level WC with concealed cistern, vanity wash hand basin, panel bath with mixer shower attachment over and shower screen, complementing tiling, recessed downlighters, extractor fan, chrome heated towel rail.

Outside

The front garden is landscaped to stone with a drive way providing off road parking for two to three vehicles leading to the **Single Garage** with up and over door and personal door to the side. The rear garden is laid to lawn with two seating areas, flower and shrub borders, trees, outside tap and lighting.

Tenure

Freehold

Council Tax Band - C