

CROSSWAYS

Lower Pennington Lane, Lymington, SO41 8FT



Prices from £675,000 - £950,000

A selection of stunning brand new homes built by Harnden Homes due for completion in Spring 2025 positioned in a private small development moments from Woodside park and the twin marinas of Lymington.

Key Features:

- Four individual homes
- Consisting of one three-bedroom, two-bathroom property and three five-bedroom, three-bathroom properties
- Large kitchen/family room
- Scope for buyer to personalise before completion
- Private parking

VIEWINGS STRICTLY BY APPOINTMENT ONLY

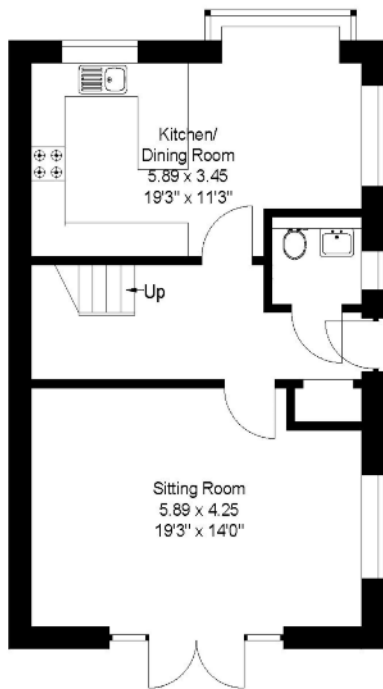


Ash House £950,000

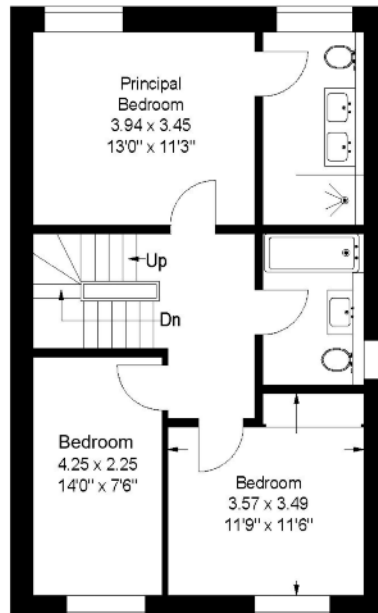
 5
  1
  3



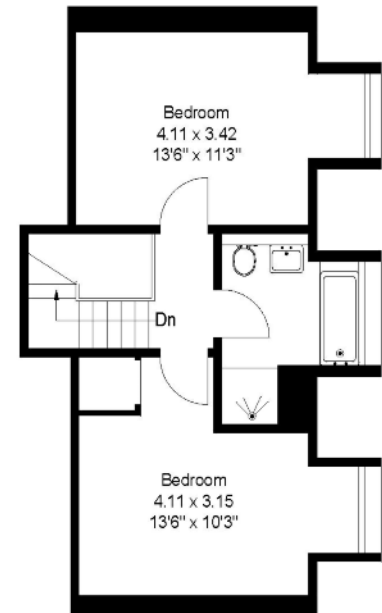
Ash House Floorplan



Ground Floor



First Floor



Second Floor

Approximate
Gross Internal Floor Area
Total: 168sq.m. or 1808sq.ft.

Plans produced and Copyright HOMEPLAN
www.homeplanuk.co.uk

FOR ILLUSTRATIVE PURPOSES ONLY
NOT TO SCALE

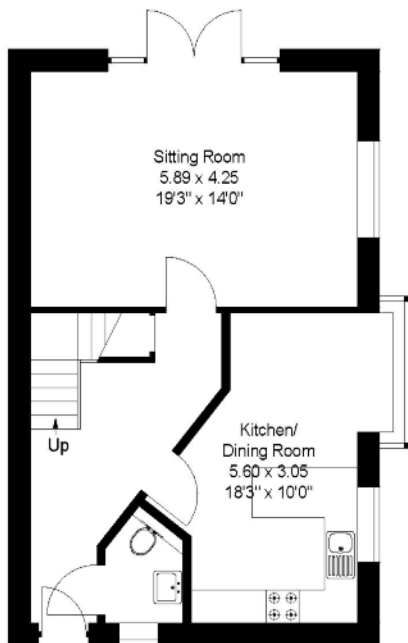


Rowan House £895,000

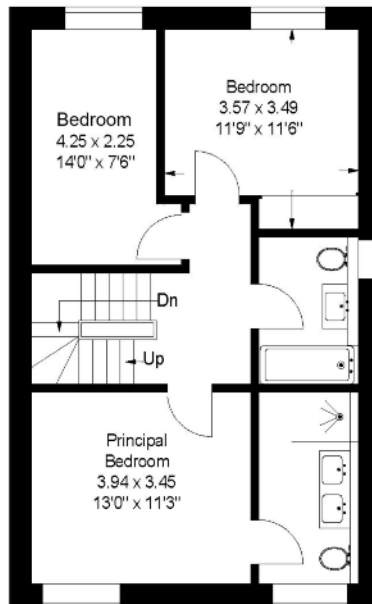
5 1 3



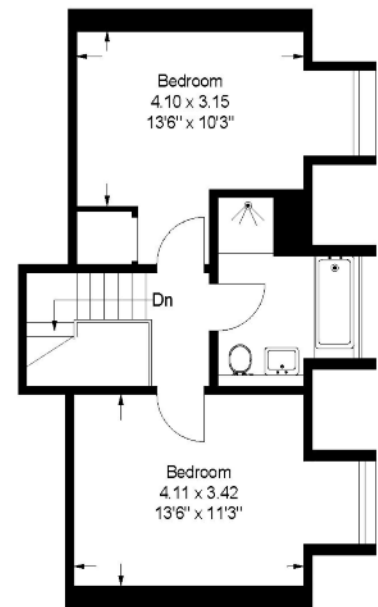
Rowan House Floorplan



Ground Floor



First Floor



Second Floor

Approximate
Gross Internal Floor Area
Total: 166sq.m. or 1786sq.ft.

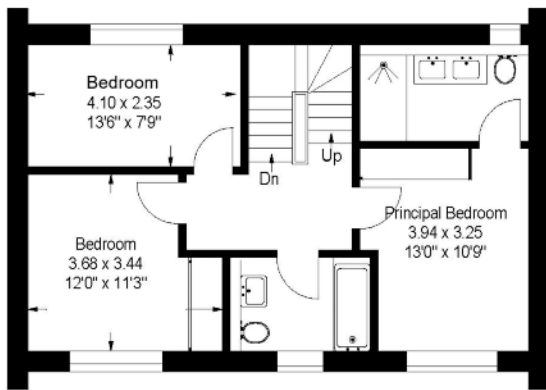
Plans produced and Copyright HOMEPLAN
www.homeplanuk.co.uk

FOR ILLUSTRATIVE PURPOSES ONLY
NOT TO SCALE

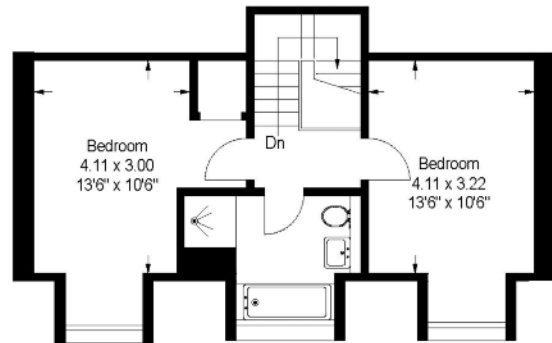




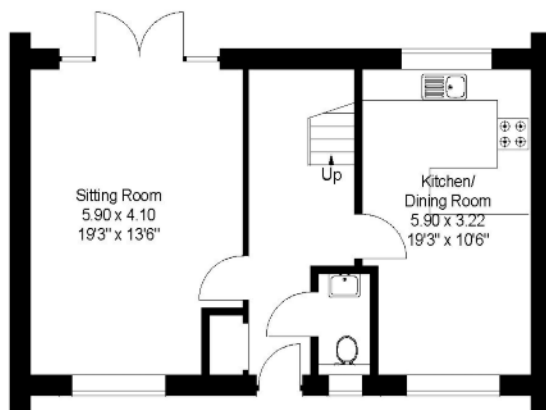
Hornbeam House Floorplan



First Floor



Second Floor



Ground Floor

Approximate
Gross Internal Floor Area
Total: 160sq.m. or 1722sq.ft.

Plans produced and Copyright HOMEPLAN
www.homeplanuk.co.uk

FOR ILLUSTRATIVE PURPOSES ONLY
NOT TO SCALE

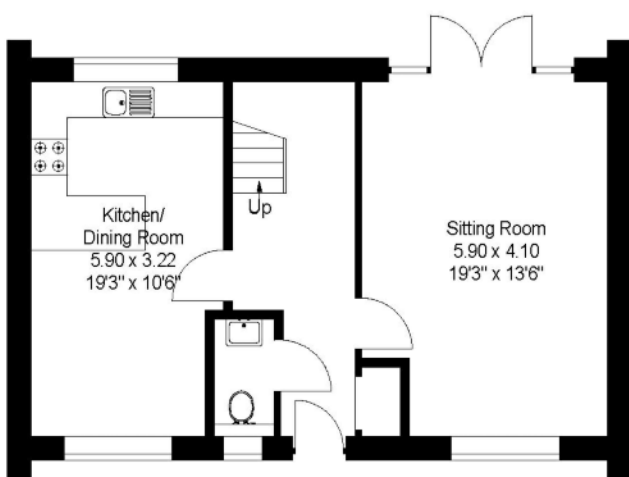


Lime Cottage £675,000

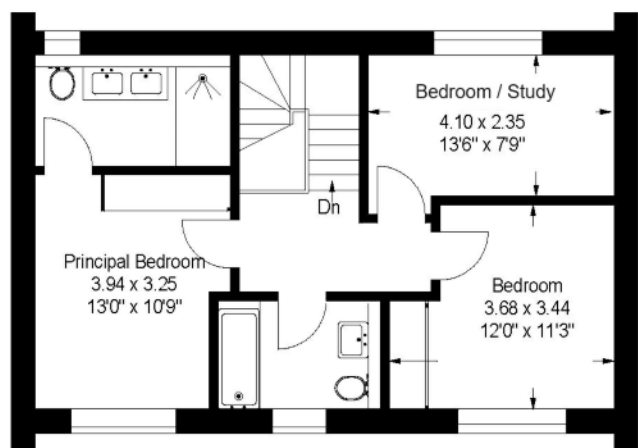
 3  1  2



Lime Cottage Floorplan



Ground Floor



First Floor

Approximate
Gross Internal Floor Area
Total: 114sq.m. or 1227sq.ft.

Plans produced and Copyright HOMEPLAN
www.homeplanuk.co.uk

**FOR ILLUSTRATIVE PURPOSES ONLY
NOT TO SCALE**





Important Notice

Spencers of Lymington would like to point out that all measurements set out in these particulars are approximate and are for guidance only. We have not tested any apparatus, equipment, systems or services etc and cannot confirm that they are in full efficient working order or fit for purpose. No assumption should be made as to compliance with planning consents or current usage. Nothing in these particulars is intended to indicate that any carpets or curtains, furnishings or fittings, electrical goods (whether wired or not), gas fires or light fittings, or any other fixtures not expressly included form any part of the property being offered for sale. Whilst we endeavour to make our sales particulars accurate and reliable, if there is any point which is of particular importance to you, please contact us and we will be happy to confirm the position to you.

