

SOLE
AGENT

The Cottage

Waters Edge | La Rue Du Crocq | St Saviour |

This well maintained one bedroom cottage is situated in a quiet picturesque location with fantastic sea and coastal views and Richmond beach on your doorstep. Accommodation comprises entrance porch, kitchen/lounge, double bedroom with fitted wardrobes and a shower room. The property benefits from a small lawned area and domestic greenhouse. Allocated parking for one car with public parking nearby. Regret no smokers. Not suitable for pets or children. Available immediately on a 1 year lease. Viewing is highly recommended to fully appreciate all the property has to offer

£1,600 pcm

1 BEDROOM

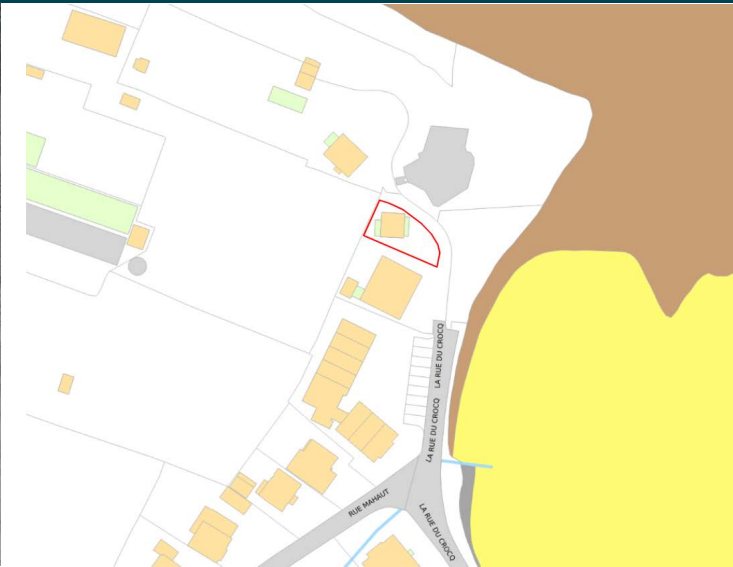
1 BATHROOM

1 RECEPTION

PHOTOS



SPECIFICATIONS



Lounge/Diner

4.63m x 2.55m (15' 2" x 8' 4")

Kitchen

3.04m x 1.82m (10' 0" x 6' 0")

Conservatory

4.96m x 1.41m (16' 3" x 4' 8")

Bedroom

3.96m x 2.92m (13' 0" x 9' 7")

Shower Room

2.34m x 1.10m (7' 8" x 3' 7")

Parking

Allocated parking for one car with public parking nearby.

Garden

The property benefits from a small lawned area and domestic greenhouse.

PRICE INCLUDES

Curtains, carpets and light fittings.

SPECIAL FEATURES

- Sea views
- Allocated parking
- Quiet and desirable location

SERVICES

Mains water, electricity and drainage. Oil fired central heating.

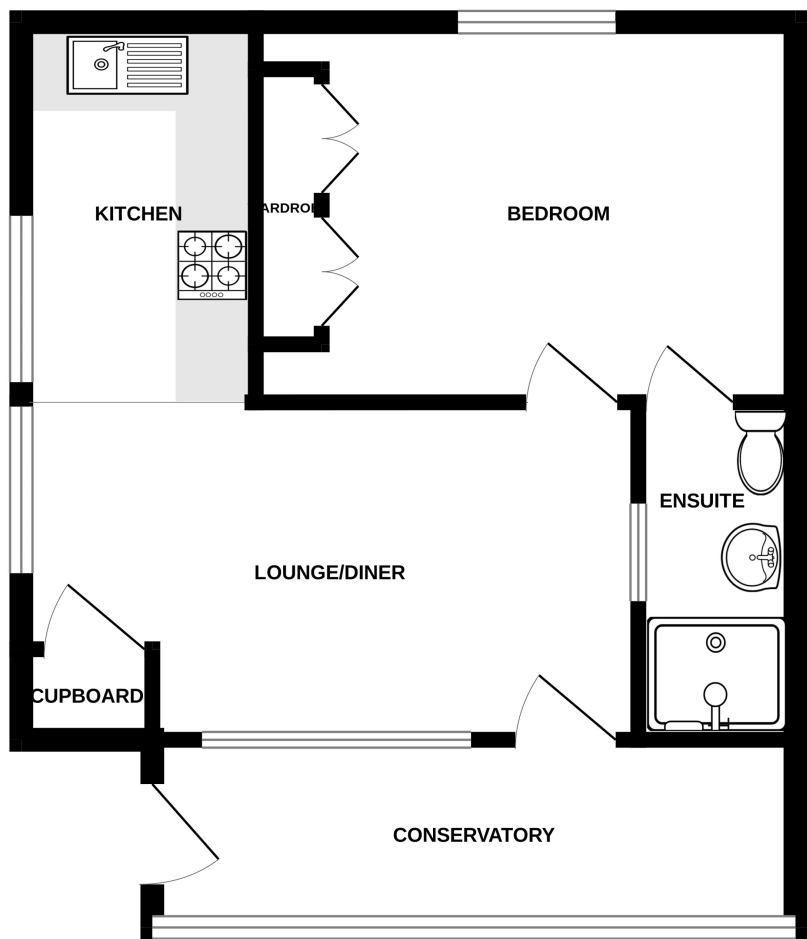
APPLIANCES INCLUDED

- Washing machine
- Oven and extractor fan
- Gas four ring hob
- Fridge

SCHOOL CATCHMENT

N/A

GROUND FLOOR



THE COTTAGE

Whilst every attempt has been made to ensure the accuracy of the floorplan contained here, measurements of doors, windows, rooms and any other items are approximate and no responsibility is taken for any error, omission or mis-statement. This plan is for illustrative purposes only and should be used as such by any prospective purchaser. The services, systems and appliances shown have not been tested and no guarantee as to their operability or efficiency can be given.
Made with Metropix 6/2023