



**St Marys Close
Alvaston
Derby
DE24 0GF**

Offers In Excess Of £234,000

bettermove

St Marys Close

Derby

Bettermove are proud to present this 2 bedroom semi-detached house in Alvaston.

The property benefits from double glazing, gas central heating throughout and has off street parking available.

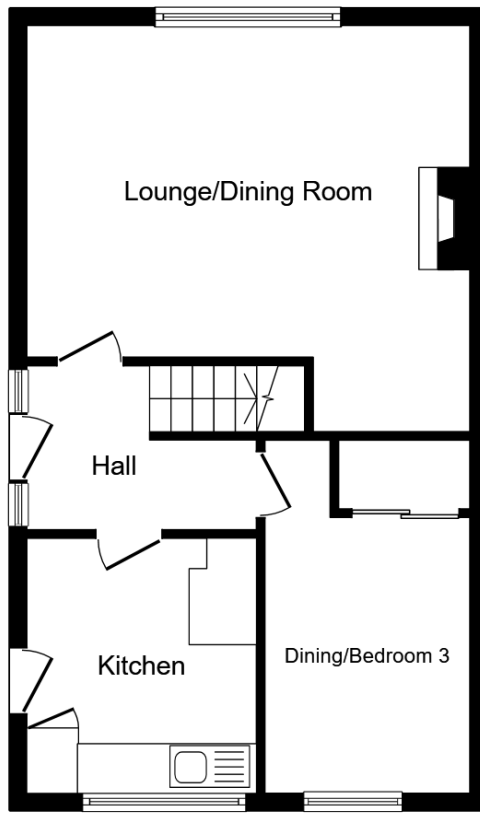
The council tax band is C.

The interior of this beautifully presented property comprises a spacious living room, dining room and fitted kitchen on the ground floor. The first floor consists of 2 bedrooms and the family bathroom. The exterior boasts a private rear garden, perfect for enjoying the summer months.

Located in the popular village of Alvaston, the property is close to a range of amenities, including shops, supermarkets, restaurants and pubs. Excellent transport connections can be found from the A5111, A6 and many local bus routes.

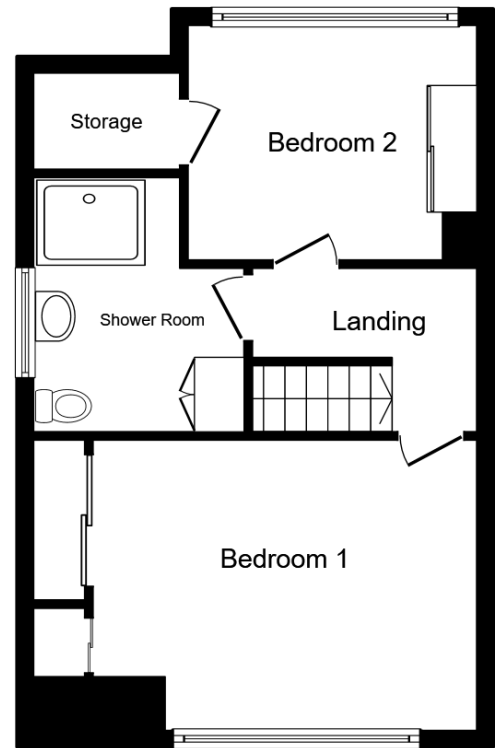
This exciting opportunity should not be missed! All enquiries can be made through Bettermove on 0330 004 0050.





Ground Floor

Floor area 49.7 m² (535 sq.ft.)



First Floor

Floor area 44.6 m² (480 sq.ft.)

TOTAL: 94.3 m² (1,015 sq.ft.)

This floor plan is for illustrative purposes only. It is not drawn to scale. Any measurements, floor areas (including any total floor area), openings and orientations are approximate. No details are guaranteed, they cannot be relied upon for any purpose and do not form any part of any agreement. No liability is taken for any error, omission or misstatement. A party must rely upon its own inspection(s). Powered by www.Propertybox.io



20-22 Bridge End, Leeds, LS1 4DJ
t: 0330 004 0050 e: hello@bettermove.co.uk
www.bettermove.co.uk