



**Normanton Grove
Stoke-on-Trent
Staffordshire
ST3 5BY**

£129,000

bettermove

Normanton Grove

Stoke-on-Trent

Bettermove are proud to present this 3 bedroom semi-detached house in Stoke-on-Trent available with no forward chain.

The property benefits from double glazing, gas central heating throughout and has off street parking available. The council tax band is B.

The interior of this property comprises a spacious living room, the fitted kitchen and the conservatory on the ground floor. The first floor consists of 3 bedrooms and the family bathroom. The exterior boasts a private rear garden, perfect for enjoying the summer months.

Located in the popular city of Stoke-on-Trent, the property is close to a range of amenities, including shops, supermarkets, restaurants and pubs. Excellent transport connections can be found from Longton Train Station, the A52, the A50 and many local bus routes.

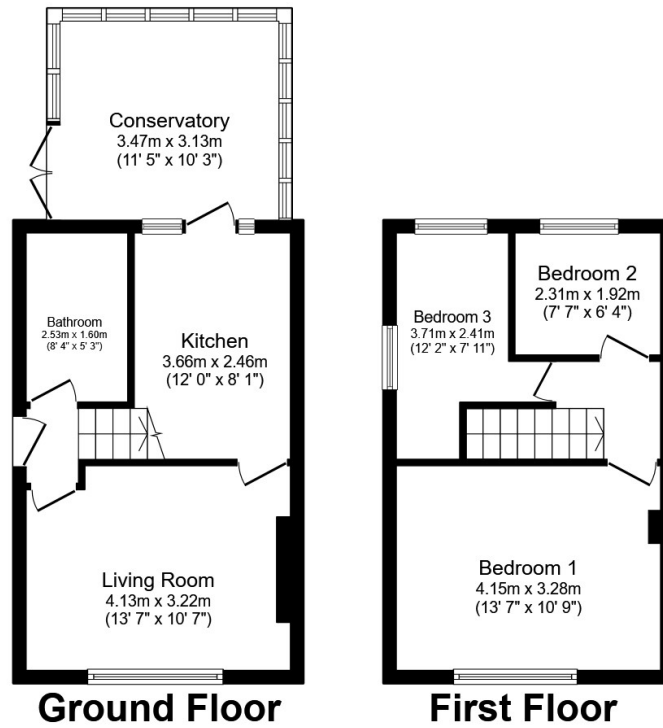
This exciting opportunity should not be missed! All enquiries can be made through Bettermove on 0330 004 0050.

You can secure the purchase today by paying an exclusivity fee of £1,000 which gives you the rights to purchase within a given timeframe.

Paying this fee ensures that the seller takes their property off the market and reserves it exclusively for you, therefore eliminating the risk of gazumping and aborted costs.

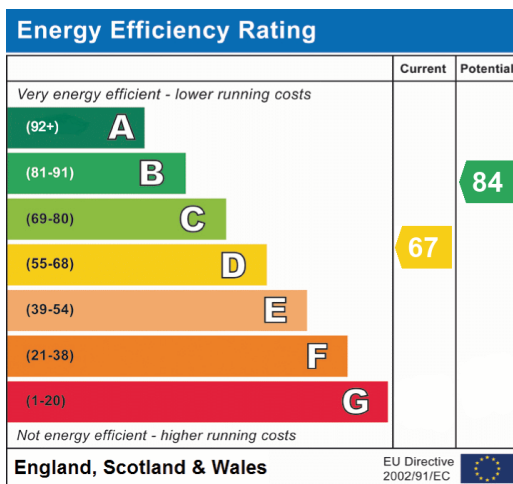
The exclusivity fee is returned to you upon successful completion of the property.





Total floor area 68.7 m² (740 sq.ft.) approx

This floor plan is for illustrative purposes only. It is not drawn to scale. Any measurements, floor areas (including any total floor area), openings and orientation are approximate. No details are guaranteed, they cannot be relied upon for any purpose and they do not form part of any agreement. No liability is taken for any error, omission or misstatement. A party must rely upon its own inspection(s). Powered by www.focalagent.com





20-22 Bridge End, Leeds, LS1 4DJ
t: 0330 004 0050 e: hello@bettermove.co.uk
www.bettermove.co.uk