



Nestled at the end of a private lane, this charming period cottage is situated on a substantial plot of just under an acre. The quaint cottage offers a versatile living space, along with the stable block and expansive grounds it would accommodate many different lifestyles. To the ground floor three reception rooms inclusive of 19ft kitchen/dining room set at its heart, utility room and cloakroom. To the first floor, four bedrooms, the master with an en-suite and a three-piece family bathroom. To the third floor a 15ft room with eves storage which S.T.P.P. could to be use as an addition bedroom. Additionally, there are stables connected to the house that have been renovated to provide an ancillary space e.g. home office, studio or home gym. Externally, A large sweeping driveway leading to the beautifully landscaped grounds of just under an acre, a bespoke tree house and a small stream behind the property. This property is an ideal family home encapsulating the perfect work life balance.



Property Information

Floor Plan

-  DETACHED CHARACTER COTTAGE
-  FOUR BEDROOMS
-  TWO BATHROOMS
-  COUNCIL TAX BAND - G
-  JUST UNDER AN ACRE PLOT
-  BEAUTIFULLY LANDSCAPED GROUNDS
-  STABLE BLOCK
-  TREE HOUSE
-  EPC - D

					
x4	x2	x2	x5	Y	N
Bedrooms	Reception Rooms	Bathrooms	Parking Spaces	Garden	Garage

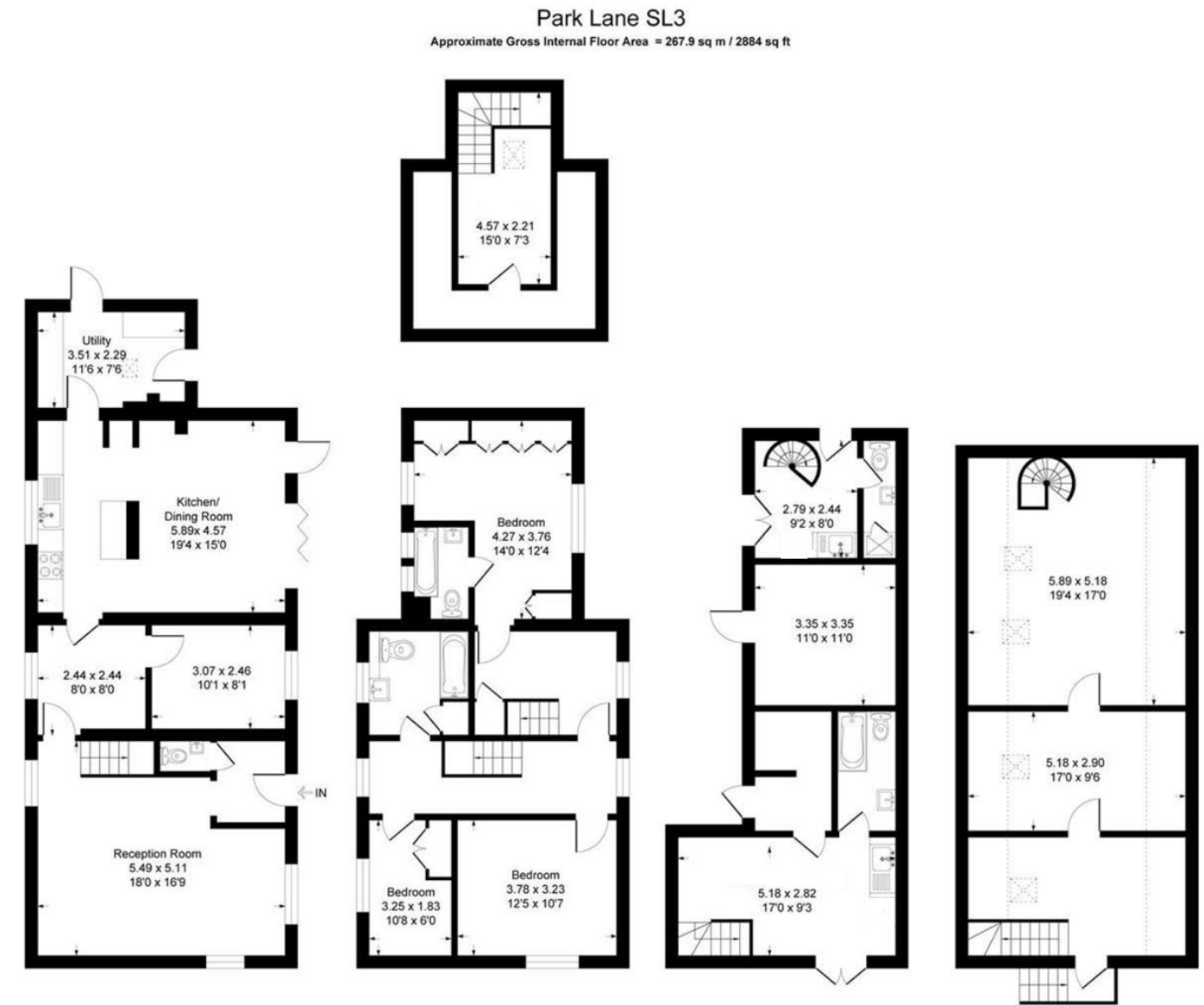


Illustration for identification purposes only, measurements are approximate, not to scale.

Prospective purchasers should be aware that these sales particulars are intended as a general guide only and room sizes should not be relied upon for carpets or furnishing. We have not carried out any form of survey nor have we tested any appliance or services, mechanical or electrical. All maps are supplied by Goview.co.uk from Ordnance Survey mapping. Care has been taken in the preparation of these sales particulars, which are thought to be materially correct, although their accuracy is not guaranteed and they do not form part of any contract.

External

Situated on approximately just under an acre plot, the property is approached by a long sweeping driveway with mature, beautifully landscaped grounds.

Foxborough Primary School (1.5 miles)
State School

Transport Links

Nearest stations:

Holy Family Catholic School (1.6 miles)
State School

Sunnymeads (1.2 miles)

Secondary Schools:

Wraysbury (1.8 miles)

Langley Grammar School (1.8 miles)
State School

Datchet (2 miles)

Schools

Primary Schools:

The Langley Academy (2.1 miles)
State School

Colnbrook Church of England Primary School (1.1 miles)
State School

Ditton Park Academy (2.1 miles)
State School

Wraysbury Primary School (1.3 miles)
State School

Council Tax
Band G

