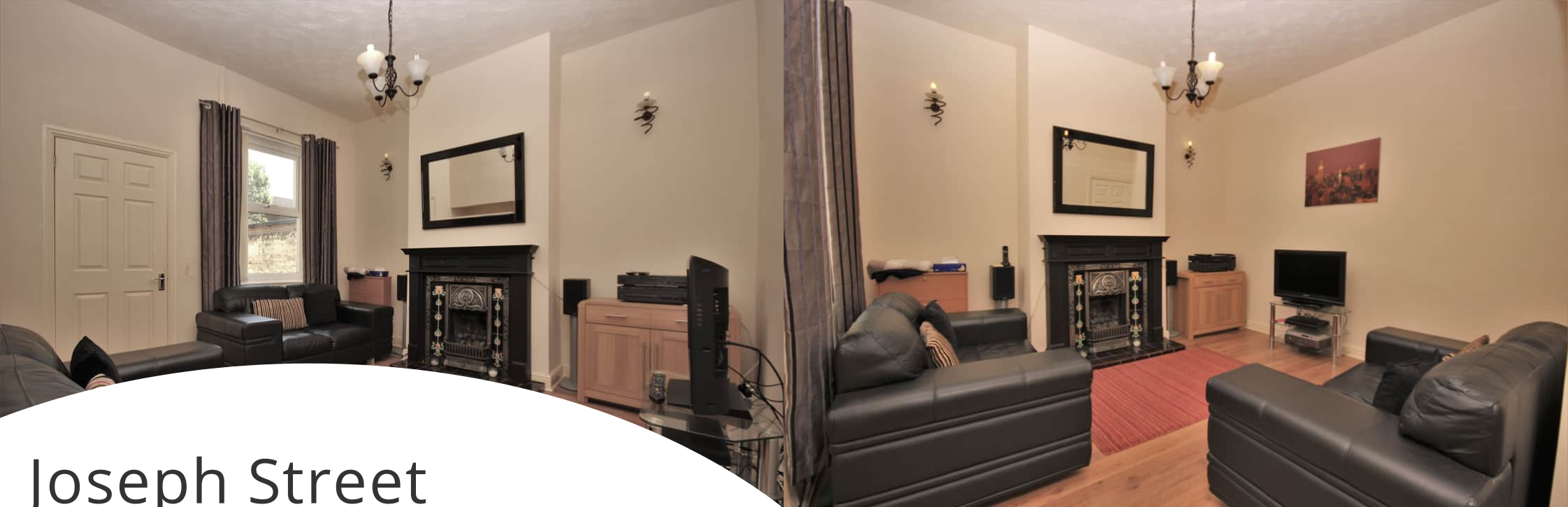




17 Joseph Street
Widnes, WA8 6QW



0151 424 5100
info@mylerestates.com



Joseph Street

Widnes, WA8 6QW

OFFERS OVER £115,000

Offered to market this **TERRACE FAMILY HOME**, benefitting from **THREE BEDROOMS**, UPVC double-glazed, gas central heating, close to local amenities, shops, **FAIRFIELD PRIMARY** school, walking distance to town centre and **VICTORIA PARK**, close to major road and railway networks, viewing **HIGHLY** recommended.





Ground Floor

Entrance Hall

Entered via UPVC double glazed door, Laminate to floor, ceiling light, radiator, stairs to first floor, doors to dining room and lounge.

Dining Room

3.72m x 3.51m (12' 2" x 11' 6")

Front aspect UPVC double glazed window, Laminate to floor, Ceiling light, Radiator. Gas fire in wood surround.

Lounge

4.04m x 3.70m (13' 3" x 12' 2")

Rear aspect UPVC double glazed window, Laminate to floor, Ceiling light, Wall Lights, Radiator, Gas fire in surround. Under stairs storage cupboard. Door to kitchen.

Kitchen

3.33m x 2.41m (10' 11" x 7' 11")

UPVC double glazed window, Tiles to floor, Ceiling light, Range of wall and base units with work surface over. electric oven, gas hob, extractor canopy, space and plumbing for washing machine, door to rear hall.

Rear Hallway

UPVC double glazed door to rear yard, tiles to floor, Storage cupboard and door to bathroom.

Bathroom

2.13m x 1.76m (7' 0" x 5' 9")

UPVC double glazed obscured window, tiles to floor and walls, radiator, bathroom comprises of three piece suite, Bath with shower over, hand wash basin and low level W/C.

Stairs & Landing

Carpet to floor, doors to three bedrooms, loft access with boarded loft.

First Floor

Bedroom One

4.63m x 3.70m (15' 2" x 12' 2")

Front aspect UPVC double glazed window, carpet to floor, ceiling light, radiator.

Bedroom Two

4.04m x 3.6m (13' 3" x 11' 10")

Rear aspect UPVC double glazed window, carpet to floor, ceiling light, radiator.

Bedroom Three

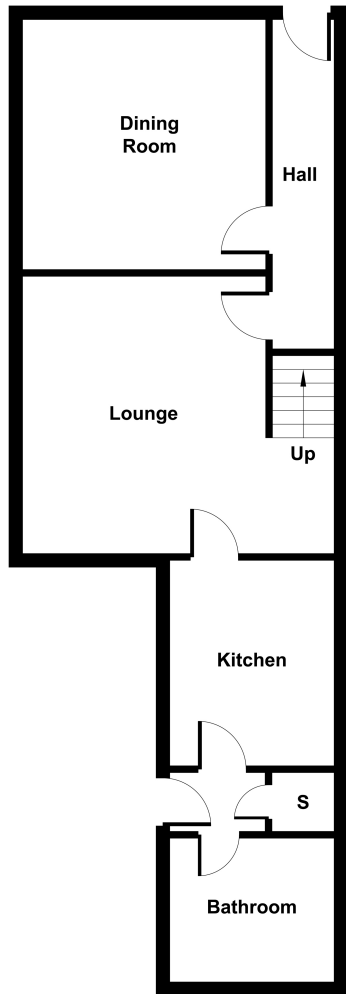
3.31m x 2.38m (10' 10" x 7' 10")

UPVC double glazed window, carpet to floor, ceiling light, radiator.

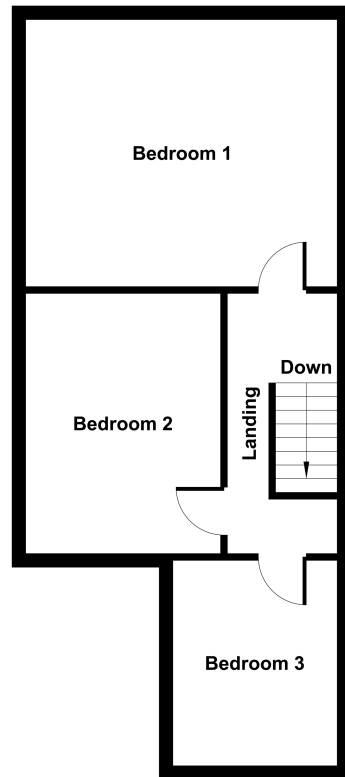
External

Rear Yard

Bound by brick walls, rear yard with gate access to the rear.



Ground Floor



First Floor



Myler & Co
77, Albert Road, Widnes, Cheshire, WA8 6JS
0151 424 5100
info@mylerestates.com