



9 Whittle Court,  
Knowlhill, Milton Keynes, MK5 8FT

Tel: 01908 231 551  
mail@elevationstateagents.com



**163 High Street, Stony Stratford, Milton  
Keynes, Buckinghamshire, MK11 1AT**

**£290,000 Freehold**

- Two bedroom
- Mid terrace house
- Victorian character property
- Highly sought after market town of Stony Stratford
- Downstairs bathroom
- Enclosed rear garden
- Good transport links
- Ideal buy to let or first time purchase
- EPC Rating



See our full selection of properties online at [www.elevationstateagents.com](http://www.elevationstateagents.com)



\*\*\*SOLD AS SEEN\*\*\*

\*\*\* TWO BEDROOM VICTORIAN HOUSE\*\*\* A stunning TWO bedroom mid terrace house located within the highly sought after market town of Stony Stratford. The property is situated on the high street within a short distance of Calverton giving that countryside feel. The property in brief comprises entrance hall, Lounge/diner, fitted kitchen, two double bedrooms and family bathroom. To the exterior there is an enclosed rear garden. Please call to arrange a highly recommended viewing as the enquiry level is already high.

Disclaimer 'Please be advised that in accordance with the Estate Agents Act 1979 the seller of the property is a connected person as defined by the Act

## GROUND FLOOR

### Entrance Hall

Doors leading to:

### Lounge Diner

### Kitchen

### Family Bathroom

Fitted to comprise three piece suite

## FIRST FLOOR

### Landing

Doors leading to:

### Bedroom One

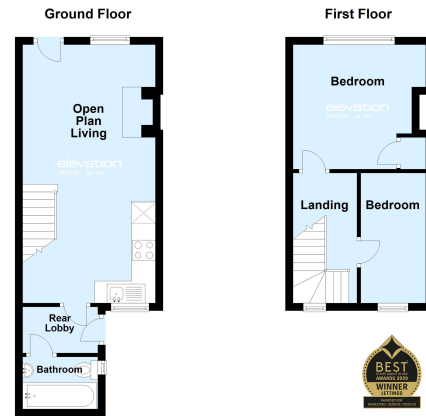
### Bedroom Two

## EXTERIOR

### Rear Garden

## Disclaimer

Whilst we have endeavoured to prepare our sales particulars accurately none of the services, appliances or equipment have been tested. A buyer should satisfy themselves on such matters prior to purchase. Any measurements or distances mentioned in these particulars are for guide reference only. If such particulars are fundamental to a purchase, buyers should rely on their own enquiries. All enquiries should be directed to Elevation Estate Agents in the first instance.



Floor plans are for layout purposes only. Measurements are approximate and subject to inaccuracies. Plan produced using PlanUp.